

WOKINGHAM METEOROLOGICAL DATA

Wokingham Climatological Station, Emmbrook, Berkshire.

Lat/Long 51°25'N 00°51'W NGR (SU)800699 Altitude 44m ASL.

Monthly Means and Totals

FEBRUARY 2005

Temperature (°C / °F)			Anomaly	Rank in past 124 years			
Mean maximum	7.3	45.1	-0.6	79 th highest			
Mean minimum	1.5	34.7	+0.2	52 nd highest			
Daily mean	4.4	39.9	-0.2	70 th highest			
Highest maximum	13.3	55.9	on 12 th	Lowest maximum	2.3	36.1	on 24 th
Highest minimum	8.0	46.4	on 10 th	Lowest minimum	-6.9	19.6	on 28 th
Mean grass minimum	-1.4	29.5		Lowest grass minimum	-11.4	11.5	on 28 th
Mean earth @30 cm	6.2	43.2	+1.1	Earth @100 cm	7.8	46.0	+1.1
Frost duration (hrs)	61.2			Rain duration (hrs)	24.0	*	
Rainfall total (mm / in)	14.8	0.58	36 %	21 st lowest			
Highest daily fall	3.7	0.15	on 10 th				
Number of: Dry days (<0.2mm)	15	Wet days (>0.9mm)	6	days ≥5mm	0		
Sunshine total (hrs)	57.6	Daily mean	2.06	86 %	Sunniest day	7.6	on 19 th
N° days with: Air frost	10	Ground frost	21	Snow falling	10	Snow lying	2
Thunder	0	Hail ≥5mm	0	Small hail/ice	3	Fog @09	1
						Nil sun	7
Air pressure MSL : Mean @09 GMT (mbar/in)	1022.2		+5.5	30.19			
Absolute highest		1037.5		30.64		on 2 nd	
Absolute lowest		1003.2		29.62		on 12 th	

Anomaly = departure from 1971 to 2000 average (degrees C, percent and mbar).

* 4 missing days due to snow/ice in gauge

Notes: **Dry and Dull with Below Normal Temperature.**

Temperature. This is the coldest February since 1996, despite near or above normal temperatures up to the 19th, and a 3 day mild spell around the 11th, the cooler weather settling in on the 20th. The mean maximum is also lowest since 1996, but the mean minimum is only lowest since 2003, with only one very cold night, the 28th. The highest maximum is lowest since 2001 but is 0.3° above the long-term median. The lowest minimum, -6.9°, is lowest since 1991 and is 1.8° below the median. Both the lowest maximum and highest minimum are close to their medians. The mean grass minimum is close to average, but the lowest value, -11.4° on the 28th, is lowest since 1996. Earth temperatures did not have time to react much to the cold spell, and at both 30 cm and 1 metre depth are about 1° above normal. The number of hours with air frost is 37 fewer than average. The number of days with ground frost is most since 1996 and 4 more than average.

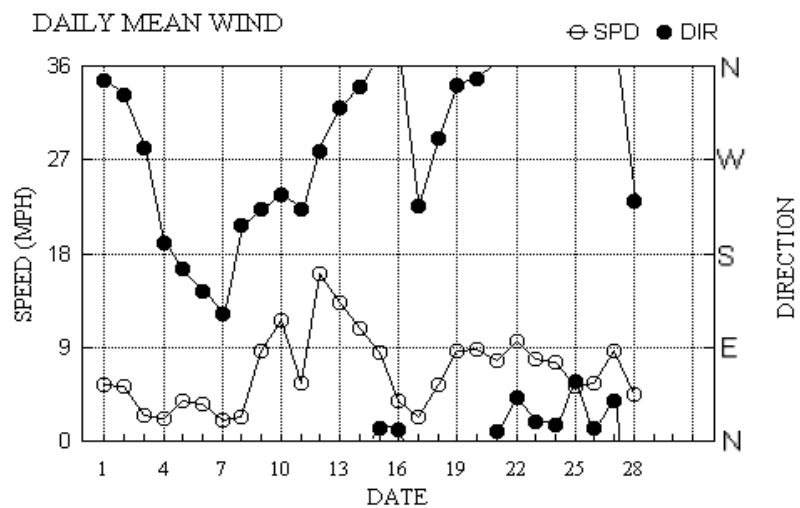
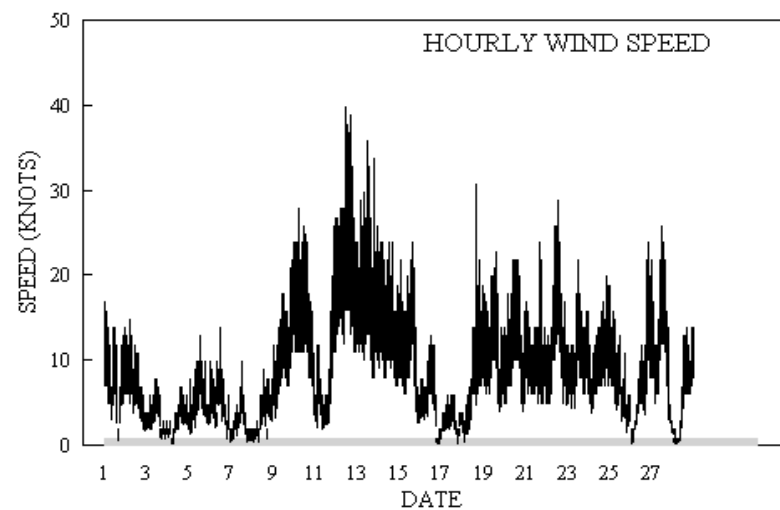
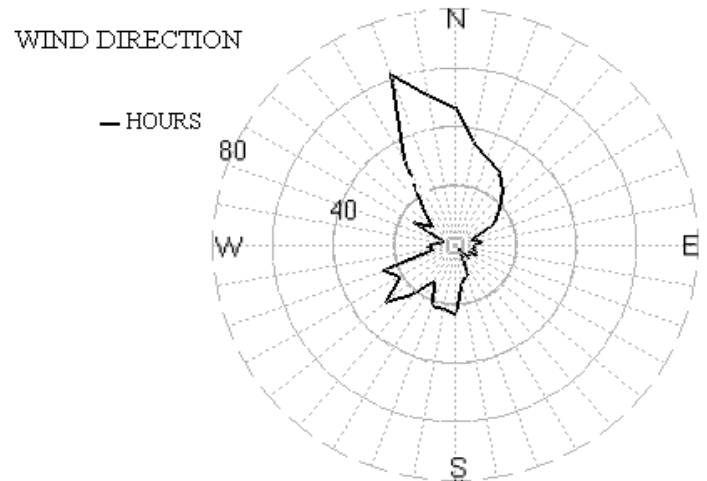
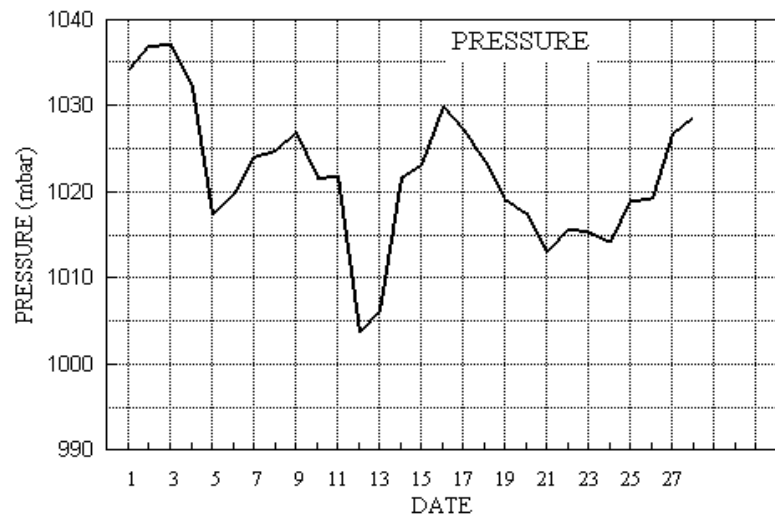
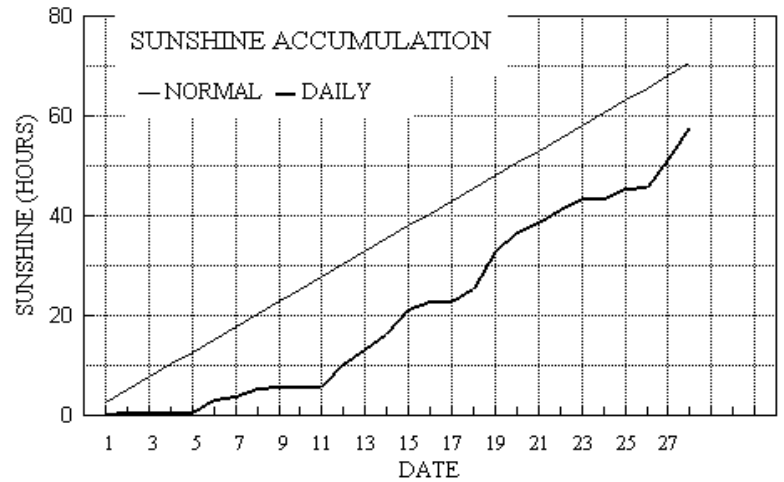
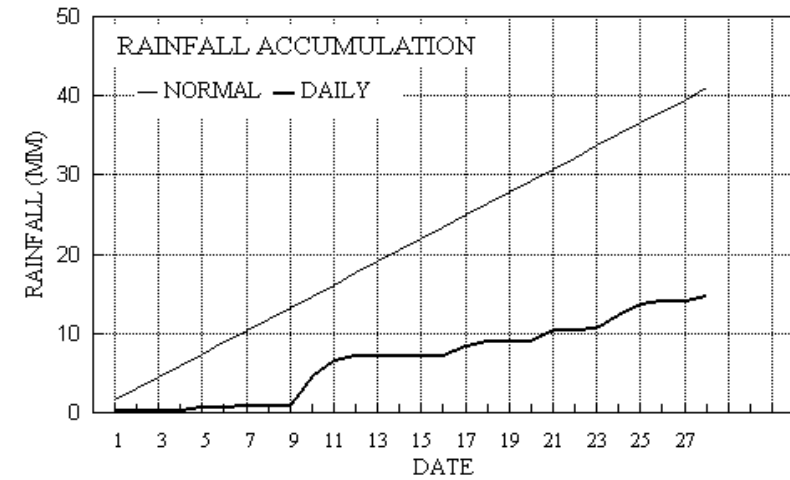
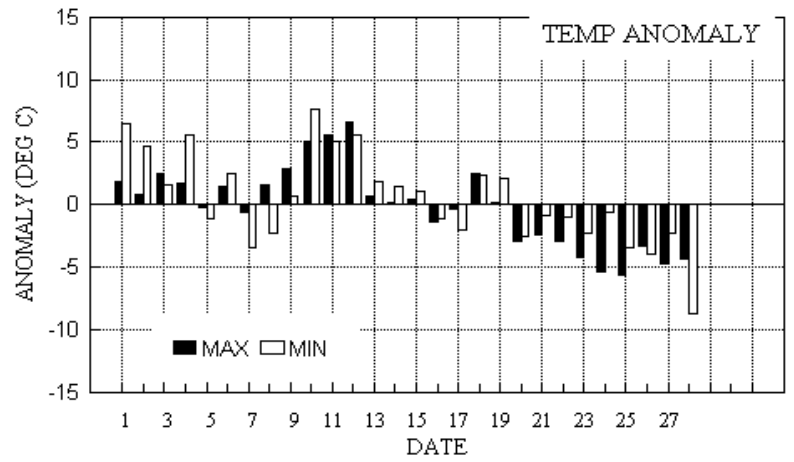
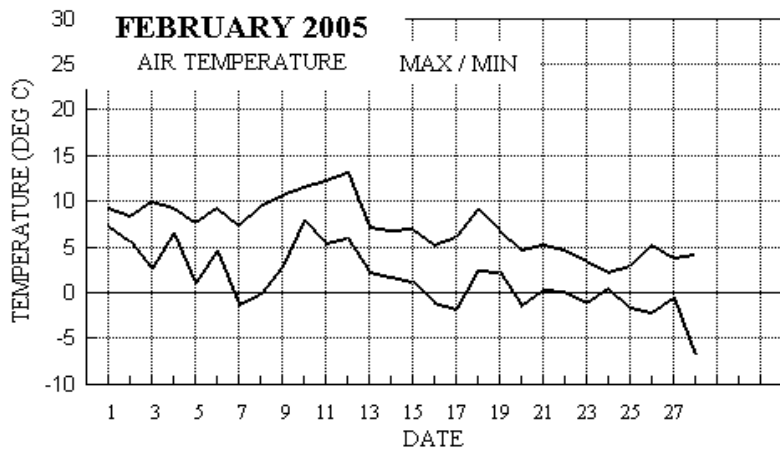
Rainfall. A dry month overall, although with only an average number of dry days. The total of 14.8 mm is lowest since 1998, while the 3.7 mm on the month's wettest day is 10th lowest in 102 years. Snow fell every day from the 21st onwards, as well as on the 13th and 15th, but amounts were never very large, and it mostly thawed as it fell. However, the number of days with snow falling is equal highest with 1991 since 1986. Snow lying at 0900 hours was recorded on the 22nd, 1 cm depth, and the 25th, also 1 cm. Small hail fell on the 13th and 15th, and snow pellets on the 25th.

Sunshine. Near of slightly above normal for part of the month after a very dull first 11 days, the resulting overall deficit amounting to about 13 hours. The monthly total is lowest since 1993 (though the instrument used is now different). There were 20 days with <3 hours and 2 with =>6 hours. **Wind.** The mean wind speed this month was 6.7 mph, 1.7 mph below average, but only lowest since 2003. The 12th was the windiest day, mean 16.1 mph, with the month's highest gust of 46 mph also on that day. The least windy day was the 7th, mean 2.0 mph, and there were 24 hours with a mean speed of 0.5 mph or less. Daily mean direction/number of days: N,10 NE,3 E,0 SE,2 S,2 SW,6 W,3 NW,2. **Humidity.** The mean relative humidity was 82.1 %, and the lowest value recorded was 37 % on the 27th. The mean amount of water vapour per kg of air was 4.4 g at both 0900 and 1500 GMT.

Pressure. The mean pressure at 0900 GMT is highest since 1998. **Commentary. From the 1st to the 10th:** Temperatures normal or above gave 10 day anomalies of +1.7° and +2.2° for max and min resp. The minimum on the 10th, the month's mildest night, had an anomaly of +7.6°. 6 dry days and a 10 day total of just 4.7 mm (32 % of normal), 3.7 mm of which fell on the 10th, the month's wettest day. Daily mean sunshine was a meagre 0.6 hours, 25 % of normal. Light winds were N'ly on 1st backing S'ly by 4th and SE'ly by 7th, veering SW'ly on 8th, increasing fresh on 9th. **From the 11th to the 20th:** Mild at first but near normal after 13th. Daily maxima had anomalies of +6.6° on the 12th, the month's mildest day, and -2.9° on the 20th at the start of the cool spell. Anomalies for minima ranged from +5.6° on the 12th to -2.6° on the 20th, with 10 day mean anomalies of +1.1° and +1.3° for max and min resp. 6 dry days again, and a similar total of 4.3 mm, 29 % of normal. The 10 day mean sunshine was 129 % of normal, lifted by 7.6 hours on the 19th, the month's sunniest day. Moderate SW'ly winds on 11th became strong W'ly on 12th and fresh N'ly by 15th, dropping light and variable on 17th, then moderate W'ly on 18th veering N'ly by 20th. **From the 21st to the 28th:** A prolonged cool spell dominated this period resulting in 8 day mean anomalies of -4.1° and -2.9° for max and min resp. , and with daily anomalies of -5.4° on the 24th, the month's coldest day, and -8.7° for the minimum on the 28th, the month's coldest night. Only 3 dry days, but the total; of 5.8 mm is only 49 % of normal, with much of the precipitation falling as snow. Although only 2 days had more than 3 hours of sunshine, the 8 day total was slightly above normal. Moderate or fresh N'ly winds became light SW'ly on 28th.

B J Burton. FRMetS. Hon. Met. Officer to Wokingham Town Council.

Wokingham Climatological Data



Daily meteorological data.

Emmbrook, WOKINGHAM, Berkshire.

Month: FEBRUARY 2005

Date	Max		Rain	Grass	30cm		100cr		Sun	Frost	pp09	Af	Sf	Th	Ic	Vec mean			Max gust			High hr			Rain
	C	C			mm	Min	C	C								hrs	hrs	mbar	Gf	Sl	Ha	Fg	ddd	ff	
1	9.4	7.4	0.3	6.7	6.8	7.8	0.1	0.0	1034.1	0	0	0	0	0	0	346	4.4	4.7	320	17	0047	340	7	00	0.6
2	8.4	5.7	0.0	4.3	7.0	7.9	0.5	0.0	1036.9	0	0	0	0	0	0	332	4.5	4.5	340	15	0541	340	7	05	0.0
3	10.1	2.6	tr	-3.7	7.0	7.9	0.0	0.0	1037.1	0	1	0	0	0	0	282	1.5	2.1	340	8	1143	330	4	11	0.0
4	9.3	6.6	0.0	5.0	7.2	8.0	0.0	0.0	1032.1	0	0	0	0	0	0	191	1.7	1.9	210	7	1632	200	3	16	0.0
5	7.8	1.0	0.4	-5.2	7.0	8.0	0.0	0.0	1017.4	0	1	0	0	0	0	166	3.1	3.3	170	13	1304	190	6	12	0.8
6	9.4	4.6	0.0	-1.1	6.9	8.0	2.5	0.4	1019.8	0	1	0	0	0	0	143	2.6	3.1	200	14	1142	190	6	11	0.0
7	7.4	-1.3	0.3	-6.8	6.6	8.0	0.5	5.0	1024.1	1	1	0	0	0	1	122	1.2	1.7	180	10	1315	180	4	13	0.3
8	9.6	-0.2	0.0	-5.4	6.3	8.0	1.9	0.0	1024.9	1	1	0	0	0	0	208	1.5	2.1	220	9	1348	230	4	13	0.0
9	10.8	2.8	0.0	-3.6	6.4	8.0	0.3	0.0	1026.9	0	1	0	0	0	0	223	7.4	7.6	230	24	2317	220	13	23	0.0
10	11.7	8.0	3.7	5.6	6.8	8.0	0.0	0.0	1021.6	0	0	0	0	0	0	237	10.0	10.1	230	28	0649	230	14	00	7.9
11	12.3	5.4	1.9	5.4	7.3	8.0	0.0	0.0	1021.9	0	0	0	0	0	0	222	2.3	4.8	240	26	2105	250	11	22	4.3
12	13.3	6.0	0.6	10.0	7.8	8.0	4.3	0.0	1003.8	0	0	0	0	0	0	279	12.3	14.0	310	40	1145	300	17	11	0.5
13	7.3	2.2	0.1	1.0	7.8	8.1	3.0	0.0	1006.1	0	0	1	0	0	1	320	9.9	11.5	350	36	1245	340	14	14	0.1
14	6.9	1.8	0.0	-2.1	7.2	8.1	3.2	0.0	1021.6	0	1	0	0	0	0	341	9.2	9.4	330	24	0452	350	12	15	0.0
15	7.0	1.3	tr	-1.4	6.7	8.1	4.8	1.8	1023.2	0	1	1	0	0	1	13	7.0	7.4	40	24	1437	40	12	14	0.1
16	5.2	-1.0	tr	-5.4	6.2	8.1	1.6	4.3	1029.8	1	1	0	0	0	0	11	3.2	3.4	20	13	1223	10	7	12	0.0
17	6.2	-1.8	1.2	-5.2	5.9	8.1	0.0	1.8	1027.3	1	1	0	0	0	0	226	1.5	2.0	210	6	1257	200	3	12	1.7
18	9.1	2.5	0.5	-1.0	6.0	8.0	2.6	0.0	1023.6	0	1	0	0	0	0	290	4.0	4.6	320	31	1647	280	9	16	0.5
19	6.8	2.3	0.0	-0.3	6.2	7.9	7.6	0.0	1019.3	0	1	0	0	0	0	342	7.4	7.5	350	23	1433	340	11	13	0.0
20	4.8	-1.4	tr	-4.0	5.9	7.9	3.7	7.8	1017.5	1	1	0	0	0	0	348	7.5	7.6	360	22	1539	350	11	12	0.0
21	5.3	0.3	1.5	-3.0	5.4	7.8	2.0	0.0	1013.0	0	1	1	0	0	0	10	6.2	6.7	40	24	1653	30	9	16	xx
22	4.8	0.2	0.1	-1.2	5.3	7.7	2.7	1.6	1015.6	0	1	1	1	0	0	42	8.2	8.4	50	29	1243	40	14	13	xx
23	3.5	-1.1	0.1	-3.7	5.0	7.6	2.2	5.7	1015.5	1	1	1	0	0	0	19	6.7	6.8	40	22	1121	30	10	11	0.8
24	2.3	0.6	1.6	-0.3	5.0	7.5	0.0	0.0	1014.2	0	1	1	0	0	0	16	5.9	6.6	60	20	2030	50	10	19	5.7
25	3.0	-1.6	1.4	-3.7	4.9	7.4	2.0	8.7	1019.1	1	1	1	1	0	1	57	4.4	4.6	60	19	0017	60	8	00	xx
26	5.3	-2.2	0.5	-6.4	4.7	7.4	0.1	5.0	1019.3	1	1	1	0	0	0	13	4.6	4.9	30	24	1905	30	11	19	0.7
27	3.9	-0.5	tr	-2.5	4.8	7.3	5.5	9.8	1026.6	1	1	1	0	0	0	39	7.1	7.5	50	26	1101	70	12	11	0.0
28	4.3	-6.9	0.6	-11.4	4.4	7.1	6.5	9.3	1028.8	1	1	1	0	0	0	230	3.7	3.9	260	14	1606	230	8	23	xx
Total			14.8					57.6	61.2																24.0
Mean	7.3	1.5		-1.4	6.2	7.8	2.06		2.2	1022.2						336	2.5	5.8							
Anom	-0.6	+0.2	36%		+1.1	+1.1	86%		+5.5																
Daily mean		4.4																							
Anom		-0.2																							

Number of days with:

Air frost = 10 Ground frost = 21 Nil sun = 7
Snow falling = 10 Snow lying = 2 Thunder = 0
Hail=>5mm = 0 Hail<5mm or ice = 3 Fog at 09GMT = 1

Note: Rain duration missing on 4 days due to snow/ice in gauge.

Abbreviations.

Max/min = highest and lowest air temperature at 1.2m in 24 hour period ending at 09 GMT

Rain = total rainfall and melted snowfall in 24 hour period ending at 09 GMT, millimetres. (Tr = trace, <.05mm).

Grass min = Lowest overnight temperature at grass tip level.

Sun = hours of bright sunshine, measured electronically. Frost = Number of hours with air temp below 0 deg C.

pp09 = Air pressure corrected to mean sea level at 0900 GMT, millibars.

Af = Air frost. Gf = Ground frost. Sf = Snow falling. Sl = Snow lying at 09 GMT.

Th = Thunder. Ha = Hail =>5mm. Ic = Hail <5mm or ice. Fg = Fog at 09 GMT.

Vec mean = 24 hour mean wind vector, ddd = direction in degrees from true north, ff = speed in knots.

Sp = 24 hour mean wind speed in knots.

Max gust = Highest gust in 24 hours, gg = speed in knots, HHhh = Time, hours and minutes, GMT.

High hr = Highest hourly mean wind, HH = hour commencing. Rain Hrs = Duration of rain, 24 hours to 09 GMT. Excludes snow/hail.

30cm and 100 cm are earth temperatures at those depths, read at 09 GMT.

Anom = Departure from 1971-2000 climatological average.

All temperatures in degrees Celsius.

Weather observations. Emmbrook, Wokingham, Berkshire.

Observations at 0900 GMT for FEBRUARY 2005

Date	VV	N	dd	ff	gg	TT	Td	Td	RH	r	PPP	a	ppp	ww	W1	W2	Nh	CI	hCr	Ch	shs	NCh	shs	NCh	shs	Date	Remarks
1	63	8	35	04	07	7.6	6.7	94	6.0	1034.1	3	020	20	5	2	8	5	3	/	/	82708	86711	88615		1		
2	78	7	31	05	08	6.4	2.8	78	4.5	1036.9	1	002	01	2	2	7	5	5	/	/	87627				2		
3	50	7	26	03	06	7.1	6.4	96	5.9	1037.1	2	002	10	2	2	7	6	2	/	/	85706	87708	87650		3		
4	50	7	18	02	04	7.2	6.8	97	6.0	1032.1	7	004	10	2	2	7	5	6	/	/	81645	87650			4	vv 20kE	
5	56	7	17	03	09	4.7	4.2	97	5.0	1017.4	5	009	10	1	1	7	5	6	/	/	83636	86656			5		
6	32	3	15	03	05	6.1	5.9	98	5.7	1019.8	3	023	10	5	1	2	5	2	3	1	81705				6	1Sc15 1Sc35 2Ac63 1Ci70	
7	01	9	10	02	05	2.9	2.9	100	4.6	1024.1	3	005	47	4	2	9	/	/	/	/					7	vv 150m	
8	11	5	12	01	03	3.8	3.6	98	4.8	1024.9	1	011	28	4	1	2	6	1	3	0	82702	84358			8	200m 8St01 @0915	
9	61	8	22	08	15	8.0	6.7	92	6.0	1026.9	3	009	01	2	2	3	5	4	2	/	81712	83656	88462		9	1Sc45	
10	78	8	25	11	22	10.8	7.5	80	6.4	1021.6	3	006	02	2	2	8	5	4	/	/	86616	88620			10		
11	56	8	06	02	04	6.0	5.8	98	5.7	1021.9	2	011	10	6	2	8	6	2	/	/	83705	87707	88710		11		
12	65	5	26	13	23	12.3	9.3	82	7.4	1003.8	1	001	15	2	2	5	8	4	0	0	82818	83635			12	1Sc25 jpNW vv 35k exp	
13	60	6	32	10	26	3.0	1.4	89	4.2	1006.1	5	004	27	8	1	5	9	4	6	1	81715	85920			13	2Ac60 /Ci70 Small hail 0832-37	
14	86	7	33	08	19	3.3	-4.2	58	2.7	1021.6	0	017	03	1	1	1	5	6	7	2	81635	85367	87072		14	1Sc50	
15	63	4	01	08	16	2.6	0.2	84	3.8	1023.2	2	017	03	1	1	3	8	4	3	1	81712				15	2Cu20 1Sc45 2Ac59 1Ci70 Cu med	
16	78	7	36	03	06	2.7	-1.5	74	3.3	1029.8	3	007	02	2	2	7	5	6	/	/	87645				16		
17	58	7	20	03	05	2.6	-1.0	76	3.5	1027.3	3	001	60	6	2	6	5	5	7	/	81625	86630	87357		17		
18	35	7	26	03	07	5.1	4.4	95	5.1	1023.6	7	006	10	2	2	5	5	6	0	1	85645	86078			18	COTRA	
19	89	1	34	08	18	3.6	-2.4	65	3.2	1019.3	3	014	01	1	1	1	8	5	0	0	81825				19	1Sc45 Cu fra	
20	88	1	35	08	18	0.5	-4.7	68	2.7	1017.5	3	004	02	0	0	1	5	5	0	0	81625				20	1Sc45 Hoar slt. Gnd sfc frzn	
21	77	8	35	06	12	1.4	-1.8	79	3.3	1013.0	6	002	02	7	2	8	5	4	/	/	82710	88613			21	Slight sn ca 06z	
22	57	7	05	11	19	1.6	-1.5	80	3.4	1015.6	3	015	22	7	2	7	5	4	/	/	85715	87650			22	Sn lyng 1cm, 70%	
23	62	6	01	06	11	1.1	-1.8	81	3.3	1015.5	3	003	70	7	2	1	8	5	3	/	81815	86357			23	1Sc45 Gnd sfc frzn Sn lyng <10%<0.5cm	
24	59	8	35	06	12	1.5	0.7	94	4.0	1014.2	6	003	68	7	6	8	5	3	/	/	82708	87711	88625		24	No lyng sn	
25	32	3	06	05	10	-0.1	-1.3	92	3.4	1019.1	2	012	71	7	1	3	5	4	0	0	81712	83650			25	Sn lyng 1cm, 90%	
26	40	7	36	04	08	2.5	2.2	98	4.4	1019.3	7	001	10	7	2	7	5	3	/	1	82708	87628			26	/Ci70 Sn lyng <10%<0.5cm	
27	84	6	04	09	17	0.7	-2.4	80	3.1	1026.6	2	026	03	1	1	6	8	4	0	0	84817	83645			27	Cu hum Tr sn lyng Gnd sfc frzn	
28	63	5	19	01	03	-1.9	-3.1	92	3.0	1028.8	8	006	03	1	1	1	5	7	0	1	81656	85078			28	COTRA Hoar mod Gnd sfc frzn	

Mean vis = 18.4 km

Mean cloud = 6.1 77%

Mean wind speed = 5.6 kn

Mean gust = 11 kn

Mean TT = 4.0 C

Mean TdTd = 1.9 C

Mean RH = 86.3 %

Mean r = 4.4 g/kg

Mean PPP = 1022.2 mbar

Weather observations. Emmbrook, Wokingham, Berkshire.

Observations at 1500 GMT for FEBRUARY 2005

Date	VV	N	dd	ff	gg	TT	Td	Td	RH	r	PPP	a	ppp	ww	W1	W2	Nh	Cl	h	Cr	Ch	shs	NChs	h	NChs	Date	Remarks
1	50	8	05	02	07	8.5	7.8	95	6.4	1035.2	4	000	51	6	5	8	5	2	/	/	82705	87710	88615			1	
2	75	7	34	05	11	8.0	4.1	76	5.0	1035.5	5	006	03	2	2	7	8	5	/	/	81824	83635	87645			2	Cu med
3	56	8	33	03	07	9.9	7.6	86	6.4	1035.7	6	009	05	2	2	8	8	4	/	/	83815	83635	88650			3	2Sc25
4	56	7	20	03	07	9.3	6.7	84	6.0	1028.0	7	026	05	2	2	7	5	6	/	/	82645	87650				4	
5	61	7	17	05	10	7.4	2.6	72	4.6	1015.2	6	016	02	2	2	7	8	5	/	/	81820	87645				5	2Sc35
6	75	7	15	03	05	9.0	3.9	70	5.0	1021.8	3	005	02	2	2	5	8	5	3	/	82823	84640				6	3Ac63 Cu med
7	50	7	15	03	06	7.1	4.3	83	5.1	1023.1	6	008	05	2	2	7	5	4	/	/	81712	87615				7	
8	57	1	22	04	08	9.3	5.6	78	5.6	1025.2	8	002	05	1	1	1	1	4	0	1	81815					8	Cu fra/Cu hum
9	80	7	24	08	16	10.1	5.9	75	5.7	1025.1	6	012	01	2	2	2	8	5	7	1	81825	83368	86075			9	2Sc35 2Ac62 COTRA Cu hum
10	58	8	25	08	24	11.0	8.8	86	7.0	1021.6	6	004	60	6	2	8	5	4	/	/	82712	86615	88618			10	
11	13	8	17	03	05	9.1	8.9	99	7.1	1018.1	7	030	51	5	5	8	7	1	/	/	82702	88703				11	
12	86	4	30	16	37	11.8	3.1	55	4.8	1007.3	1	017	25	8	1	2	8	6	7	0	82835					12	1Sc50 2Ac59 Cu med jpW
13	82	4	34	15	33	6.0	-2.1	56	3.3	1007.7	3	024	03	8	7	4	8	6	0	3	83840					13	1Sc56 1Ci70 Cb top SW
14	84	7	35	11	20	6.2	-2.3	54	3.2	1018.7	6	011	02	2	2	7	8	6	/	/	82840	87650				14	Cu hum
15	83	2	04	13	24	6.5	-5.5	42	2.5	1024.6	2	003	01	1	1	2	8	6	0	0	82840					15	1Sc56 Cu med
16	81	7	35	05	12	5.1	-4.3	51	2.7	1028.9	7	008	01	2	2	6	5	6	/	1	81630	86635				16	/Ci75
17	13	8	24	03	06	5.7	5.5	98	5.5	1025.9	6	011	51	6	5	8	7	2	/	/	83703	87707	88710			17	
18	68	8	24	05	14	8.2	5.5	83	5.6	1018.7	7	030	60	6	2	8	5	5	/	/	82620	87625	88635			18	
19	88	3	35	08	23	5.4	-4.6	48	2.7	1019.1	7	008	02	0	0	3	2	6	0	1	83840					19	1Ci75 Cu med
20	84	7	36	10	22	4.5	-1.9	63	3.3	1016.2	6	007	01	2	2	7	8	5	/	/	83825	85640				20	Cu med
21	80	5	02	06	14	4.7	-2.0	62	3.3	1010.4	7	015	15	2	2	3	9	5	6	0	81925					21	2Cu28 1Sc56 2Ac58 jp NW&E vv50k ex p
22	75	6	05	12	24	4.1	-2.9	60	3.0	1015.8	6	004	85	8	2	6	8	5	0	0	83825	84650				22	vv 40km ex p Cu med
23	60	6	03	08	16	2.8	-2.0	70	3.2	1014.9	6	004	26	8	2	6	8	5	3	0	84825	83656				23	1Ac59 Cu med jpNW, vv30k ex p
24	58	8	36	07	16	2.1	1.0	93	4.1	1011.2	6	019	68	7	6	7	7	3	2	/	83708	87711	88457			24	No lying sn
25	30	3	09	03	06	2.4	0.2	86	3.8	1019.2	8	003	01	7	1	1	8	4	7	1	81812					25	1Sc25 1Ac65 2Ci70 Cu med vv5000 exS Sn lying 2cm 10%
26	70	8	35	04	10	4.5	2.5	87	4.5	1018.5	7	005	21	6	2	8	5	4	/	/	82712	87615	88620			26	
27	86	3	05	10	19	3.3	-9.6	38	1.8	1028.2	1	002	26	8	1	3	8	6	6	0	82840					27	2Sc56 1Ac57 Cu med Extensive virga
28	73	7	23	07	13	3.4	-5.2	53	2.5	1022.4	7	034	03	2	2	5	8	6	7	/	81835	83656	87357			28	2Sc45

Mean vis = 24.2 km
 Mean cloud = 6.1 76%
 Mean wind speed = 6.8 kn
 Mean gust = 15 kn
 Mean TT = 6.6 C
 Mean TdTd = 1.5 C
 Mean RH = 71.5 %
 Mean r = 4.4 g/kg
 Mean PPP = 1021.2 mbar

VV = Visibility code (Code FM12-4377)
 N = Total cloud amount, oktas
 dd = Direction from which wind is blowing, tens of degrees true
 ff = 10 minute mean wind speed, knots
 gg = Highest gust in past hour, knots
 TT = Air temperature at 1.2 m, deg Celsius
 TdTd = Dew point temperature at 1.2 m, deg Celsius
 RH = Relative humidity at 1.2 m
 r = Humidity mixing ratio at 1.2 m, g/kg
 PPP = Air pressure reduced to sea level, mbar
 a = Characteristic of pressure tendency (Code FM12-0200)
 ppp = 3 hr pressure tendency, tenths of mbar
 ww = Present weather code (Code FM12-4677)
 W1, W2 = Past weather code (Code FM12-4561)-
 covers past 3 hours.
 Nh = Amount of low cloud present, oktas
 Cl = Type of low cloud (Code Fm12-0513)
 h = Height of low cloud (Code FM12-1600)
 Cm = Type of medium cloud (Code FM12-0515)
 Ch = Type of high cloud (Code FM12-0509)
 8 groups. 8 = indicator for cloud detail
 N = Amount of cloud, oktas
 C = Type of cloud (FM12-0500)
 hshs= Height of cloud (FM12-1677)
 Remarks : COTRA = persistent condensation
 trails present.

Wokingham Psychrometer
 Daily means and extremes, 00-24 GMT
 FEBRUARY 2005

Date	Mean			Max			Min			Missing RH N > 0	Number of minutes RH in given ranges								
	TT	TT	Time	TT	Time	RH	RH	Time	RH		Time	RH	0-20	20-40	40-60	60-80	80-90	90-95	95-98
01	8.8	10.0	00:12	7.5	08:49	89.6	96.7	17:07	81.3	11:18	0	0	0	0	878	306	256	0	
02	7.0	8.6	12:36	4.9	23:58	79.3	90.1	23:54	69.0	12:40	0	0	0	753	686	1	0	0	
03	7.6	10.0	12:51	3.4	01:03	91.6	95.9	08:32	85.5	14:41	0	0	0	0	404	919	117	0	
04	7.6	9.4	15:37	4.4	23:57	89.6	95.7	01:23	78.0	16:36	0	0	0	67	544	648	181	0	
05	5.5	7.8	12:51	3.0	02:54	87.0	98.2	03:25	65.3	13:48	0	0	0	327	492	274	346	1	
06	6.3	9.4	15:32	0.9	23:58	86.2	98.4	07:25	68.9	15:37	0	0	0	461	313	247	364	55	
07	3.3	7.4	15:50	-0.2	01:30	93.7	100.0	22:46	81.7	15:45	0	0	0	0	253	416	596	175	
08	5.1	9.5	14:56	1.3	00:00	93.8	100.0	10:30	76.6	15:08	0	0	0	86	279	154	514	407	
09	8.5	10.5	15:06	6.1	00:00	85.9	97.1	00:09	73.0	15:07	0	0	0	388	465	247	340	0	
10	10.1	11.7	12:24	9.3	00:50	87.2	97.7	23:58	78.6	12:20	0	0	0	81	877	132	350	0	
11	8.8	12.0	23:56	5.5	06:27	97.8	100.0	03:40	89.2	23:56	0	0	0	0	17	132	357	934	
12	10.4	13.3	10:23	6.0	22:12	74.9	94.8	06:21	53.7	14:53	0	0	153	690	363	234	0	0	
13	5.3	7.3	12:59	2.2	08:41	71.7	90.7	08:56	45.0	13:50	0	0	187	941	305	7	0	0	
14	4.2	6.9	11:45	2.1	06:50	58.7	71.4	00:00	47.7	13:54	0	0	730	710	0	0	0	0	
15	3.1	7.0	13:16	-0.1	23:23	72.3	87.8	07:42	41.9	14:57	0	0	301	669	470	0	0	0	
16	2.4	5.2	14:54	-0.6	23:45	68.8	81.8	23:08	48.8	15:04	0	0	291	1070	79	0	0	0	
17	3.8	6.3	18:23	-0.4	00:00	87.2	98.7	16:53	73.0	03:37	0	0	0	594	128	115	481	122	
18	6.0	9.3	12:43	2.9	07:26	85.6	98.5	04:27	66.6	12:43	0	0	0	535	336	90	364	115	
19	4.1	6.9	13:36	0.9	23:59	59.3	78.1	00:07	42.5	15:26	0	0	853	587	0	0	0	0	
20	1.6	4.8	15:03	-1.2	07:20	67.7	81.7	23:52	59.0	16:24	0	0	21	1403	16	0	0	0	
21	2.1	5.3	14:36	0.3	06:30	79.5	95.2	23:42	52.0	15:55	0	0	73	533	691	132	11	0	
22	1.4	4.8	14:16	-0.4	22:22	82.9	97.0	02:19	53.5	12:30	0	0	67	467	331	310	231	34	
23	1.2	3.5	12:07	-1.3	03:34	79.2	89.0	23:59	55.8	12:49	0	0	42	429	969	0	0	0	
24	1.3	2.5	13:37	0.1	21:46	91.0	95.8	18:10	83.7	22:05	0	0	0	0	572	842	26	0	
25	0.4	3.0	15:43	-1.8	07:14	88.7	99.4	07:08	71.3	16:15	66	0	0	0	164	538	417	102	153
26	2.2	5.3	12:33	-1.8	01:32	91.7	99.4	10:51	77.1	21:19	55	0	0	0	91	338	284	667	5
27	0.3	3.9	13:41	-3.9	23:58	74.9	96.2	23:47	35.4	14:53	129	0	23	334	223	416	255	60	0
28				-6.2	06:07	83.8	95.0	06:07	51.2	14:36	214	0	0	99	256	363	508	0	0
Mean	4.8	7.5		1.5		82.1	93.6		64.5			0.00	0.01	1.88	6.86	6.62	3.97	3.19	1.19
Hi	10.4	13.3		9.3		97.8	100.0		89.2	Tot	464	0	23	3151	11525	11123	6670	5363	2001
Lo	0.3	2.5		-6.2		58.7	71.4		35.4										

Note. Aspirated Psychrometer exposed near house. Winds with a component from 030 deg can produce a distorted diurnal temperature profile. Compensation for this is made in post processing, and maxima are constrained to be within 0.2C of screen values about 500m away. Minima on radiation nights can also be about 1C higher than screen values, due partly to topography. No compensation is made for this. Humidity readings are similar to screen derived values under most conditions and in most instances can be considered more accurate due to controlled aspiration. The psychrometer is of experimental design, and logs one minute average values of temp and RH.

28th, instrument fault. No data between 0900 and 1430.
 Other missing data due to wet bulb freezing/melting

WOKINGHAM METEOROLOGICAL DATA

Wokingham Climatological Station, Emmbrook, Berkshire.

Lat 51°25'N 00°51'W NGR (SU)800699 Altitude 44m ASL

Seasonal Means and Totals

WINTER 2004/2005

Temperature (°C)		Rank in the past 123 years	
Mean maximum	8.4 (+0.6)	32 nd highest	
Mean minimum	2.3 (+0.6)	26 th highest	
Daily mean	5.3 (+0.5)	32 nd highest	
Rainfall total (mm)	78.1 (47 %)	8 th lowest	
Sunshine total (hours)	185.2 (103 %)		
N° of: Dry days	54 (+10)	Wet days	20 (-11)
Days with: Air frost	25 (-4)	Ground frost	56 (+3)
Thunder	0 (-1)	Hail ≥5mm	0
		Small hail/ice	4
Air pressure MSL : Mean @09 GMT (mbar)	1021.2	Fog @09 GMT	3 (-4)
		Nil sun	24
			(+5.1)

Departure from 1971 to 2000 average shown in brackets.

Notes: **Mild.** **Very Dry.** **Sunny.**

Temperature. This winter season had a below average December and February flanking a very mild January. The resulting seasonal mean temperature, 5.3°, is 0.8° above the long-term median, and puts this past winter in the mild category. In a more recent perspective, winter 2004/5 is quite similar to each of the past 5 winters, all having mean temperatures between 5.2° and 5.6°. The highest maximum was 13.9° on the 7th January, a value exactly equal to the median. The lowest minimum, -6.9°, recorded on the last day of the season, is 0.6° above the median. The lowest maximum, 2.3° on the 24th February, is a high value, 2.6° above the median, while the highest minimum, 8.3° on the 31st December, is 1.6° below the median, lowest since 1977 and 9th lowest in 92 years. The mean grass minimum, -0.9°, is 0.3° above average, while the lowest grass minimum was -11.4° on the 28th February. Mean earth temperature at 30 cm depth was 6.7°, anomaly +1.0°, and at 1 metre depth, 8.7°, anomaly +0.7°. There were 153 hours with air frost, about 136 hours below normal. **Rainfall.** The total this winter, 78.1 mm, is just 47 % of average, lowest since 1992 and before that 1976, and ranks 8th lowest in 123 years. December was the wettest month, 42.8 mm, but this is only 66 % of average, while February with 14.8 mm, 36 % of average had the least, but January's 20.5 mm is only 34 % of average. The total duration of rainfall was 83.3 hours, under half the average for the past 11 years. The wettest day was December 18th with 13.0 mm, and this was the only day in the whole season to exceed 10 mm. The longest rainfall duration, 9.5 hours, was also on that day. The number of dry days is most since 1998, whilst the number of days with at least 1 mm is fewest since 1992. Two dry spells ended during this winter season, one of 14 days on the 12th December and one of 5 days on the 16th January. Snow fell on 3 days in January and 10 in February giving a seasonal total highest since 1996. Lying snow at 0900 hours was recorded on 2 days, 22nd and 25th February, 1 cm depth on both days. **Sunshine.** Although the sunshine total is 3 % above average, and is 14 hours above the median, it is the lowest winter season total since 1999. January was the sunniest month, mean 2.35 hours, and December the least sunny, mean 1.77 hours. However, February with a mean of 2.06 hours was relatively the poorest with only 86 % of average. The sunniest day was the 23rd January with 7.8 hours. Overall there were 64 days with <3 hours and 16 with =>6 hours. **Wind.** The mean wind speed was 7.0 mph, 1.1 mph below average and lowest since 1992. January was the windiest month, mean speed 9.1 mph. January the 7th was the windiest day, mean 19.2 mph, while the seasons highest gust of 56 mph was on January 8th. A mean speed of 0.9 mph made the 8th December the least windy day, and there were 94 hours with a mean speed of 0.5 mph or less. Daily mean direction/number of days: N,17 NE,5 E,5 SE,3 S,6 SW,36 W,10 NW,8. **Humidity.** The overall mean relative humidity was 83.9 %, and the lowest value recorded was 35 % on the 27th February. The mean amount of water vapour per kg of air was 4.8 g at 0900 and 5.0 g at 1500 hours. **Pressure.** The mean pressure this winter is highest since 1993.

December. Temperature near normal, dry, sunny, low wind speed. Most dry days since 1991. Least wind since before 1987.

January. Very mild, dry, very sunny, windy at times. Mildest since 1993. Highest maximum 6th highest since 1903. Lowest minimum highest since 1994. Lowest maximum highest since 1990. Duration of air frost lowest since 1990. Rainfall on the wettest day is 4th lowest in 102 years. Windiest since 1995. Wind speed on the windiest day highest since 1993.

February. Dry and dull with below normal temperature. Coldest since 1996. Lowest minimum lowest since 1991. Most days with ground frost since 1996. Driest since 1998. Wettest day 10th lowest in 102 years. Number of days with snow equal highest with 1991 since 1986.

Month	Mean Max	Anom	Mean Min	Anom	Rain mm	Anom	Sun hrs	Anom	Wind Mn mph	Max gust	Mean pressure	Anom
Dec	8.5	+0.2	1.9	-0.6	42.8	66 %	54.9	104 %	5.3	44	1018.9	+3.8
Jan	9.4	+1.9	3.3	+1.8	20.5	34 %	72.7	124 %	9.1	56	1022.6	+6.6
Feb	7.3	-0.6	1.5	+0.2	14.8	36 %	57.6	86 %	6.7	46	1022.2	+5.5