

WOKINGHAM METEOROLOGICAL DATA

Emmbrook, Wokingham, Berkshire. Annual Summary 2004

Temperature

	°C	°F	Anom	Rank
Mean maximum	15.3	59.5	(+0.9)	12th highest in 123 years
Mean minimum	7.1	44.8	(+0.9)	2nd highest in 123 years
Daily mean	11.2	52.2	(+0.9)	5th highest in 123 years
Highest maximum	30.7	87.3		on 8th August
Lowest maximum	3.3	37.9		on 28th February
Highest minimum	19.3	66.7		on 9th August
Lowest minimum	-6.2	20.8		on 1st March
Mean grass minimum	4.0	39.2		
Lowest grass minimum	-10.6	12.9		on 1st March
Mean 30cm earth temp.	12.1	53.8	(+0.6)	
Highest 30cm	20.7	69.3		on 9th August
Lowest 30cm	3.5	38.3		on 3rd March
Mean 100cm earth temp	12.3	54.1	(+0.6)	
Highest 100cm	18.1	64.6		on 19th August
Lowest 100cm	6.5	43.7		on 6th March
Warmest month	August, daily mean 18.7°C, 65.7°F			
Coolest month	December, daily mean 5.2°C, 41.4°F			

Table 1. Temperature category for each month. (See note 2, page 4)

Category	Month
1. Very cool	----
2. Cool	----
3. Normal	Mar, Jul, Dec
4. Warm	Jan, Feb, Apr, May, Oct, Nov
5. Very warm	Jun, Aug, Sep

Table 2. Number of days with max/min temperature in given range.

Range, deg C	Number of days		Range, deg C	Number of days	
	Max	Min		Max	Min
-10.0 to - 5.1	0	2	15.0 to 19.9	80	17
-5.0 to -0.1	0	38	20.0 to 24.9	73	0
0.0 to 4.9	6	80	25.0 to 29.9	23	0
5.0 to 9.9	82	136	30.0 to 34.9	2	0
10.0 to 14.9	100	93	35.0 to 39.9	0	0

Table 3. Monthly totals of Air Frost and Ground Frost.

	Jan	Feb	Mar	Apr	May	Jun	
Air frost	9 (-1)	10 (0)	7 (0)	1 (-3)	0 (-1)	0 (0)	
Ground frost	14 (-4)	15 (-3)	17 (0)	12 (-2)	3 (-4)	0 (-2)	
	Jul	Aug	Sep	Oct	Nov	Dec	Annual
Air frost	0 (0)	0 (0)	0 (0)	0 (-1)	3 (-3)	10 (+1)	40 (-8)
Ground frost	0 (0)	0 (0)	1 (-2)	3 (-5)	9 (-6)	18 (+2)	92 (-28)

Date of: last Spring air frost, 9th April ground frost, 23rd May
 first Autumn air frost, 14th November ground frost, 25th September
 Frost free period, air 218 days, ground 124 days.
 Annual total of air frost duration: 280.1 hours
 Frostiest month February, 89.7 hours

[Difference from 1971-2000 average in brackets]

Temperature anomaly in deg C

Rainfall.

Total	612.0 mm	24.09 inches	94 % of average	49th lowest in 123 years
Number of : Rain days	172 (+12)	Wet days	119 (+7)	Days => 5mm 45
Highest daily fall to 9am:	22.3 mm	on 9th August		
Wettest month,	October	109.2 mm	163 % of average	
Driest month,	February	23.4 mm	57 % of average	
Duration of measurable rainfall;	452.9 hours	Longest in a day;	10.8 hours on 9th August	
Highest monthly duration;	73.7 hours in October	Lowest ;	15.3 hours in September	
Number of dry spells, (5 or more consecutive dry days):		11		
Longest dry spell;	16 days, 1st to 16th June			
Total number of : Dry days,	194 (-12)	Days in dry spells,	88	

Table 4. **Rainfall category for each month. (See note 2, page 4)**

Category	Month
1. Very wet	Apr
2. Wet	Jan, Aug, Oct
3. Normal	Mar, May
4. Dry	Feb, Jun, Jul, Sep, Nov, Dec
5. Very dry	----

Table 5. **Distribution of rainfall duration.**

Hours	Days	Hours	Days	Hours	Days
0	171	6.1 to 9.0	10	18.1 to 21.0	0
0.1 to 1.0	78	9.1 to 12.0	5	21.1 to 24.0	0
1.1 to 3.0	58	12.1 to 15.0	0	Missing *	3
3.1 to 6.0	41	15.1 to 18.0	0	*Snow/ice/instrument failure	

Table 6. **Number of days with rainfall between given limits.**

Fall, mm	Days	Fall, mm	Days
0.0 to 0.1	194	10.0 to 19.9	12
0.2 to 0.9	53	20.0 to 29.9	1
1.0 to 4.9	74	30.0 to 39.9	0
5.0 to 9.9	32	> 39.9	0

Sunshine.

(Recorded on an electronic sunshine detector)

Total	1475.2 hours	Daily mean	4.03 hours	(103%)
Sunniest day	15.1 hours on 13th June			
Number of days:	Nil sun	54 =>12 hrs	18	

Weather.

Number of days with:

Snow or sleet falling;	13 (-1)		
Snow lying at 0900 GMT;	2 (-4)		
Thunder heard;	13 (-3)		
Hail;	19 (+7)	=>5mm; 4	<5mm, 15
Fog at 0900 GMT;	4 (-11)		

Air Pressure,

corrected to MSL.

Mean at 0900 GMT	1016.1 mabr (+0.1)
Absolute highest	1038.0 mbar on 1st March
Absolute lowest	976.7 mbar on 18th April

[Difference from 1971-2000 average in brackets]

Wind.

Table 7. **Summary of monthly wind speed at 10 metres.**

Month	Mean speed mph	Windiest day		Highest gust		0.5 mph or less hours
		mph	Date	mph	date/time	
January	8.3	19.0	31st	53	31/0828	7
February	7.8	16.5	3rd	47	3/1017	6
March	7.0	17.3	20th	54	20/1616	37
April	6.0	11.9	3rd & 4th	41	3/2318	46
May	4.5	9.6	4th	29	4/1717	56
June	6.6	15.5	23rd	40	23/1514	21
July	5.9	10.9	3rd	39	7/1256	27
August	5.4	8.9	19th	35	5/1507	24
September	7.1	13.9	20th	43	14/1317	30
October	6.8	14.3	21st	46	20/2332	27
November	4.6	10.4	17th	32	12/1819	44
December	5.3	13.2	23rd	44	23/0505	57
Year	6.2	19.0	31st January	54	20th March	382

Table 8. **Summary of hourly mean wind direction. Number of hours with wind from given directions, in degrees from true north, summed over 30 degree segments.**

Month	Direction												Calm
	030 NNE	060 ENE	090 E	120 ESE	150 SSE	180 S	210 SSW	240 WSW	270 W	300 WNW	330 NNW	360 N	
January	16	18	10	8	26	119	174	124	79	76	49	45	0
February	91	37	8	2	3	36	149	85	47	31	98	107	2
March	80	76	19	36	26	98	167	71	37	29	35	67	3
April	94	17	7	15	62	118	101	70	42	28	57	103	6
May	99	58	35	28	27	49	97	66	32	51	98	95	9
June	14	4	6	13	14	60	121	172	112	49	104	49	2
July	13	42	13	9	18	60	148	182	110	45	68	33	3
August	15	17	38	43	39	112	200	130	62	47	27	12	2
September	16	69	36	5	15	72	162	151	116	18	38	19	3
October	20	89	54	36	44	68	239	115	43	13	4	16	3
November	22	23	32	24	16	60	99	143	73	43	78	99	8
December	16	46	38	26	14	88	190	141	78	36	44	24	3
Year	496	496	296	245	304	940	1847	1450	831	466	700	669	44

Appendix 1.

Monthly statistics from the electronic sunshine detector. *

Note:

Month	Total hours	Highest daily, hrs/date	Number of days with:					
			Nil	0.1 to 2.9	3.0 to 5.9	6.0 to 8.9	9.0 to 11.9	=>12.0 hrs
January	66.4	8.5 on 29th	13	8	7	3	0	0
February	67.3	7.0 on 19th	6	12	7	4	0	0
March	96.5	11.8 on 30th	4	13	8	4	2	0
April	130.5	13.7 on 23rd	3	10	8	3	4	2
May	177.1	13.7 on 19th	2	8	6	6	6	3
June	206.6	15.1 on 13th	1	5	8	6	6	4
July	167.4	14.1 on 23rd	0	8	11	6	3	3
August	174.2	14.5 on 7th	1	7	10	9	2	2
September	179.4	12.7 on 4th	1	7	10	2	6	4
October	97.3	9.1 on 21st	2	15	8	5	1	0
November	57.6	8.3 on 13th	12	9	6	3	0	0
December	54.9	7.3 on 26th	9	15	4	3	0	0
Year	1475.2	15.1	54	117	93	54	30	18

Appendix 2.

Monthly categories, quick look table

Month	Temperature Category	Rainfall Category	Sunshine Category	Index	(see note 1)
January	4 Mild	2 Wet	4 Sunny	10	
February	4 Mild	4 Dry	3 Normal	11	
March	3 Normal	3 Normal	3 Normal	9	
April	4 Mild	1 Very wet	2 Dull	7	
May	4 Mild	3 Normal	3 Normal	10	
June	5 Very warm	4 Dry	3 Normal	12	
July	3 Normal	4 Dry	2 Dull	9	
August	5 Very warm	2 Wet	3 Normal	10	
September	5 Very warm	4 Dry	4 Sunny	13	
October	4 Mild	2 Wet	3 Normal	9	
November	4 Mild	4 Dry	3 Normal	11	
December	3 Normal	4 Dry	4 Sunny	11	

Note 1). Index, on scale 3 to 15 between 'worst' and 'best' months.

Note 2). Definition of categories used in Tables 1 and 4 and in Appendix 2: Category 1; the value lies within the worst 10% of ranked values for all years available. Category 2; between 10% and 30% above the worst value. Category 3; within 20% of the median value. Category 4; between 10% and 30% below the best value. Category 5; within 10% of the best value. In this context, best (worst) refer to above (below) normal temperature and sunshine, but below (above) normal rainfall. For temperature and rainfall, data since 1882 are considered, and since 1908 for sunshine.

* The method used to calculate sunshine from the electronic recorder installed in September 1999 was found to be suspect. As a result, the daily, monthly and annual values between September 1999 and December 2003 have been amended in the archived data. Where this data appears in this report, the values have been amended (for example on page 8). Full or partial amended data for Wokingham sunshine between those dates can be obtained from the author at : b.j.burton@btinternet.com

Annual Summary 2004

Appendix 3.

page 5

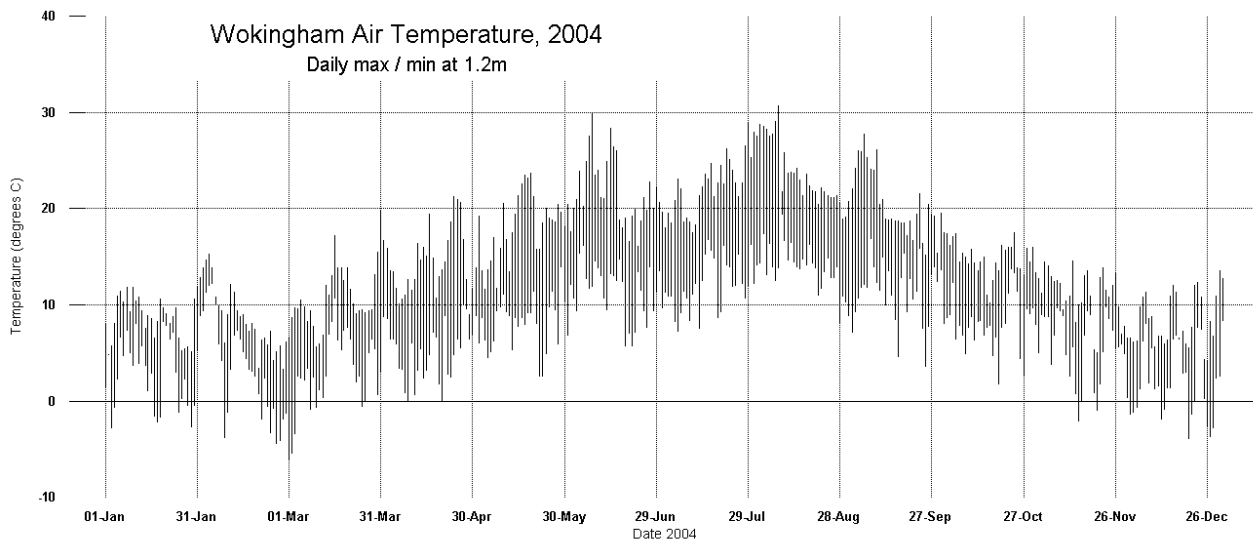
Summary of notable features in 2004.

- January.** Mild. Wet. Sunny. Lowest grass minimum highest since 1994. Snow, thunder and hail on 28th, with St Paul's church spire struck by lightning and set ablaze.
- February.** Mild and dry with below normal sunshine. 15.3° on 4th highest temperature in first 12 days of Feb in past 29 years. Highest minimum is new highest record for February. 30cm temp of 9.0° on 6th a new high record. Driest since 1998.
- March.** Temperature above normal, rainfall near normal and sunshine below normal. Min of -6.2° on 1st is lower than any value in the past winter. Mean 30cm temp. lowest since 1996, also lowest value is lowest since 1987. 2cm snow depth on 12th. Highest gust of 54 mph is highest for March since 1995.
- April.** Mild. Very wet. Dull. Lowest minimum highest since 1987. Lowest grass minimum highest in the past 25 years. Rainfall total 12th highest in 123 years.
- May.** Mild with above normal rainfall and below normal sunshine. Highest maximum lowest since 1994. Mean wind speed lowest since before 1988, as were the windiest day and highest gust.
- June.** Very warm. Dry. Near normal sunshine. Mean temperature 2nd highest since 1976 and 8th highest in 123 years. 23rd was the windiest June day since 1994
- July.** Dry. Dull. Temperature near normal. Mean earth temperature at 30cm is lowest since 1988. Driest since 1998.
- August.** Very warm but wet with below normal sunshine. Mean minimum 2nd highest in 123 years. Mean temperature 8th highest in same period. Lowest maximum 4th highest in 92 years. Highest minimum 2nd highest since 1913. Number of dry days lowest since 1992. Mean pressure lowest since 1963.
- September.** Very warm. Dry. Sunny. Windy. Mean temperature 4th highest in 123 years. Windiest since before 1988. Also a mean speed of 13.9 mph on 20th is a new record for September, but the highest gust is highest only since 1994.
- October.** Mild and wet with sunshine below normal. Mean minimum 9th highest in 123 years but mean maximum only 50th highest in the same period. Highest maximum lowest since 1982. Fewest dry days since 1981. Mean pressure lowest since 1976.
- November.** Mild. Dry. Sunshine below normal. Little wind. Mean minimum 9th highest in 123 years. Highest maximum lowest since 1987. Highest minimum lowest since 1976. Mean daily temperature range equal lowest since 1994. Driest since 1989. Highest daily fall lowest since 1956. Most days with nil sun since 1994. Mean wind speed lowest since 1988, as was the speed on the windiest day, while the highest gust is a new record low. Month's lowest pressure is highest since 1981.
- December.** Dry, sunny with near normal temperature and low wind speed. Lowest maximum highest since 1974. Number of dry days most since 1991. Mean wind speed lowest since before 1987.

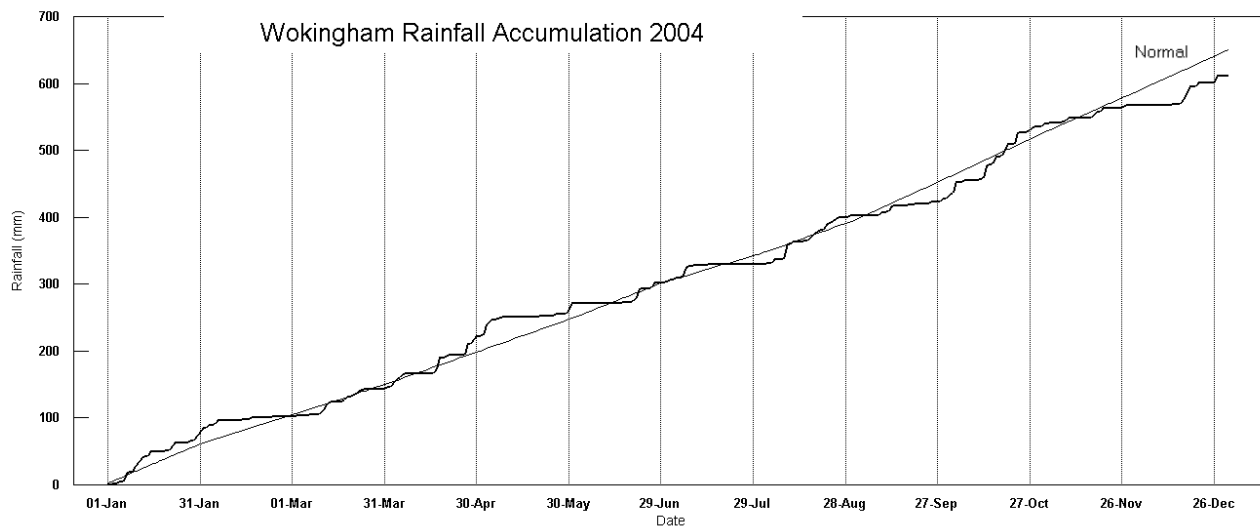
Year **Very mild with below normal Rainfall and near normal Sunshine**

Yet again we must report on a year where the mean temperature is in the top 10% of ranked values, along with 11 other of the 15 years since 1989, which had annual mean temperatures ranging from 11.0° in 2000 to 11.4° in 2002, compared with the climatological average of 10.3° (1971-2000). Prior to this phenomenally mild run of years, 1949 with 11.0° had been the mildest year on record. Values for the mean minimum are even more unprecedented. This year's 7.1° is 2nd highest in 123 years, and only 0.1° below the record set in 2002, and 14 out of the past 15 years are at the top of ranked values, 1996 being the lone exception. The mean maximum, although just within the top 10%, is 0.8° below the record set last year. The highest maximum, 30.7°, is 0.4° above the median, while the lowest minimum, -6.2°, is 1.6° above its median. The lowest maximum, 3.3°, is a new high record, exceeding the previous highest in 1998 by 0.4°. The highest minimum, 19.3°, is 4th highest in 92 years and is 0.4° below the record set in 1949. Rainfall this year is slightly below average but is only 25mm below the long-term median. The 13 days with snowfall is close to average, but 2nd highest after 2001 since 1996. 1cm lying snow was recorded on 29th Jan, and 2cm on the 12th Mar. Thunder was more frequent than in 2003, but still below average. The number of days with hail is equal highest with 1995 since 1970. Soil moisture for shallow rooted crops was sufficient until the end of May, but they would have benefited from irrigation during June and July when rainfall only just matched estimated evapotranspiration, and was definitely required between 24th July and 13th August. Moisture deficit remained high until the beginning of October. Full soil moisture deficit reached a maximum of 185mm on 8th Aug, and a second maximum of 196mm on the 27th Sep, just slightly below the 29 year average of 225mm. Sunshine total was down on recent years, and is lowest since 2000, although the daily mean this year is slightly above the estimated average for the electronic recorder. The annual mean windspeed of 6.2mph is on the low side, the 17 year average being 6.9mph. The year's highest gust of 54mph is 7mph below average. The number of hours with 0.5mph or less is exactly average. Wind directions from W and NW were around 3% more frequent this year, at the expense of NE, 3.7% less frequent, and S, 2.6% less frequent. The mean relative humidity was 80.1%, and the lowest value recorded was 27% on the 28th April. The mean amount of water vapour per kg of air was 7.1g at 0900 GMT and 6.9g at 1500 GMT. The mean air pressure is very close to average but the range between absolute highest and lowest values, 61.3 mbar, is 8.4 mbar below average. The number of days with fog at 0900 GMT is equal lowest with 1999 in the past 45 years.

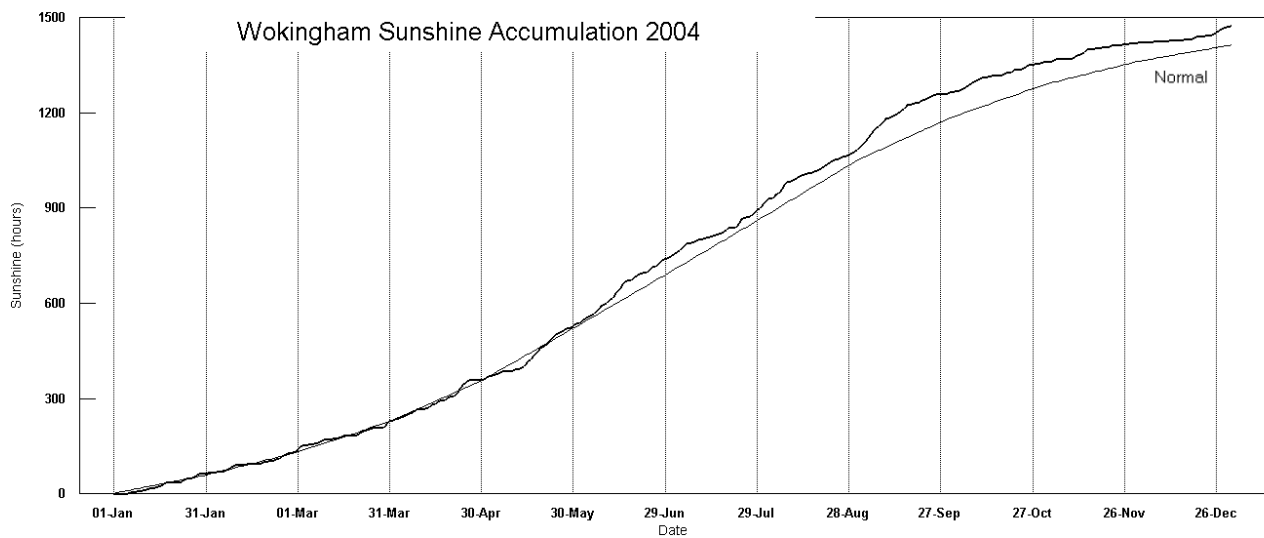
Wokingham Air Temperature, 2004 Daily max / min at 1.2m



Wokingham Rainfall Accumulation 2004

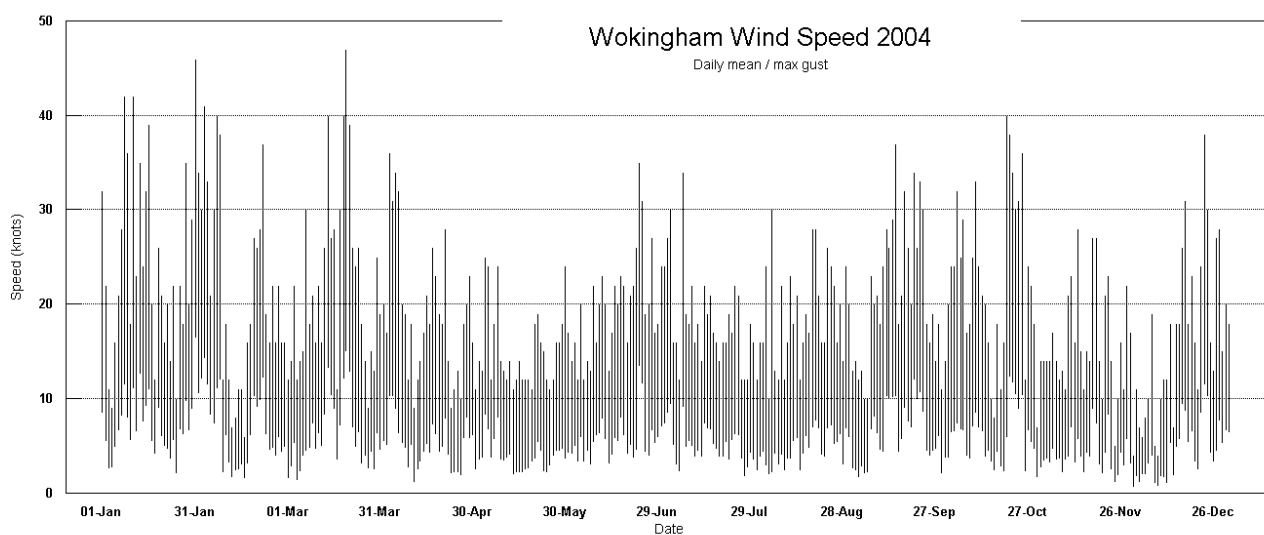


Wokingham Sunshine Accumulation 2004



Wokingham Wind Speed 2004

Daily mean / max gust



Appendix 4.

Summary of observations at 0900 GMT

Month	Monthly means								Visibility statistics						
	Vis	Cld	TT	Td	RH	WS	WG	pp	TF	FO	VP	PO	MO	GO	EX
January	20.7	75	5.5	3.7	88	6.9	14	1008.4	0	0	1	9	9	9	3
February	17.3	74	5.6	3.1	84	7.1	13	1021.6	0	0	5	6	7	11	0
March	12.9	76	6.7	4.4	86	6.8	13	1020.5	1	0	5	11	8	5	1
April	17.1	72	10.8	7.0	78	5.9	12	1013.0	0	0	2	10	8	9	1
May	20.9	69	14.0	9.3	74	4.9	10	1017.0	0	0	4	3	13	8	3
June	34.6	70	17.7	11.8	69	6.3	13	1018.0	0	0	0	2	5	14	9
July	31.6	71	17.7	12.4	71	5.6	11	1016.4	0	0	0	2	8	13	8
August	20.5	72	18.8	15.1	80	5.2	11	1010.9	0	0	1	9	7	14	0
September	23.3	60	16.1	12.1	78	7.2	14	1018.9	0	0	2	4	10	11	3
October	22.4	72	11.4	9.3	87	6.2	13	1006.9	0	0	2	5	10	11	3
November	15.4	78	7.9	6.4	91	3.6	7	1023.3	0	1	5	7	7	9	1
December	17.2	75	4.7	3.4	92	4.6	9	1018.9	2	0	8	6	5	6	4
Year	21.2	73	11.4	8.2	81	5.9	12	1016.1	3	1	35	74	97	120	36

Summary of observations at 1500 GMT

Month	Monthly means								Visibility statistics						
	Vis	Cld	TT	Td	RH	WS	WG	pp	TF	FO	VP	PO	MO	GO	EX
January	26.2	81	7.6	3.8	77	8.4	18	1008.0	0	0	1	4	7	15	4
February	24.6	81	7.7	2.3	70	7.8	16	1021.1	0	0	1	3	9	13	3
March	23.1	75	9.8	3.2	65	8.9	18	1019.1	0	0	2	6	9	10	4
April	25.6	77	13.3	5.3	61	7.6	15	1011.9	0	0	1	3	5	18	3
May	25.9	72	16.6	8.5	61	5.4	12	1016.3	0	0	0	2	12	12	5
June	37.2	78	20.2	11.4	59	7.6	17	1017.3	0	0	0	1	3	16	10
July	34.7	73	21.0	11.8	57	7.1	15	1015.5	0	0	0	1	2	22	6
August	28.9	71	21.9	14.1	63	7.3	16	1010.2	0	0	2	3	6	14	6
September	32.7	68	19.6	10.9	59	8.8	18	1017.8	0	0	0	2	3	18	7
October	26.2	72	13.7	9.1	75	7.5	17	1006.3	0	0	2	2	7	15	5
November	19.8	82	10.2	7.0	82	4.9	11	1022.1	0	0	4	5	6	12	3
December	22.2	67	7.4	4.3	81	5.7	12	1018.4	0	0	3	11	2	10	5
Year	27.3	75	14.1	7.7	68	7.2	15	1015.3	0	0	16	43	71	175	61

Legend: Vis = visibility in km. Cld = cloud amount %. TT = air temperature, deg C. Td = Dew point, deg C.
 RH = relative humidity %. WS = wind speed at 10 metres, knots. WG = Highest gust in past hour, knots.
 pp = Air pressure at MSL, mbar. TF = thick fog, <210 m. FO = fog, 210 to 900 m. VP = very poor, 1 to 4 km
 PO = poor, 4.1 to 10 km. MO = moderate, 11 to 20 km. GO = good, 21 to 40 km. EX = excellent, >40 km.

Summary of monthly climatic data.

Year 2004

Month	Max	Min	Mean	Anom	Rain	Grass	30cm	100cm	Sun	Frost	pp09	Af	Sf	Th	Ic	Rain							
	C	C	C	C	mm	min	C	C	hrs	hrs	mbar	Gf	Sl	Ha	Fg	ddd	ff	sp	hrs				
January	8.7	2.7	5.7	+1.2	79.4	0.1	6.1	7.9	66.4	52.9	1008.4	9	14	2	1	0	3	0	239	4.2	7.2	66.7	
February	8.6	3.2	5.9	+1.3	23.4	-0.3	6.7	7.9	67.3	89.7	1021.6	10	15	6	0	0	1	0	286	1.9	6.8	22.1	
March	10.7	2.8	6.7	-0.1	41.4	-0.6	6.4	7.2	96.5	46.9	1020.5	7	17	4	1	0	2	5	1	217	2.0	6.1	30.0
April	14.5	4.9	9.7	+1.1	79.4	1.4	10.2	9.3	130.5	0.6	1013.0	1	12	0	0	4	1	2	0	239	1.2	5.2	62.7
May	18.0	7.9	13.0	+1.0	49.2	4.7	14.0	12.1	177.1	0.0	1017.0	0	3	0	0	1	1	1	0	319	0.8	3.9	32.3
June	21.8	11.3	16.6	+1.6	29.8	8.4	17.1	15.1	206.6	0.0	1018.0	0	0	0	0	1	0	1	0	259	3.7	5.7	16.1
July	22.3	11.8	17.0	-0.4	28.8	9.0	17.6	16.1	167.4	0.0	1016.4	0	0	0	0	1	0	0	0	246	3.0	5.1	17.1
August	23.7	13.7	18.7	+1.6	72.7	10.9	19.3	17.8	174.2	0.0	1010.9	0	0	0	0	4	0	0	0	217	2.8	4.7	40.9
September	20.6	11.2	15.9	+1.6	24.0	8.5	16.7	17.0	179.4	0.0	1018.9	0	1	0	0	0	0	0	0	238	3.4	6.2	15.3
October	14.9	7.9	11.4	+0.6	109.2	4.5	13.0	14.6	97.3	0.0	1006.9	0	3	0	0	1	0	1	0	198	3.0	5.9	73.7
November	11.0	5.3	8.1	+1.0	31.9	2.5	10.4	12.3	57.6	19.5	1023.3	3	9	1	0	0	0	0	1	277	1.7	4.0	45.4
December	8.5	1.9	5.2	-0.2	42.8	-1.3	7.2	9.9	54.9	70.5	1018.9	10	18	0	0	0	0	1	2	236	2.7	4.6	30.6
Year	15.3	7.1	11.2	+0.9	612.0	4.0	12.1	12.3	1475.2	280.1	1016.1	40	92	13	2	3	4	15	4	241	2.3	5.4	452.9

Legend: Max/min/mean = Monthly mean of daily maximum/minimum/mean air temperature at 1.2 metres.
 Anom = Departure of mean temperature from climatic mean. Rain = monthly rainfall total.
 Grass min = Mean grass minimum temperature. 30cm/100cm = Mean earth temperature at 30 and 100 cm depth.
 Sun hrs = Hours of bright sunshine. Frost hrs = hours with air temperature below zero C. pp09 = Air pressure msl at 09 gm. t.
 Days with: Af = air frost. Gf = ground frost. Sf = snow falling. Sl = snow lying. Th = thunder. Ha = hail >5mm. Ic = small hail or ice.
 Fg = Fog at 09 gm. ddd ff = mean wind vector, degrees from true north, speed in knots. sp = mean scalar wind speed knots.
 Rain hrs = duration of measurable rain (excludes snowfall).

Appendix 5.

Wokingham annual climatic data for recent years.

Year	Mean max	Mean min	Mean	Anom	Hi max	Lo min	Rain mm	Grass min	30 cm	100 cm	Sun hrs	Frost hrs	pp09	Af	Sf Gf	Th Sl	Ic Ha Fg	ddd	ff	sp				
1993	14.3	6.3	10.3	+0.3	27.6	-5.9	667	3.5	11.5	12.0	1393	336	1017.0	47	90	12	2	18	1	6	17	229	1.8	6.5
1994	15.2	7.1	11.1	+1.1	31.1	-5.3	663	4.0	11.9	12.0	1526	219	1014.9	34	96	11	5	17	4	16	9	224	2.8	6.9
1995	15.7	6.8	11.2	+1.2	33.3	-7.9	685	3.2	12.3	12.5	1758	383	1016.3	48	98	17	4	16	3	16	8	242	1.6	6.2
1996	13.9	5.6	9.8	-0.2	30.7	-5.6	508	2.5	11.1	11.4	1621	593	1015.9	68	117	16	8	11	2	7	9	227	0.5	5.7
1997	15.6	6.7	11.2	+1.2	30.6	-8.8	523	3.8	12.0	12.1	1702	440	1016.8	54	104	9	2	14	1	9	18	218	3.0	5.3
1998	15.1	7.1	11.1	+1.1	30.1	-4.0	720	4.1	12.0	12.2	1484	212	1015.6	35	96	7	0	19	5	7	9	225	3.0	5.8
1999	15.5	7.0	11.3	+1.3	30.8	-7.5	742	3.9	12.3	12.5	1700	224	1014.7	35	101	9	4	24	8	7	4	244	2.7	5.9
2000	15.0	7.0	11.0	+1.0	30.5	-7.1	872	3.8	12.0	12.2	1348	254	1013.9	33	104	7	4	15	3	10	14	246	3.1	5.9
2001	14.9	6.5	10.7	+0.7	31.8	-6.2	746	3.5	11.8	12.1	1489	468	1015.7	63	109	20	0	21	1	12	11	242	1.6	5.4
2002	15.5	7.2	11.4	+1.1	31.0	-7.8	853	4.5	12.4	12.5	1484	166	1014.6	26	70	2	0	17	0	13	11	222	2.1	5.8
2003	16.1	6.3	11.2	+0.9	36.9	-6.5	534	3.2	12.0	12.3	1906	458	1017.2	58	121	10	4	8	1	4	7	219	1.3	5.2
2004	15.3	7.1	11.2	+0.9	30.7	-6.2	612	4.0	12.1	12.3	1475	280	1016.1	40	92	13	2	3	4	15	4	241	2.3	5.4

Legend : See appendix 4.

Wokingham area decadal annual means for the last century

Decade Ending	Mean max	Mean min	Mean	Anom	Mean rain	Anom rain	Mean sun	Anom sun
1900	14.1	5.0	9.6	-0.4	600	-60	xx	
1910	13.7	5.1	9.4	-0.6	631	-29	xx	
1920	14.0	5.3	9.7	-0.3	700	+40	1588	+61
1930	14.2	5.3	9.8	-0.2	636	-24	1599	+72
1940	14.4	5.5	10.0	0.0	641	-19	1527	0
1950	14.6	5.7	10.2	+0.2	616	-44	1572	+45
1960	14.1	5.7	9.9	-0.3	678	+18	1500	-27
1970	13.7	5.7	9.7	-0.3	686	+26	1487	-40
1980	14.0	5.8	9.9	-0.1	655	-5	1538	+11
1990	14.4	6.1	10.3	+0.3	639	-21	1554	+27
2000	14.9	6.6	10.8	+0.8	660	0	1569	+42

Anom = difference from current 1961 to 90 climatological average.
 Temperatures in degrees C, Rainfall in mm, Sunshine in hours.

Extreme values from the Wokingham climatological series.

Highest annual mean maximum	16.1	in 2003
Lowest annual mean maximum	12.4	in 1888
Highest annual mean minimum	7.2	in 2002
Lowest annual mean minimum	3.9	in 1887
Highest annual mean temperature	11.4	in 2002
Lowest annual mean temperature	8.4	in 1887
Highest recorded temperature	36.9	on 10th August 2003
Lowest recorded temperature	-15.3	on 14th January 1982
Wettest year	952 mm	in 1903
Driest year	337 mm	in 1921
Highest daily rainfall	71.6 mm	on 20th September 1980
Sunniest year	1906 hours	in 2003
Dullest year	1274 hours	in 1958
Most days with snow falling	40	in 1917
Most days with snow lying	53	in 1963

Top ten since 1882

Warmest			Coldest		Wettest		Driest		Sunniest		Dullest	
Rank	Year	Deg C	Year	Deg C	Year	mm	Year	mm	Year	Mean	Year	Mean
1	2002	11.4	1887	8.4	1903	952	1921	337	2003	5.2	1958	3.5
2	1999	11.3	1888	8.5	1951	887	1990	459	1990	5.1	1932	3.7
3	1990	11.3	1892	8.5	2000	872	1902	477	1989	5.1	1968	3.7
4	1989	11.3	1891	8.7	1960	857	1887	487	1911	5.1	1981	3.7
5	2004	11.2	1963	8.7	2002	853	1947	491	1949	5.0	1912	3.8
6	2003	11.2	1885	8.8	1916	842	1996	508	1929	5.0	1931	3.8
7	1997	11.2	1919	8.8	1974	837	1933	509	1921	5.0	1936	3.8
8	1995	11.2	1886	8.9	1915	815	1898	510	1959	4.9	1960	3.8
9	1998	11.1	1917	8.9	1927	814	1938	511	1933	4.9	1966	3.8
10	1994	11.1	1962	8.9	1968	793	1884	513	1995	4.8	1993	3.8