

WOKINGHAM METEOROLOGICAL DATA

Emmbrook, Wokingham, Berkshire. Annual Summary 2006

Temperature

	°C	°F	Anom	Rank in 125 years
Mean maximum	15.9	60.6	(+1.5)	2nd highest
Mean minimum	7.6	45.7	(+1.4)	*Highest*
Daily mean	11.7	53.1	(+1.4)	*Highest*
Highest maximum	35.8	96.4		on 19th July
Lowest maximum	-0.4	31.3		on 2nd February
Highest minimum	18.9	66.0		on 7th August
Lowest minimum	-6.7	19.9		on 4th March
Mean grass minimum	4.7	40.5		
Lowest grass minimum	-11.8	10.8		on 4th March
Mean 30cm earth temp.	12.2	54.0	(+0.7)	
Highest 30cm	21.7	71.1		on 27th July
Lowest 30cm	3.3	37.9		on 5th March
Mean 100cm earth temp	12.3	54.1	(+0.6)	
Highest 100cm	18.5	65.3		on 1st August
Lowest 100cm	6.0	42.8		on 9th March
Warmest month	July, daily mean 20.9°C, 69.6°F			
Coollest month	February, daily mean 3.9°C, 39.0°F			

Table 1. Temperature category for each month. (See note 2, page 4)

Category	Month
1. Very cool	-----
2. Cool	-----
3. Normal	Jan, Feb, Mar
4. Warm	Apr, May, Aug
5. Very warm	Jun, Jul, Sep, Oct, Nov, Dec

Table 2. Number of days with max/min temperature in given range.

Range, deg C	Number of days		Range, deg C	Number of days	
	Max	Min		Max	Min
-10.0 to -5.1	0	2	15.0 to 19.9	69	32
-5.0 to -0.1	1	43	20.0 to 24.9	81	0
0.0 to 4.9	18	74	25.0 to 29.9	29	0
5.0 to 9.9	67	102	30.0 to 34.9	10	0
10.0 to 14.9	89	112	35.0 to 39.9	1	0

Table 3. Monthly totals of Air Frost and Ground Frost.

	Jan	Feb	Mar	Apr	May	Jun	
Air frost	12 (+2)	8 (-2)	10 (+3)	4 (0)	0 (-1)	0 (0)	
Ground frost	14 (-5)	17 (-1)	15 (-2)	10 (-4)	1 (-6)	1 (-1)	
	Jul	Aug	Sep	Oct	Nov	Dec	Annual
Air frost	0 (0)	0 (0)	0 (0)	0 (-1)	5 (-1)	6 (-3)	45 (-3)
Ground frost	0 (0)	0 (0)	0 (-3)	0 (-8)	15 (0)	9 (-7)	82 (-38)

Date of: last Spring air frost, 11th April ground frost, 1st June
 first Autumn air frost, 2nd November ground frost, 1st November
 Frost free period, air 205 days, ground 152 days.
 Annual total of air frost duration: 376.9 hours
 Frostiest month February, 89.8 hours

[Difference from 1971-2000 average in brackets]

Temperature anomaly in deg C

Rainfall.

Total 664.9 mm 26.18 inches 102 % of average 49th highest in 125 years

Number of : Rain days 162 (+3) Wet days 112 (0) Days => 5mm 47

Highest daily fall to 9am: 24.9 mm on 11th October

Wettest month, November 112.0 mm 183 % of average
 Driest month, June 9.3 mm 17 % of average

Duration of measurable rainfall; 458.5 hours Longest in a day; 11.3 hours on 8th January
 Highest monthly duration; 59.3 hours in November Lowest ; 10.2 hours in June

Number of dry spells, (5 or more consecutive dry days): 14
 Longest dry spell; 12 days, 29th October to 9th November
 Total number of : Dry days, 203 (-3) Days in dry spells, 109

Table 4. **Rainfall category for each month. (See note 2, page 4)**

Category	Month
1. Very wet	-----
2. Wet	May, Oct, Nov, Dec
3. Normal	Feb, Mar, Sep
4. Dry	Jan, Apr, Jul, Aug
5. Very dry	Jun

Table 5. **Distribution of rainfall duration.**

Hours	Days	Hours	Days	Hours	Days
0	181	6.1 to 9.0	19	18.1 to 21.0	0
0.1 to 1.0	74	9.1 to 12.0	5	21.1 to 24.0	0
1.1 to 3.0	55	12.1 to 15.0	0	Missing *	0
3.1 to 6.0	31	15.1 to 18.0	0	*Snow/ice/instrument failure	

Table 6. **Number of days with rainfall between given limits.**

Fall, mm	Days	Fall, mm	Days
0.0 to 0.1	203	10.0 to 19.9	17
0.2 to 0.9	50	20.0 to 29.9	2
1.0 to 4.9	65	30.0 to 39.9	0
5.0 to 9.9	28	> 39.9	0

Sunshine.

(Recorded on an electronic sunshine detector)

Total 1648.0 hours Daily mean 4.52 hours (116%)

Sunniest day 15.5 hours on 9th June
 Number of days: Nil sun 49 =>12 hrs 30

Weather.

Number of days with:

Snow or sleet falling; 17 (+3)
 Snow lying at 0900 GMT; 1 (-5)
 Thunder heard; 20 (+4)
 Hail; 16 (+4) =>5mm; 4 <5mm, 12
 Fog at 0900 GMT; 10 (-5)

Air Pressure,

corrected to MSL.

Mean at 0900 GMT 1016.0 mabr (0.0)
 Absolute highest 1045.3 mbar on 22nd December
 Absolute lowest 978.9 mbar on 23rd November

[Difference from 1971-2000 average in brackets]

Wind.**Table 7. Summary of monthly wind speed at 10 metres.**

Month	Mean speed mph	Windiest day		Highest gust		0.5 mph or less hours
		mph	Date	mph	date/time	
January	5.9	11.7	10th	38	11/0520	10.7
February	7.4	15.0	25th	44	20/0827	11.2
March	8.9	17.3	27th	46	27/1557	3.0
April	6.8	12.0	13th	44	2/1549	6.6
May	6.7	13.7	19th	41	19/1056	12.1
June	5.0	10.8	21st	35	20/1921	20.1
July	5.6	11.4	9th	35	31/1953	14.1
August	6.2	9.9	12th	37	29/1443	10.2
September	5.8	12.3	3rd	43	2/1422	11.3
October	6.2	11.1	6th	35	31/1003	10.3
November	6.6	11.4	13th	40	23/0632	16.0
December	8.5	15.7	7th	51	7/1020	6.9
Year	6.7	17.3	27th March	51	7th Decmbr	132.5

Table 8. Summary of hourly mean wind direction. Number of hours with wind from given directions, in degrees from true north, summed over 30 degree segments.

Month	Direction												Calm
	030 NNE	060 ENE	090 E	120 ESE	150 SSE	180 S	210 SSW	240 WSW	270 W	300 WNW	330 NNW	360 N	
January	152	149	17	22	37	88	84	81	32	31	25	26	0
February	105	94	6	4	4	21	82	123	59	42	49	83	0
March	52	165	20	33	36	59	127	151	32	35	23	11	0
April	70	45	8	4	6	21	134	196	90	41	28	77	0
May	37	43	10	17	32	73	154	185	78	38	34	43	0
June	99	70	35	41	34	35	153	89	45	25	43	51	0
July	72	113	42	27	11	41	196	144	51	16	11	20	0
August	23	17	9	11	12	37	99	132	119	124	103	58	0
September	23	41	48	27	59	117	145	142	46	6	15	51	0
October	16	79	68	28	30	97	198	137	59	10	8	14	0
November	4	10	6	3	14	146	244	182	50	18	19	24	0
December	37	67	6	5	3	76	206	237	32	17	29	29	0
Year	690	893	275	222	278	811	1822	1799	693	403	387	487	0

Appendix 1.

Monthly statistics from the electronic sunshine detector, 2006.

Note:

Month	Total hours	Highest daily, hrs/date	Number of days with:					
			Nil	0.1 to 2.9	3.0 to 5.9	6.0 to 8.9	9.0 to 11.9	=>12.0 hrs
January	65.5	8.5 on 29th	10	10	7	4	0	0
February	67.0	9.1 on 25th	9	12	3	3	1	0
March	101.8	9.5 on 4th	5	11	6	8	1	0
April	135.6	12.8 on 5th	5	7	7	7	2	2
May	134.6	13.6 on 11th	1	12	11	3	1	3
June	252.7	15.5 on 3rd	0	6	4	5	6	9
July	302.3	15.4 on 17th	0	2	6	6	2	15
August	148.0	11.9 on 8th	0	10	12	4	5	0
September	155.6	12.6 on 8th	1	10	5	9	4	1
October	113.8	9.7 on 12th	3	11	10	5	2	0
November	113.4	9.1 on 2nd	1	14	5	9	1	0
December	57.7	7.1 on 17th	14	8	6	3	0	0
Year	1648.0	15.5	49	113	82	66	25	30

Appendix 2.

Monthly categories, quick look table, 2006.

Month	Temperature Category	Rainfall Category	Sunshine Category	Index	(see note 1)
January	3 Normal	4 Dry	4 Sunny	11	
February	3 Normal	3 Normal	3 Normal	9	
March	3 Normal	3 Normal	3 Normal	9	
April	4 Mild	4 Dry	3 Normal	11	
May	4 Warm	2 Wet	1 Very Dull	7	
June	5 Very warm	5 Very Dry	4 Sunny	14	
July	5 Very warm	4 Dry	5 Very Sunny	14	
August	4 Warm	4 Dry	1 Very Dull	9	
September	5 Very warm	3 Normal	3 Normal	11	
October	5 Very mild	2 Wet	3 Normal	10	
November	5 Very mild	2 Wet	5 Very Sunny	12	
December	5 Very mild	2 Wet	4 Sunny	11	

Note 1). Index, on scale 3 to 15 between 'worst' and 'best' months.

Note 2). Definition of categories used in Tables 1 and 4 and in Appendix 2: Category 1; the value lies within the worst 10% of ranked values for all years available. Category 2; between 10% and 30% above the worst value. Category 3; within 20% of the median value. Category 4; between 10% and 30% below the best value. Category 5; within 10% of the best value.

In this context, best (worst) refer to above (below) normal temperature and sunshine, but below (above) normal rainfall.

For temperature and rainfall, data since 1882 are considered, and since 1908 for sunshine.

Summary of notable features in 2006.

- January.** Dry and sunny with mean temperature near normal. Driest January since 2000. Lowest mean wind speed since 1997.
- February.** Temperature well below normal, rainfall well above normal and sunshine near normal. Mean maximum lowest since 1996. Highest maximum lowest since 1993 and lowest maximum lowest since 1991. Highest minimum lowest since 1986. Earth temperature at 1 m depth lowest since 1997.
- March.** Mean temperature below normal, rainfall and sunshine near normal, windy. Mean temperatures lowest since 1996. Highest maximum lowest since 1996. Lowest minimum lowest since 1986. Highest minimum is 4th highest in 94 years. Highest air frost duration since 1987. Windiest since 1995
- April.** Mild, dry, near normal sunshine. Mean maximum 45th highest but mean minimum 7th highest in past 125 years. Lowest grass min lowest since 1996.
- May.** Mild, wet and very dull. Mean min 3rd highest in 125 years, but mean max 42nd highest. Wettest since 1983. Fewest sunshine hours since 1991, and probably one of the 10 dullest Mays since 1908.
- June.** Very warm, very dry, sunny. Mean maximum highest since 1976 and 3rd highest in 125 years. Only 9.3 mm of rain, and 6th driest in 125 years. Sunniest since 1996. Period 2nd to the 10th had a mean of 12.9 hours per day. Lowest wind speed since before 1988.
- July.** Hottest month of any in past 125 years. Dry and very sunny. New record mean maximum, 0.6° above the previous highest in 1983. 35.8° recorded on 19th, a new July record, and 2nd highest for any month in the past 103 years. 30° was exceeded on 10 days. Probably the sunniest July since 1911. Period 11th to the 21st had a mean of 13.7 hours per day. Mean pressure highest since 1990.
- August.** Warm, dry and very dull. Rather like April and May, the mean max ranks 42nd highest in 125 years while the mean min ranks 9th highest. The lowest maximum is 4th highest since 1913. Remarkably little sunshine after the glut over the previous two months, lowest total since 1977 and probably 8th lowest in 99 years.
- September.** Warmest September on record, rainfall below normal and sunshine above normal. Mean temperature 1.0° above the previous highest in 1929. The highest maximum has not been exceeded since 1949. The lowest max is 3rd highest in 94 years. The highest min is 2nd highest in 94 years.
- October.** Warmest October on record in terms of the mean temperature. Wet with above normal sunshine. The lowest maximum is also a new record high for the month in the past 94 years. The lowest minimum is 2nd highest in 103 years. Earth temperatures at both 30cm and 1m depth are at record high levels. Wettest since 2000.
- November.** Very mild, wet and very sunny. The mean maximum is 3rd highest in 125 years. The lowest maximum is 2nd highest in 94 years. Although over 100 mm of rain fell, it is only wettest since 2003. Probably the sunniest November in 99 years.
- December.** Very mild, wet and sunny. The 9th consecutive month in the mild or very mild category. Mean temperature highest since 1988. The lowest minimum is also highest since 1988. A phenomenal rain rate of 227 mm/hr was recorded on the 30th during what was probably a tornadic storm. Mean wind speed highest since 1999. The maximum pressure is probably highest since 1970.

Year**New record high temperature, Rainfall above normal, Sunny.**

This is the warmest year on record, with the mean temperature 0.3° higher than any other in the past 125 years. The mean minimum is also a new record, 0.4° above the previous highest in 2002. The mean maximum, however, failed to top the 2001 value, and is in 2nd place. The current climatic warming trend is much in evidence, as the 13 warmest years since 1882 have all occurred in the past 18 years. New record highs were also set this year for monthly mean temperature in July, September and October.

The highest maximum, 35.8°, is the second highest temperature on record, 1.1° below the record set in 2003.

Conversely, the lowest maximum, -0.4°, is lowest since 1997, and is only 0.1° above the median. The highest minimum, 18.9°, is 1.8° above the median but 0.8° below the record. The lowest minimum, -6.7°, is 1.1° above the median but 2.7° below the record. The mean grass minimum, 4.7°, is highest in the past 27 years. Extreme monthly mean temperature anomalies were +3.7° in September and -1.0° in March

Rainfall. The total this year is 26.5 mm above the 125 year median value, making it the wettest year since 2002. The highest 24 hour total, 24.9 mm, is 6.7 mm below the median. Although the rainfall total is above average, the duration of measurable rain is 63 hours below average. The number of dry days is near average while the number of days with 10 or more mm is 3 more than average, and most since 2002. At 20 days, thunder was more frequent than the average of 16, and most since 2001.

Hail days were also 4 more than average. Soil moisture was good until the end of May, the deficit then increasing, with watering required for shallow rooted crops through July, August and much of September. The maximum estimated soil moisture deficit was 242 mm in mid September, the highest value since 2003, but only 20 mm more than average. The accumulated rainfall shows a loss of 139 mm in the 24 months to the end of the year, but a gain of 17 mm on the same time last year.

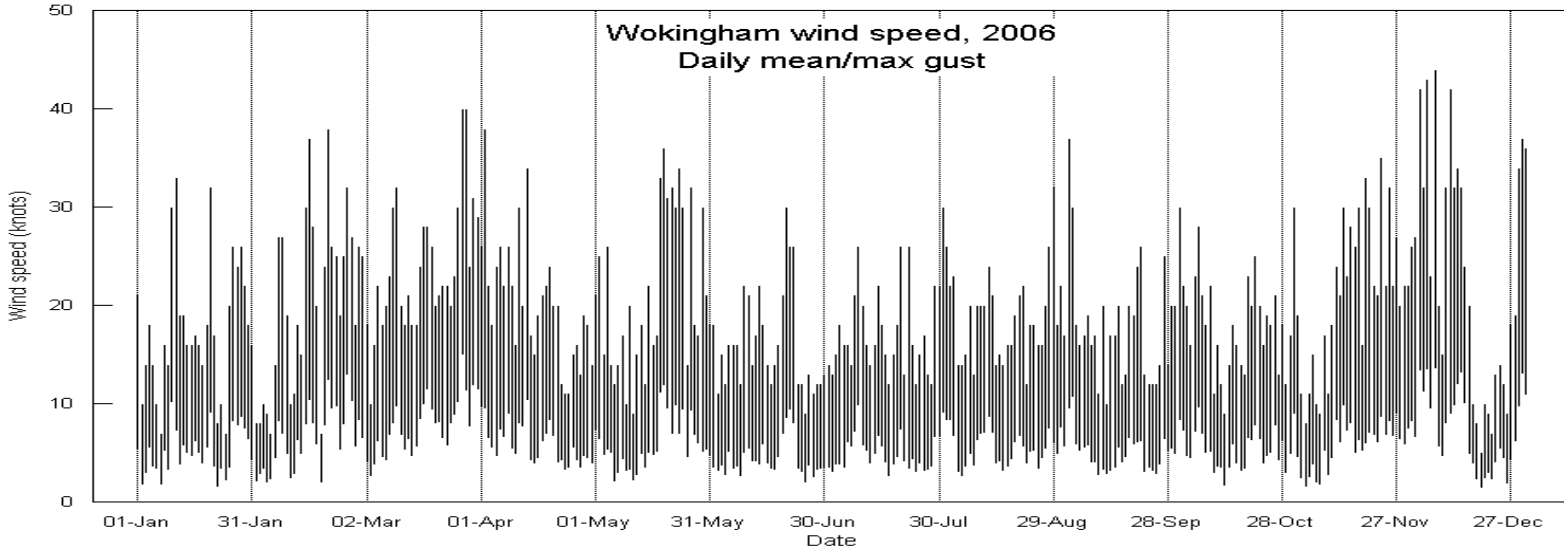
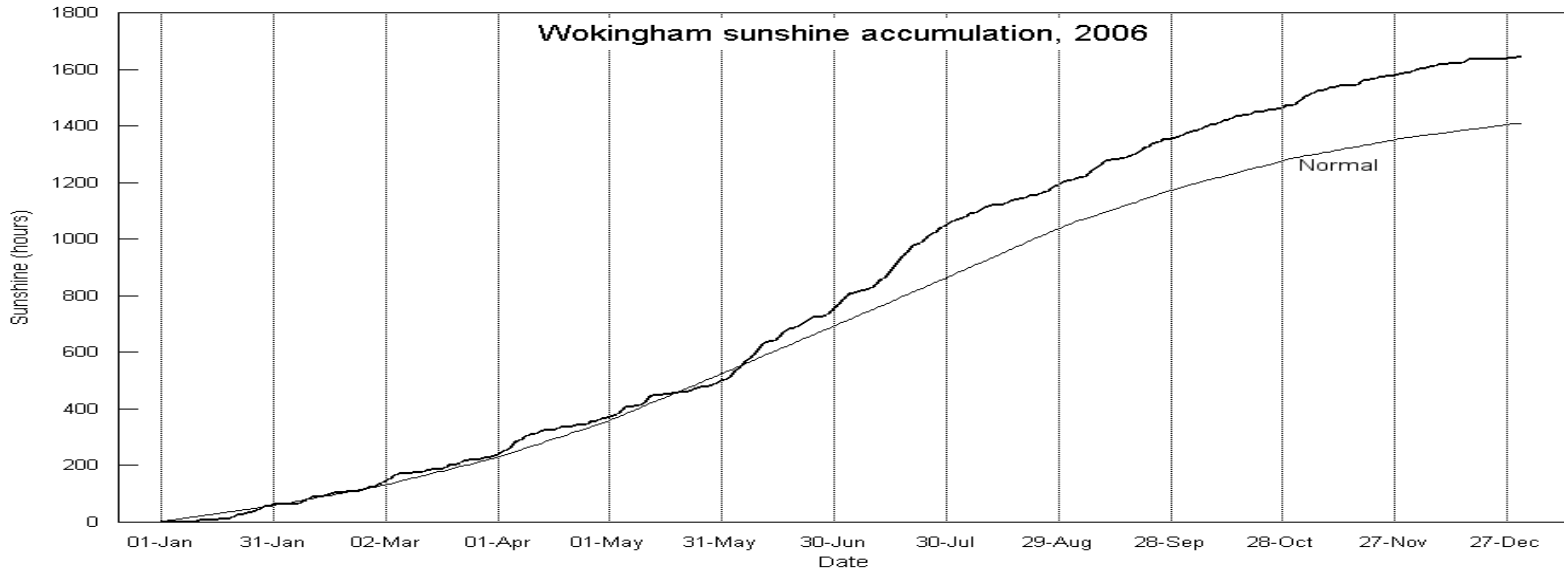
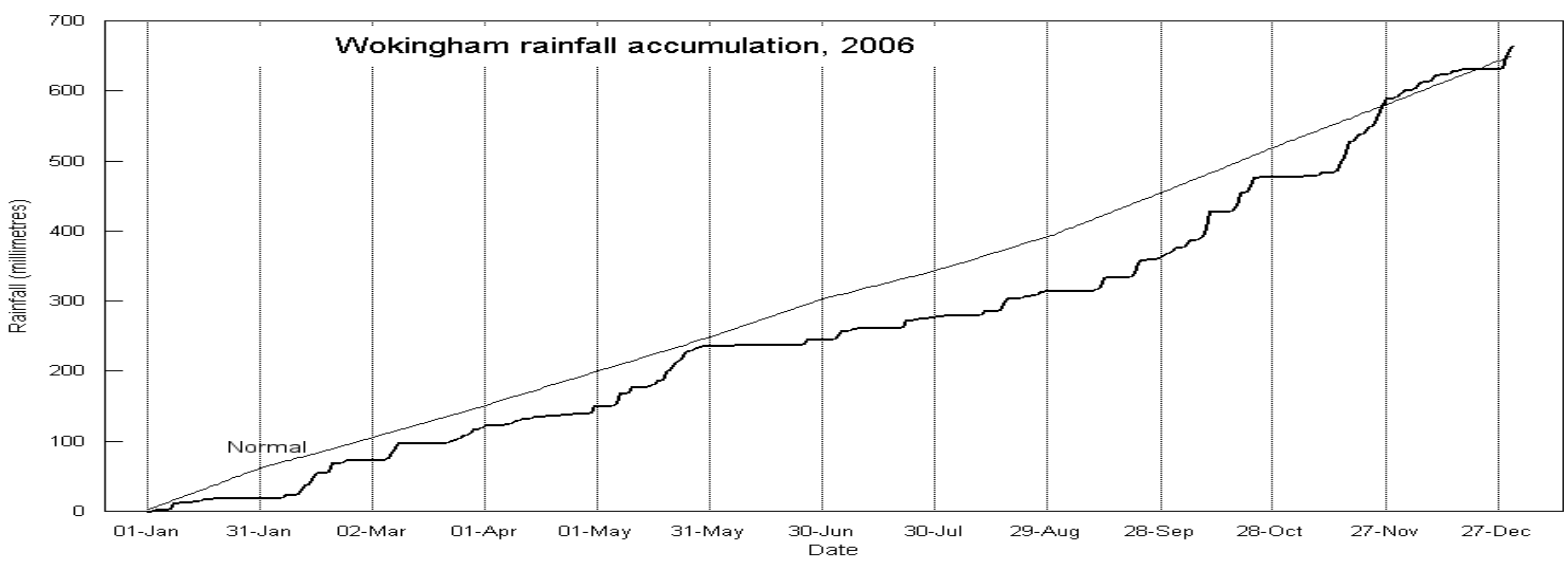
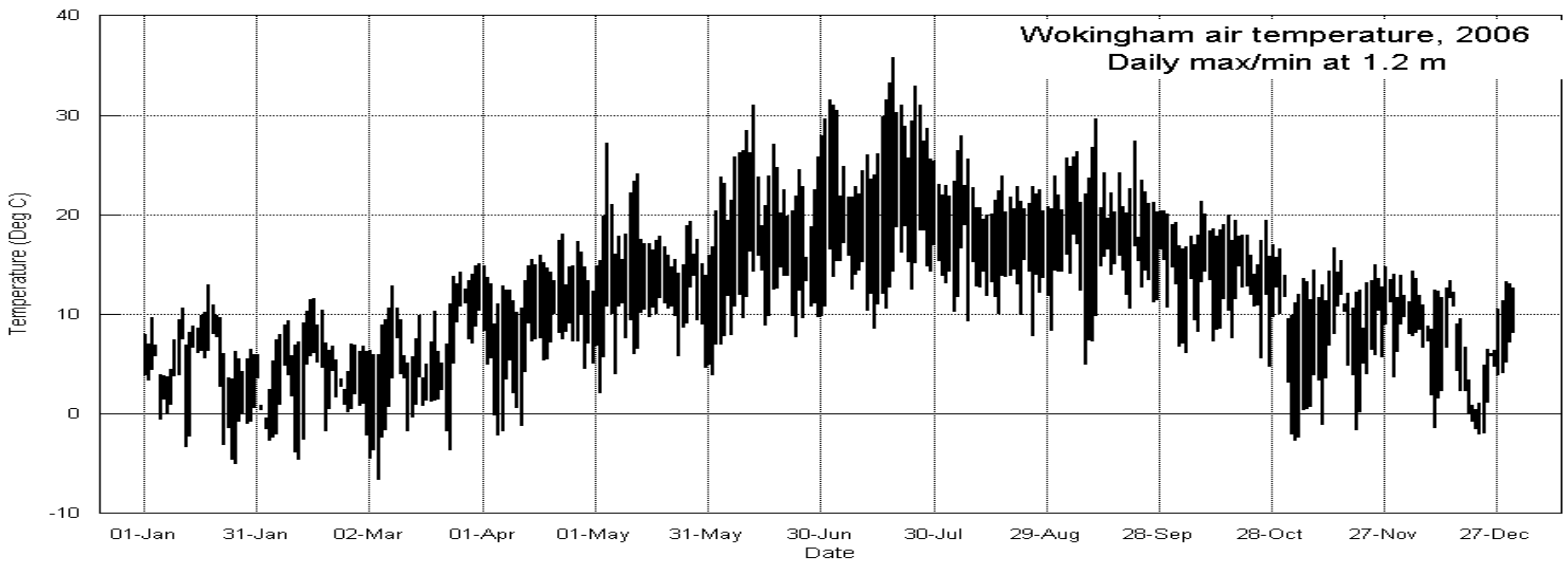
There is little evidence in the local figures of a lack of rainfall sufficient to account for the apparent water shortage.

Compared with the last major dry period which peaked in March 1998, we have had 425 mm more rain than normal in the intervening 105 months, which is equivalent to 65 % of the average annual fall.

Snow fell in January, February, March and April, but only lay on one day, 24th Feb, and then only partial cover at 0.5 cm depth. Large hail fell on 7th April, 10th May, 29th May and 25th November, the largest stones 1.5 cm dia on 10th May. Sunshine was reasonable overall, 16% above average and most since 2003.

The annual mean wind speed of 6.7 mph is close to average, but highest since 2002. The year's highest gust of 51 mph is 9 mph below average, and lowest since 2003. Compared with average, SW winds were 25 % more frequent and NE winds 24 % more frequent, while E and S winds were 29 % and 26 % less frequent resp.

The overall mean relative humidity was 77.8 %, and the lowest value was 21 % on the 1st July. The mean water vapour content per kg of air was 7.2 g at 0900 GMT and 6.7 g at 1500 GMT. The mean air pressure at 09 GMT is exactly average. The total range of pressure, 66.4 mbar, is slightly below average. The highest pressure reached, 1045.3 mbar, is highest since 1992.



Appendix 4.

Summary of observations at 0900 GMT

Month	Monthly means								Visibility statistics						
	Vis	Cl	TT	Td	RH	WS	WG	pp	TF	FO	VP	PO	MO	GO	EX
January	14.6	81	4.3	2.8	90	5.4	11	1023.4	1	0	6	11	3	9	1
February	19.0	86	3.1	0.9	86	6.3	13	1016.5	2	0	5	8	4	5	4
March	23.1	76	5.6	1.7	77	8.0	17	1010.6	0	0	0	8	11	9	3
April	25.3	68	9.9	5.2	73	6.8	14	1016.0	0	1	0	5	8	12	4
May	23.6	80	13.7	9.7	78	6.1	14	1013.7	0	0	1	11	8	4	7
June	32.4	55	18.6	11.6	64	4.8	10	1021.1	0	0	0	1	9	12	8
July	28.4	56	21.7	14.9	67	5.3	11	1019.3	0	0	1	6	7	10	7
August	36.2	71	17.7	12.7	73	6.4	14	1013.3	0	0	0	1	5	16	9
September	23.0	70	17.7	14.5	82	5.3	11	1013.5	0	0	6	3	7	9	5
October	18.7	75	14.1	11.9	87	5.4	11	1010.3	1	0	6	6	5	10	3
November	22.3	65	8.1	6.0	87	5.7	11	1014.7	0	1	3	6	6	8	6
December	19.3	78	6.7	4.8	88	6.3	13	1019.8	4	0	3	9	4	7	4
Year	23.8	71	11.8	8.1	79	6.0	13	1016.0	8	2	31	75	77	111	61

Summary of observations at 1500 GMT

Month	Monthly means								Visibility statistics						
	Vis	Cl	TT	Td	RH	WS	WG	pp	TF	FO	VP	PO	MO	GO	EX
January	21.4	76	6.6	2.7	77	6.6	14	1023.1	0	0	4	5	10	9	3
February	26.9	74	6.1	0.3	69	7.7	16	1015.9	0	0	3	7	5	6	7
March	25.2	75	8.3	0.3	60	9.2	20	1009.6	0	0	0	6	9	13	3
April	29.2	75	12.7	4.3	59	8.0	17	1015.0	0	0	0	5	3	17	5
May	28.7	79	16.7	8.8	62	8.0	18	1013.4	0	0	0	1	8	18	4
June	34.7	61	22.0	9.8	48	5.6	13	1020.2	0	0	0	1	4	16	9
July	38.3	58	26.4	12.6	46	6.3	15	1018.0	0	0	1	2	2	12	14
August	40.4	75	20.8	11.0	54	7.4	16	1012.9	0	0	1	0	1	16	13
September	41.4	64	21.7	12.2	57	7.1	16	1012.2	0	0	0	3	1	12	14
October	28.7	73	16.4	11.4	73	7.2	14	1009.2	0	0	1	7	5	12	6
November	32.3	64	11.0	6.7	75	7.5	15	1014.0	0	0	2	2	6	11	9
December	22.7	78	8.1	5.5	84	7.8	16	1019.0	3	0	2	7	5	8	6
Year	30.8	71	14.8	7.2	64	7.4	16	1015.2	3	0	14	46	59	150	93

Legend: Vis = visibility in km. Cl = cloud amount %. TT = air temperature, deg C. Td = Dew point, deg C.
 RH = relative humidity %. WS = wind speed at 10 metres, knots. WG = Highest gust in past hour, knots.
 pp = Air pressure at MSL, mbar. TF = thick fog, <210 m. FO = fog, 210 to 900 m. VP = very poor, 1 to 4 km
 PO = poor, 4.1 to 10 km. MO = moderate, 11 to 20 km. GO = good, 21 to 40 km. EX = excellent, >40 km.

Summary of monthly climatic data.

Year 2006

Month	Max	Min	Mean	Anom	Rain	Grass	30cm	100cm	Sun	Frost	pp09	Af	Sf	Th	Ic	Rain							
	C	C	C	C	mm	min	C	C	hrs	hrs	mbar	Gf	Sl	Ha	Fg	ddd	ff	sp	hrs				
January	7.2	2.1	4.7	+0.2	19.8	-0.9	5.5	7.5	65.5	73.9	1023.4	12	14	4	0	0	1	1	73	0.4	5.1	36.3	
February	6.7	1.1	3.9	-0.7	54.3	-0.9	5.0	6.6	67.0	89.8	1016.5	8	17	5	1	0	0	3	2	339	1.5	6.4	47.0
March	9.3	2.4	5.8	-1.0	44.7	-0.7	5.7	6.5	101.8	87.5	1010.6	10	15	6	0	1	0	4	0	210	1.4	7.7	47.8
April	13.9	5.4	9.6	+1.0	31.6	1.4	9.7	8.8	135.6	12.9	1016.0	4	10	2	0	0	1	1	1	258	3.1	5.9	37.3
May	17.7	8.8	13.2	+1.2	86.7	5.8	13.8	11.8	134.6	0.0	1013.7	0	1	0	0	3	2	1	0	233	3.6	5.8	56.5
June	23.1	11.0	17.0	+2.0	9.3	7.8	17.4	14.9	252.7	0.0	1021.1	0	1	0	0	1	0	0	0	236	1.0	4.3	10.2
July	27.5	14.4	20.9	+3.5	33.3	11.3	19.9	17.2	302.3	0.0	1019.3	0	0	0	0	4	0	0	0	213	1.7	4.9	18.0
August	22.1	12.9	17.5	+0.4	35.2	10.2	18.6	17.9	148.0	0.0	1013.3	0	0	0	0	2	0	0	0	279	3.3	5.4	17.7
September	22.6	13.4	18.0	+3.7	53.1	10.0	17.8	17.3	155.6	0.0	1013.5	0	0	0	0	4	0	0	0	213	2.5	5.0	29.3
October	17.6	10.5	14.1	+3.3	111.0	7.2	14.8	15.7	113.8	0.0	1010.3	0	0	0	0	2	0	0	1	212	3.0	5.4	44.1
November	12.7	4.3	8.5	+1.4	112.0	1.7	9.7	12.1	113.4	41.4	1014.7	5	15	0	0	2	1	1	1	218	4.6	5.7	59.3
December	9.6	4.5	7.0	+1.6	73.9	3.0	8.1	10.7	57.7	71.4	1019.8	6	9	0	0	1	0	1	4	222	5.5	7.4	55.0
Year	15.9	7.6	11.7	+1.4	664.9	4.7	12.2	12.3	1648.0	376.9	1016.0	45	82	17	1	20	4	12	10	232	2.2	5.8	458.5

Legend: Max/min/mean = Monthly mean of daily maximum/minimum/mean air temperature at 1.2 metres.
 Anom = Departure of mean temperature from climatic mean. Rain = monthly rainfall total.
 Grass min = Mean grass minimum temperature. 30cm/100cm = Mean earth temperature at 30 and 100 cm depth.
 Sun hrs = Hours of bright sunshine. Frost hrs = hours with air temperature below zero C. pp09 = Air pressure msl at 09 gmt.
 Days with: Af = air frost. Gf = ground frost. Sf = snow falling. Sl = snow lying. Th = thunder. Ha = hail >5mm. Ic = small hail or ice.
 Fg = Fog at 09 gmt. ddd ff = mean wind vector, degrees from true north, speed in knots. sp = mean scalar wind speed knots.
 Rain hrs = duration of measurable rain (excludes snowfall).

Appendix 5.

Wokingham annual climatic data for recent years.

Year	Mean max	Mean min	Mean	Anom	Hi max	Lo min	Rain mm	Grass min	30 cm	100 cm	Sun hrs	Frost hrs	pp09	Af	Sf Gf	Th Sl	Ic Ha	Fg	ddd	ff	sp			
1995	15.7	6.8	11.2	+1.2	33.3	-7.9	685	3.2	12.3	12.5	1758	383	1016.3	48	98	17	4	16	3	16	8	242	1.6	6.2
1996	13.9	5.6	9.8	-0.2	30.7	-5.6	508	2.5	11.1	11.4	1621	593	1015.9	68	117	16	8	11	2	7	9	227	0.5	5.7
1997	15.6	6.7	11.2	+1.2	30.6	-8.8	523	3.8	12.0	12.1	1702	440	1016.8	54	104	9	2	14	1	9	18	218	3.0	5.3
1998	15.1	7.1	11.1	+1.1	30.1	-4.0	720	4.1	12.0	12.2	1484	212	1015.6	35	96	7	0	19	5	7	9	225	3.0	5.8
1999	15.5	7.0	11.3	+1.3	30.8	-7.5	742	3.9	12.3	12.5	1700	224	1014.7	35	101	9	4	24	8	7	4	244	2.7	5.9
2000	15.0	7.0	11.0	+1.0	30.5	-7.1	872	3.8	12.0	12.2	1348	254	1013.9	33	104	7	4	15	3	10	14	246	3.1	5.9
2001	14.9	6.5	10.7	+0.7	31.8	-6.2	746	3.5	11.8	12.1	1489	468	1015.7	63	109	20	0	21	1	12	11	242	1.6	5.4
2002	15.5	7.2	11.4	+1.1	31.0	-7.8	853	4.5	12.4	12.5	1484	166	1014.6	26	70	2	0	17	0	13	11	222	2.1	5.8
2003	16.1	6.3	11.2	+0.9	36.9	-6.5	534	3.2	12.0	12.3	1906	458	1017.2	58	121	10	4	8	1	4	7	219	1.3	5.2
2004	15.3	7.1	11.2	+0.9	30.7	-6.2	612	4.0	12.1	12.3	1475	280	1016.1	40	92	13	2	3	4	15	4	241	2.3	5.4
2005	15.4	6.7	11.1	+0.8	31.1	-6.9	492	3.5	12.0	12.2	1610	388	1018.0	55	115	23	4	14	2	12	10	246	1.8	5.2
2006	15.9	7.6	11.7	+1.4	35.8	-6.7	665	4.7	12.2	12.3	1648	377	1016.0	45	82	17	1	20	4	12	10	232	2.2	5.8

Legend : See appendix 4.

Wokingham area decadal annual means for the last century

Decade Ending	Mean max	Mean min	Mean	Anom	Mean rain	Anom	Mean sun	Anom
1900	14.1	5.0	9.6	-0.7	600	-51	xx	
1910	13.7	5.1	9.4	-0.9	631	-20	xx	
1920	14.0	5.3	9.7	-0.6	700	+49	1588	+61
1930	14.2	5.3	9.8	-0.5	636	-15	1599	+72
1940	14.4	5.5	10.0	-0.3	641	-10	1527	0
1950	14.6	5.7	10.2	-0.1	616	-35	1572	+45
1960	14.1	5.7	9.9	-0.4	678	+27	1500	-27
1970	13.7	5.7	9.7	-0.6	686	+35	1487	-40
1980	14.0	5.8	9.9	-0.4	655	+4	1538	+11
1990	14.4	6.1	10.3	0.0	639	-12	1554	+27
2000	14.9	6.6	10.8	+0.5	660	+9	1569	+42

Anom = difference from current 1971 to 2000 climatological average.
 Temperatures in degrees C, Rainfall in mm, Sunshine in hours.

Extreme values from the Wokingham climatological series.

Highest annual mean maximum	16.1	in 2003
Lowest annual mean maximum	12.4	in 1888
Highest annual mean minimum	7.6	in 2006
Lowest annual mean minimum	3.9	in 1887
Highest annual mean temperature	11.7	in 2006
Lowest annual mean temperature	8.4	in 1887
Highest recorded temperature	36.9	on 10th August 2003
Lowest recorded temperature	-15.3	on 14th January 1982
Wettest year	952 mm	in 1903
Driest year	337 mm	in 1921
Highest daily rainfall	71.6 mm	on 20th September 1980
Sunniest year	1906 hours	in 2003
Dullest year	1274 hours	in 1958
Most days with snow falling	40	in 1917
Most days with snow lying	53	in 1963

Top ten since 1882

Warmest		Coldest		Wettest		Driest		Sunniest		Dullest		
Year	Deg C	Year	Deg C	Year	mm	Year	mm	Year	Mean	Year	Mean	
1	2006	11.7	1887	8.4	1903	952	1921	337	2003	5.2	1958	3.5
2	2002	11.4	1888	8.5	1951	887	1990	459	1990	5.1	1932	3.7
3	1999	11.3	1892	8.5	2000	872	1902	477	1989	5.1	1968	3.7
4	1990	11.3	1891	8.7	1960	857	1887	487	1911	5.1	1981	3.7
5	1989	11.3	1963	8.7	2002	853	1947	491	1949	5.0	1912	3.8
6	2004	11.2	1885	8.8	1916	842	2005	492	1929	5.0	1931	3.8
7	2003	11.2	1919	8.8	1974	837	1996	508	1921	5.0	1936	3.8
8	1997	11.2	1886	8.9	1915	815	1933	509	1959	4.9	1960	3.8
9	1995	11.2	1917	8.9	1927	814	1898	510	1933	4.9	1966	3.8
10	2005	11.1	1962	8.9	1968	793	1938	511	1995	4.8	1993	3.8