

WOKINGHAM METEOROLOGICAL DATA

Emmbrook, Wokingham, Berkshire. Annual Summary 2007

Temperature

	°C	°F	Anom	Rank in 126 years
Mean maximum	15.6	60.1	(+1.2)	8th highest
Mean minimum	6.9	44.4	(+0.7)	8th highest
Daily mean	11.2	52.2	(+0.9)	6th highest
Highest maximum	28.4	83.1		on 5th August
Lowest maximum	3.6	38.5		on 15th December
Highest minimum	16.3	61.3		on 16th July
Lowest minimum	-7.1	19.2		on 7th February
Mean grass minimum	3.8	38.8		
Lowest grass minimum	-11.5	11.3		on 20th December
Mean 30cm earth temp.	12.3	54.1	(+0.8)	
Highest 30cm	19.5	67.1		on 6th August
Lowest 30cm	3.3	37.9		on 22nd December
Mean 100cm earth temp	13.5	56.3		
Highest 100cm	18.9	66.0		on 15th August
Lowest 100cm	7.7	45.9		on 12th February
Warmest month	July,	daily mean 16.5°C,	61.7°F	
Coollest month	December,	daily mean 5.3°C,	41.5°F	

Table 1. Temperature category for each month. (See note 2, page 4)

Category	Month
1. Very cool	-----
2. Cool	-----
3. Normal	Jun, Jul, Aug, Sep, Oct, Dec
4. Warm	Feb, Mar, May, Nov
5. Very warm	Jan, Apr

Table 2. Number of days with max/min air temperature in given range.

Range, deg C	Number of days		Range, deg C	Number of days	
	Max	Min		Max	Min
-10.0 to -5.1	0	4	15.0 to 19.9	113	6
-5.0 to -0.1	0	37	20.0 to 24.9	80	0
0.0 to 4.9	11	73	25.0 to 29.9	6	0
5.0 to 9.9	45	144	30.0 to 34.9	0	0
10.0 to 14.9	110	101	35.0 to 39.9	0	0

Table 3. Monthly totals of Air Frost and Ground Frost.

	Jan	Feb	Mar	Apr	May	Jun	
Air frost	4 (-6)	8 (-2)	5 (-2)	2 (-2)	0 (-1)	0 (0)	
Ground frost	14 (-5)	11 (-7)	18 (+1)	14 (0)	4 (-3)	0 (-2)	
	Jul	Aug	Sep	Oct	Nov	Dec	Annual
Air frost	0 (0)	0 (0)	0 (0)	4 (+3)	7 (+1)	11 (+2)	41 (-7)
Ground frost	0 (0)	0 (0)	0 (-3)	9 (+1)	14 (-1)	16 (0)	100 (-20)

Date of: last spring air frost, 8th April ground frost, 29th May
 first autumn air frost, 19th October ground frost, 18th October
 Frost free period, air 193 days, ground 141 days.
 Annual total of air frost duration: 294.5 hours
 Frostiest month December, 123.4 hours

[Difference from 1971-2000 average in brackets]

Temperature anomaly in deg C

Rainfall.

Total 745.0 mm 29.33 inches 114 % of average 24th highest in 126 years

Number of : Rain days 167 (+8) Wet days 117 (+5) Days => 5mm 50

Highest daily fall to 9am: 39.2 mm on 20th July

Wettest month, July 119.1 mm 287 % of average
 Driest month, April 1.5 mm 3 % of average

Duration of measurable rainfall; 505.7 hours Longest in a day; 20.7 hours on 27th May
 Highest monthly duration; 74.9 hours in May Lowest ; 2.4 hours in April

Number of dry spells, (5 or more consecutive dry days): 14
 Longest dry spell; 23 days, 31st March to 22nd April
 Total number of : Dry days, 198 (-8) Days in dry spells, 133

Table 4. **Rainfall category for each month.**

Category	Month
1. Very wet	May, Jun, Jul
2. Wet	Feb
3. Normal	Jan, Mar, Aug, Sep, Nov
4. Dry	Oct, Dec
5. Very dry	Apr

(See note 2, page 4)

Table 4a **Rain rate, maximum daily, between given limits**

Rate mm/hr	Days	Rate mm/hr	Days
<10	88	50 to 100	8
10 to 25	21	100 to 250	5
25 to 50	18	>250	1
Highest rate	506 mm/hr on 19th June		

Table 5. **Distribution of rainfall duration.**

Hours	Days	Hours	Days	Hours	Days
0	174	6.1 to 9.0	18	18.1 to 21.0	1
0.1 to 1.0	69	9.1 to 12.0	4	21.1 to 24.0	0
1.1 to 3.0	57	12.1 to 15.0	1	Missing *	6
3.1 to 6.0	35	15.1 to 18.0	0	*Snow/ice/instrument failure	

Table 6. **Number of days with rainfall between given limits.**

Fall, mm	Days	Fall, mm	Days
0.0 to 0.1	198	10.0 to 19.9	20
0.2 to 0.9	50	20.0 to 29.9	4
1.0 to 4.9	67	30.0 to 39.9	1
5.0 to 9.9	25	> 39.9	0

Sunshine.

(Recorded on an electronic sunshine detector)

Total 1684.3 hours Daily mean 4.61 hours (118%)

Sunniest day 14.6 hours on 5th June
 Number of days: Nil sun 40 =>12 hrs 21

Weather.

Number of days with:

Snow or sleet falling; 9 (-5)
 Snow lying at 0900 GMT; 3 (-3)
 Thunder heard; 13 (-3)
 Hail; 8 (-4) =>5mm; 3 <5mm, 5
 Fog at 0900 GMT; 3 (-12)

Air Pressure,

corrected to MSL.

Mean at 0900 GMT 1017.2 mabr (+1.2)
 Absolute highest 1042.0 mbar on 13th December
 Absolute lowest 976.8 mbar on 9th December

[Difference from 1971-2000 average in brackets]

Wind.**Table 7. Summary of monthly wind speed at 10 metres.**

Month	Mean speed mph	Windiest day		Highest gust		0.5 mph or less hours
		mph	Date	mph	date/time	
January	10.0	18.7	18th	74	18/1352	2.4
February	6.4	14.7	28th	56	28/1546	18.3
March	7.7	15.0	5th	51	6/0150	9.6
April	5.4	11.9	1st	33	1/1235	24.1
May	7.3	12.8	7th	41	8/1130	6.3
June	6.1	10.8	29th	32	29/1430	10.1
July	7.3	13.7	6th	38	6/0213	6.1
August	5.8	10.2	22nd	36	22/1131	20.4
September	5.5	11.5	24th	40	24/0602	22.7
October	4.0	11.1	28th	30	28/0914	55.1
November	5.6	11.3	30th	41	8/2028	22.4
December	7.7	15.2	28th	51	2/1221	17.8
Year	6.6	18.7	18th January	74	18th January	215.3

Table 8. Summary of hourly mean wind direction. Number of hours with wind from given directions, in degrees from true north, summed over 30 degree segments.

Month	Direction												Calm
	030 NNE	060 ENE	090 E	120 ESE	150 SSE	180 S	210 SSW	240 WSW	270 W	300 WNW	330 NNW	360 N	
January	31	2	1	0	1	8	195	300	112	36	15	43	0
February	38	59	26	22	49	149	77	115	47	25	37	28	0
March	79	32	3	10	12	32	131	131	116	53	56	89	0
April	241	99	17	10	10	23	118	42	29	19	31	81	0
May	126	52	16	9	19	33	120	186	49	42	24	68	0
June	119	37	30	28	20	71	169	122	45	21	17	41	0
July	19	24	13	7	9	37	220	228	92	52	31	12	0
August	48	24	5	5	11	78	151	94	74	60	51	143	0
September	27	28	9	3	2	33	148	144	51	54	87	134	0
October	123	97	27	25	15	67	171	76	27	38	39	39	0
November	24	27	25	21	16	23	161	144	102	71	46	60	0
December	49	90	70	21	5	21	167	159	89	21	35	17	0
Year	924	571	242	161	169	575	1828	1741	833	492	469	755	0

Appendix 1.

Monthly statistics from the electronic sunshine detector, 2007.

Note:

Month	Total hours	Highest daily, hrs/date	Number of days with:					
			Nil	0.1 to 2.9	3.0 to 5.9	6.0 to 8.9	9.0 to 11.9	=>12.0 hrs
January	72.0	7.8 on 31st	4	15	9	3	0	0
February	71.6	8.7 on 3rd	5	11	7	5	0	0
March	175.4	11.7 on 26th	2	6	5	14	4	0
April	242.8	14.1 on 30th	1	5	2	7	9	6
May	163.0	14.3 on 2nd	2	11	6	6	2	4
June	148.5	14.6 on 5th	1	11	8	5	3	2
July	160.4	13.3 on 31st	1	11	8	4	6	1
August	208.3	14.2 on 5th	3	7	3	6	4	8
September	147.2	11.9 on 15th	0	11	9	5	5	0
October	111.0	10.7 on 5th	8	11	2	4	6	0
November	102.7	8.3 on 15th	4	11	8	7	0	0
December	81.4	6.7 on 20th	9	9	9	4	0	0
Year	1684.3	14.6	40	119	76	70	39	21

Appendix 2.

Monthly categories, quick look table, 2007.

Month	Temperature Category	Rainfall Category	Sunshine Category	Index	(see note 1)
January	5 Very mild	3 Normal	5 Very Sunny	13	
February	4 Mild	2 Wet	3 Normal	9	
March	4 Mild	3 Normal	5 Very Sunny	12	
April	5 Very mild	5 Very Dry	5 Very Sunny	15	
May	4 Warm	1 Very Wet	2 Dull	7	
June	3 Normal	1 Very Wet	3 Normal	7	
July	3 Normal	1 Very Wet	2 Dull	6	
August	3 Normal	3 Normal	4 Sunny	10	
September	3 Normal	3 Normal	3 Normal	9	
October	3 Normal	4 Dry	3 Normal	10	
November	4 Mild	3 Normal	5 Very Sunny	12	
December	3 Normal	4 Dry	5 Very Sunny	12	

Note 1). Index, on scale 3 to 15 between 'worst' and 'best' months.

Note 2). Definition of categories used in Tables 1 and 4 and in Appendix 2: Category 1; the value lies within the worst 10% of ranked values for all years available. Category 2; between 10% and 30% above the worst value. Category 3; within 20% of the median value. Category 4; between 10% and 30% below the best value. Category 5; within 10% of the best value.

In this context, best (worst) refer to above (below) normal temperature and sunshine, but below (above) normal rainfall.

For temperature and rainfall, data since 1882 are considered, and since 1908 for sunshine.

Summary of notable features in 2007.

- January.** Record high temperatures, very sunny, rainfall above average, very windy. New January record high mean temperature and mean minimum and 2nd highest mean maximum, all in the past 126 years. Highest max is 4th highest in 104 years. Windiest since 1995, and a wind gust of 74 mph on the 18th is highest for any day since 1993.
- February.** Mild and wet with above normal sunshine. Lowest minimum, -7.1C, lowest since 1991. Wettest since 1990. number of dry days equal lowest with 1995 since 1937. 7cm snow depth on the 8th, deepest for this month since 1991.
- March.** Mild and very sunny with near normal rainfall. Highest minimum lowest since 1984
- April.** Record high temperatures, very dry, very sunny. An outstanding month, with both the mean maximum and daily mean temperature highest in 126 years. The mean maximum is 1.6C above the average for May. Mean daily temperature range, 13.3C is highest since 1893. The highest min is a new record high. Driest since 1912 with just 1.5 mm of rain recorded. The number of dry days is a new record for April. Probably 2nd sunniest after 1912 in the past 100 years. Mean wind speed equal lowest with 1997 since 1988.
- May.** Mild, very wet and dull. Lowest minimum is 2nd highest in 104 years. Wettest since 1981 and 9th wettest in 126 years. Highest daily fall is highest since 1985. 79.8 fewer sunshine hours than in April this year.
- June.** Very wet with well below normal sunshine and well above normal temperature. Mean minimum 2nd highest after 1976 in 126 years. Highest max is lowest since 1991. Wettest since 1998 and 7th wettest in 126 years. The highest daily fall, associated with a severe thunderstorm on the 19th, is most since 1994. Rain rates between 300 and 500 mm/hr occurred in this storm. Sunshine total lowest for any month since February of this year.
- July.** Very wet, dull, below normal temperature. Highest maximum temperature lowest since 1988 and 10th lowest in 104 years. Wettest July since 1957, and before that 1920, and 7th wettest in 126 years. Extreme rainfall on 20th when 63.5 mm fell, of which 50.2 mm fell in 4 hours ending midday. Serious local flooding around the Emm and Loddon, with damage to the Emmbrook School. Windiest July since 1993.
- August.** Temperature near normal, rainfall well below normal, sunny. Mean max and mean min are lowest since 1993. Below average rainfall a welcome respite after the three previous months.
- September.** Temperature above normal, rainfall below normal, sunshine near normal. Only 1.0 mm of rain fell in the 28 days up to the 19th.
- October.** Temperature well above normal, sunshine above normal, and dry. Driest since 1995 with 6 more dry days than average. Mean wind speed lowest since before 1988.
- November** Mild and very sunny with rainfall well above normal.
- December.** Temperature above normal, dry, very sunny. Highest max is equal highest since 1985, but the lowest min is lowest since 2000.

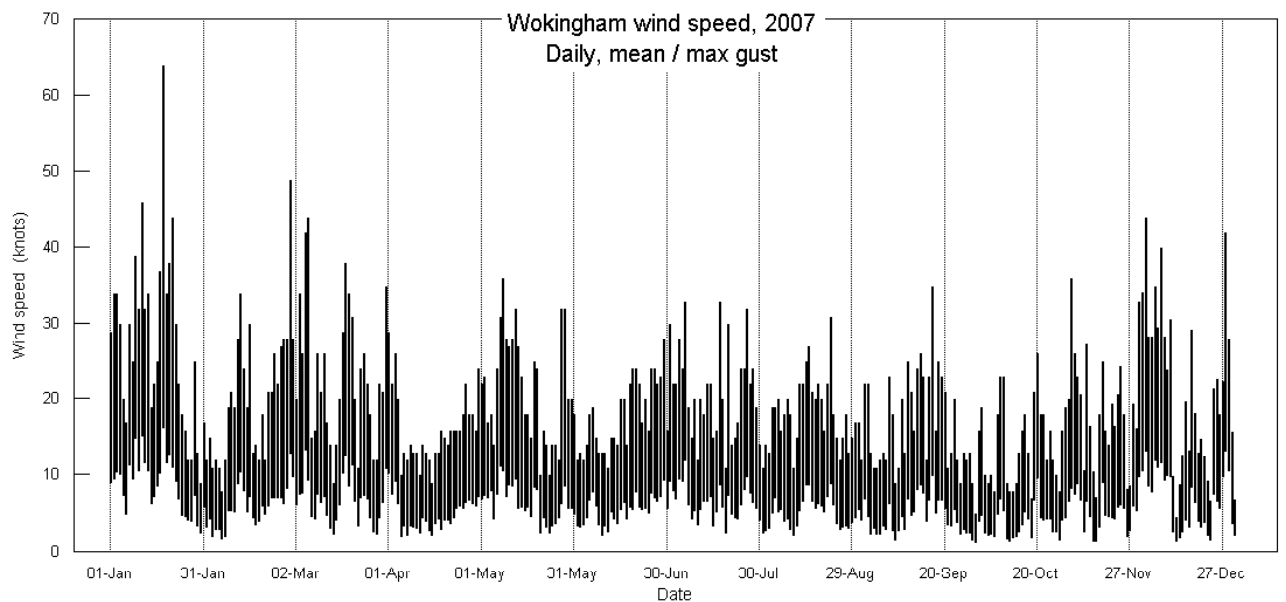
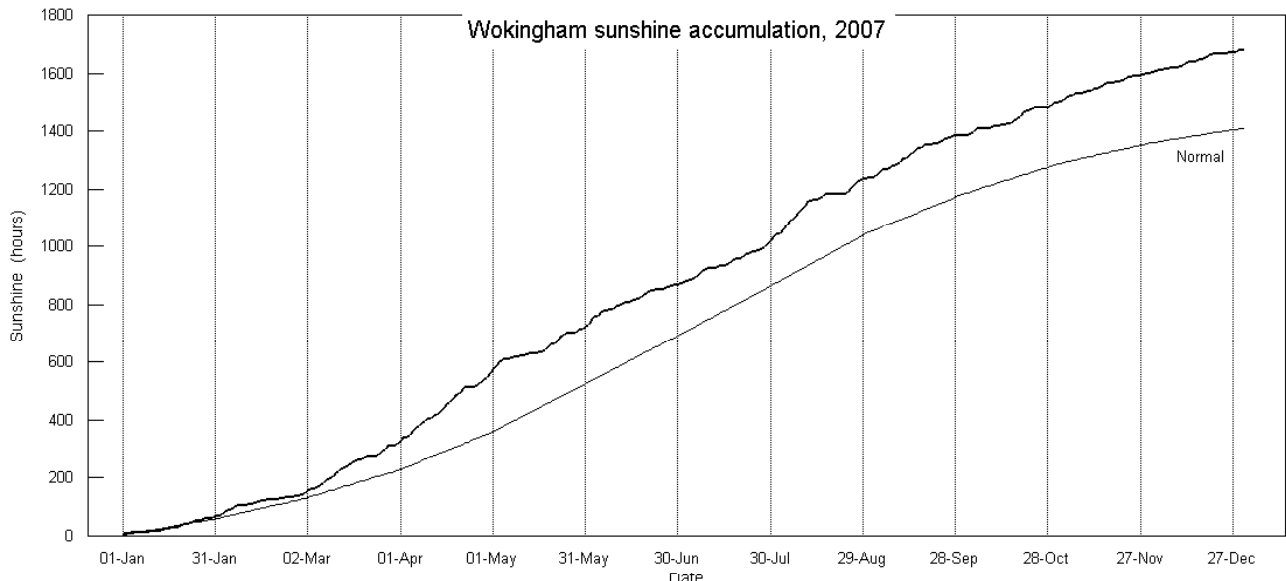
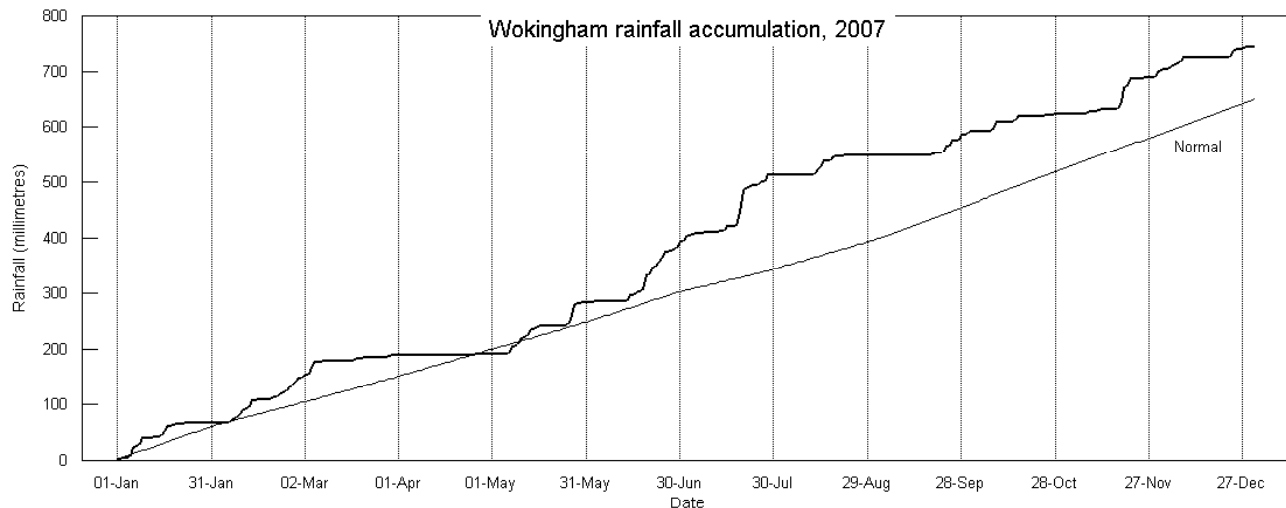
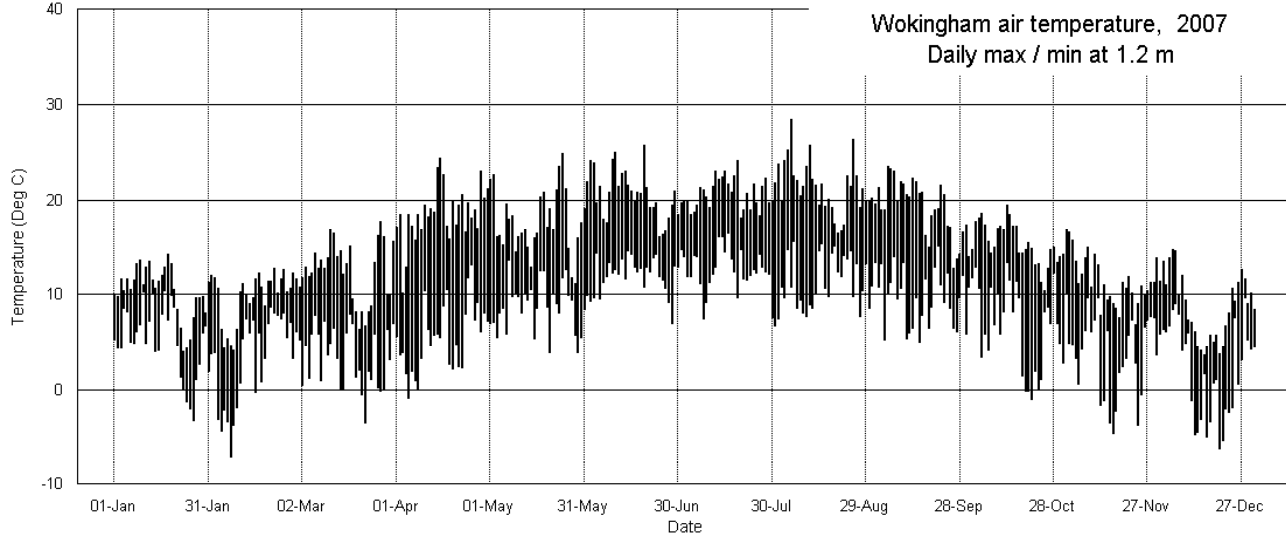
Year

Very Mild.

Wet.

Sunny.

Another year in the very mild category, together with 2006, 2005, 2003, 2002 and 1997 in recent years. The mean temperature is down 0.5° on last year's record values, but nevertheless ranks 6th highest in 126 years. The high mean temperatures this year have been achieved without any exceptionally hot weather, in fact there was a notable absence of hot days in the summer, and the year's highest temperature was only 28.4°, 2.0° below the median and lowest since 1993. The year's lowest max is the highest on record, 4.1° above the median, so that the overall range of daily maxima is reduced by 6.1° from its normal value. The lowest min is 0.7° above the median while the highest min is 0.8° below the median. Compared with average it has not been a frosty year, the deficit being 90 hours, and there were 9 fewer days with air frost. 2007 has been quite a wet year, with 14 % more rainfall than average, and the wettest year since 2002. Notably, it was in the three month period May to July that excessive rainfall became a serious problem. Over those 3 months, 321.4 mm fell, which is almost half the average annual total, compared with less than one quarter in a normal year, and it is the wettest May to July period since 1903. After such a wet period it was not surprising that a day of unusually heavy rain on the 20th of July resulted in serious flooding, both locally and in other parts of England. At the other end of the scale, April was driest since 1912 and the 3rd driest on record. Thunder was less frequent than average. A notable thunderstorm crossed the town on the 19th of June, with frequent lightning and torrential rain. There were fewer days than average with snow, and snow lying was recorded on 3 occasions, 24th Jan/2cm, 8th Feb/7cm and 9th Feb/2cm depth. It was a fairly sunny year, with the highest number of sunshine hours since 2003. However, the 14.6 hours on the 5th of June, the year's sunniest day, is lowest since 1996. The number of days with nil sun is 19 fewer than normal, and is 2nd lowest after 2003 in the past 27 years. The mean wind speed this year is 0.2 mph below the average for the past 20 years. January was by far the windiest month, and was in fact the windiest month of any name since Feb 2002. A notable gust of 74 mph on the 18th of January was the highest gust we have had since January 1993, and the 3rd highest in 20 years. Compared with average, winds from N, NE, SW and W were less frequent, while those from E, SE, S and NW were more frequent. The greatest departures from average were +7.2 % for S and -6.1 % for W. The overall relative humidity was 79.2 %, and the lowest value was 21 % on the 22nd of May. The mean water vapour content per kg of air was 6.8 g at 09 GMT and 6.5 g at 15 GMT. The overall span of pressure, from absolute max to absolute min was 65.2 mbar, 4.3 mbar less than average.



Appendix 4.

Summary of observations at 0900 GMT

Month	Monthly means								Visibility statistics						
	Vis	Cl	TT	Td	RH	WS	WG	pp	TF	FO	VP	PO	MO	GO	EX
January	24.1	74	7.2	4.8	85	8.9	17	1017.0	0	0	2	8	6	11	4
February	14.8	79	5.7	4.3	91	5.1	10	1007.8	0	0	6	6	10	5	1
March	24.2	52	7.6	3.7	77	6.7	13	1017.1	0	0	5	6	5	9	6
April	15.1	65	12.7	7.4	71	5.6	11	1023.5	0	0	0	13	9	8	0
May	23.8	75	13.7	9.0	74	6.6	14	1011.7	0	0	2	4	9	13	3
June	27.2	79	16.9	12.3	75	5.7	12	1012.2	0	0	2	5	7	8	8
July	38.9	80	16.9	11.9	73	6.7	14	1011.8	0	0	1	3	3	8	16
August	33.6	67	17.0	12.0	73	5.2	11	1016.4	0	0	0	0	7	17	7
September	30.0	65	14.7	11.2	80	5.7	12	1021.8	0	0	1	8	3	10	8
October	8.9	72	10.9	9.4	91	3.7	8	1024.5	1	0	9	11	9	1	0
November	17.7	71	6.7	4.7	88	4.6	9	1021.3	0	0	6	4	10	9	1
December	20.7	73	4.4	2.2	87	5.9	12	1021.2	1	1	6	6	7	5	5
Year	23.3	71	11.2	7.8	80	5.9	12	1017.2	2	1	40	74	85	104	59

Summary of observations at 1500 GMT

Month	Monthly means								Visibility statistics						
	Vis	Cl	TT	Td	RH	WS	WG	pp	TF	FO	VP	PO	MO	GO	EX
January	33.4	76	9.2	5.0	76	10.5	22	1016.6	0	0	1	6	5	8	11
February	26.3	77	8.8	4.4	75	7.5	15	1007.7	0	0	1	6	3	13	5
March	29.3	63	11.3	3.0	59	8.7	18	1016.4	0	0	1	7	3	13	7
April	21.5	60	17.4	5.5	47	6.8	14	1021.8	0	0	0	8	9	12	1
May	29.9	69	16.0	7.8	62	7.6	17	1010.9	0	0	1	2	6	17	5
June	28.2	75	19.3	11.1	61	7.2	15	1011.4	0	0	1	4	7	13	5
July	43.3	74	19.2	10.3	59	8.0	17	1011.3	0	0	0	2	4	8	17
August	36.3	69	19.9	10.3	57	6.6	15	1015.4	0	0	0	3	3	15	10
September	35.6	75	17.6	9.5	60	6.3	14	1020.7	0	0	0	2	8	10	10
October	20.7	78	14.1	8.6	70	5.0	10	1023.5	0	0	2	9	11	4	5
November	25.1	74	10.0	5.2	73	5.9	13	1019.9	0	0	1	5	5	16	3
December	20.8	65	7.0	3.0	77	7.5	16	1019.7	1	0	3	10	6	7	4
Year	29.2	71	14.2	7.0	65	7.3	16	1016.3	1	0	11	64	70	136	83

Legend: Vis = visibility in km. Cl = cloud amount %. TT = air temperature, deg C. Td = Dew point, deg C.
 RH = relative humidity %. WS = wind speed at 10 metres, knots. WG = Highest gust in past hour, knots.
 pp = Air pressure at MSL, mbar. TF = thick fog, <210 m. FO = fog, 210 to 900 m. VP = very poor, 1 to 4 km
 PO = poor, 4.1 to 10 km. MO = moderate, 11 to 20 km. GO = good, 21 to 40 km. EX = excellent, >40 km.

Summary of monthly climatic data.

Year 2007

Month	Max	Min	Mean	Anom	Rain	Grass	30cm	100cm	Sun	Frost	pp09	Af	Sf	Th	Ic	Rain							
	C	C	C	C	mm	min	C	C	hrs	hrs	mbar	Gf	Sl	Ha	Fg	ddd	ff	sp	hrs				
January	10.4	4.9	7.6	+3.1	69.2	1.6	7.6	9.8	72.0	27.8	1017.0	4	14	2	1	0	0	1	0	240	6.8	8.7	51.0
February	9.8	3.0	6.4	+1.8	78.9	0.4	6.5	8.5	71.6	59.5	1007.8	8	11	2	2	1	1	0	0	216	2.6	5.6	71.3
March	12.4	3.2	7.8	+1.0	42.9	-0.1	7.9	9.5	175.4	17.1	1017.1	5	18	4	0	1	1	2	0	276	2.6	6.7	43.9
April	18.6	5.3	11.9	+3.3	1.5	1.2	11.4	11.3	242.8	4.3	1023.5	2	14	0	0	0	0	0	0	26	2.1	4.7	2.4
May	17.7	8.6	13.1	+1.1	93.4	5.6	14.5	14.3	163.0	0.0	1011.7	0	4	0	0	1	0	0	0	260	1.9	6.3	74.9
June	20.7	11.8	16.3	+1.3	108.9	9.4	17.7	16.9	148.5	0.0	1012.2	0	0	0	0	2	0	1	0	230	1.7	5.3	47.8
July	20.7	12.3	16.5	-0.9	119.1	9.7	18.4	18.2	160.4	0.0	1011.8	0	0	0	0	5	1	0	0	237	4.8	6.3	46.8
August	21.4	11.2	16.3	-0.8	36.8	8.3	18.3	18.6	208.3	0.0	1016.4	0	0	0	0	0	0	0	0	266	1.8	5.0	28.4
September	19.3	9.5	14.4	+0.1	39.8	6.0	16.4	17.7	147.2	0.0	1021.8	0	0	0	0	1	0	0	0	269	2.3	4.8	20.7
October	15.3	6.6	11.0	+0.2	35.9	3.8	13.1	15.5	111.0	4.9	1024.5	4	9	0	0	0	0	0	1	230	0.4	3.5	35.2
November	11.5	3.6	7.5	+0.4	76.1	0.3	8.8	12.1	102.7	57.5	1021.3	7	14	1	0	2	0	0	0	254	2.4	4.9	48.2
December	8.7	2.0	5.3	-0.1	42.5	-0.9	6.2	9.5	81.4	123.4	1021.2	11	16	0	0	0	0	1	2	233	3.4	6.7	35.1
Year	15.6	6.9	11.2	+0.9	745.0	3.8	12.3	13.5	1684.3	294.5	1017.2	41	100	9	3	13	3	5	3	248	2.3	5.7	505.7

Legend: Max/min/mean = Monthly mean of daily maximum/minimum/mean air temperature at 1.2 metres.
 Anom = Departure of mean temperature from climatic mean. Rain = monthly rainfall total.
 Grass min = Mean grass minimum temperature. 30cm/100cm = Mean earth temperature at 30 and 100 cm depth.
 Sun hrs = Hours of bright sunshine. Frost hrs = hours with air temperature below zero C. pp09 = Air pressure msl at 09 gmt.
 Days with: Af = air frost. Gf = ground frost. Sf = snow falling. Sl = snow lying. Th = thunder. Ha = hail >5mm. Ic = small hail or ice.
 Fg = Fog at 09 gmt. ddd ff = mean wind vector, degrees from true north, speed in knots. sp = mean scalar wind speed knots.
 Rain hrs = duration of measurable rain (excludes snowfall).

Appendix 5.

Wokingham annual climatic data for recent years.

Year	Mean max	Mean min	Mean	Anom	Hi max	Lo min	Rain mm	Grass min	30 cm	100 cm	Sun hrs	Frost hrs	pp09	Af	Sf Gf	Th Sl	Ic Ha	Fg	ddd	ff	sp			
1996	13.9	5.6	9.8	-0.2	30.7	-5.6	508	2.5	11.1	11.4	1621	593	1015.9	68	117	16	8	11	2	7	9	227	0.5	5.7
1997	15.6	6.7	11.2	+1.2	30.6	-8.8	523	3.8	12.0	12.1	1702	440	1016.8	54	104	9	2	14	1	9	18	218	3.0	5.3
1998	15.1	7.1	11.1	+1.1	30.1	-4.0	720	4.1	12.0	12.2	1484	212	1015.6	35	96	7	0	19	5	7	9	225	3.0	5.8
1999	15.5	7.0	11.3	+1.3	30.8	-7.5	742	3.9	12.3	12.5	1700	224	1014.7	35	101	9	4	24	8	7	4	244	2.7	5.9
2000	15.0	7.0	11.0	+1.0	30.5	-7.1	872	3.8	12.0	12.2	1348	254	1013.9	33	104	7	4	15	3	10	14	246	3.1	5.9
2001	14.9	6.5	10.7	+0.7	31.8	-6.2	746	3.5	11.8	12.1	1489	468	1015.7	63	109	20	0	21	1	12	11	242	1.6	5.4
2002	15.5	7.2	11.4	+1.1	31.0	-7.8	853	4.5	12.4	12.5	1484	166	1014.6	26	70	2	0	17	0	13	11	222	2.1	5.8
2003	16.1	6.3	11.2	+0.9	36.9	-6.5	534	3.2	12.0	12.3	1906	458	1017.2	58	121	10	4	8	1	4	7	219	1.3	5.2
2004	15.3	7.1	11.2	+0.9	30.7	-6.2	612	4.0	12.1	12.3	1475	280	1016.1	40	92	13	2	3	4	15	4	241	2.3	5.4
2005	15.4	6.7	11.1	+0.8	31.1	-6.9	492	3.5	12.0	12.2	1610	388	1018.0	55	115	23	4	14	2	12	10	246	1.8	5.2
2006	15.9	7.6	11.7	+1.4	35.8	-6.7	665	4.7	12.2	12.3	1648	377	1016.0	45	82	17	1	20	4	12	10	232	2.2	5.8
2007	15.6	6.9	11.2	+0.9	28.4	-7.1	745	3.8	19.5	13.5	1684	295	1017	41	100	9	3	13	3	5	3	248	2.3	5.7

Legend : See appendix 4.

Wokingham area decadal annual means for the last century

Decade Ending	Mean max	Mean min	Mean	Anom	Mean rain	Anom	Mean sun	Anom
1900	14.1	5.0	9.6	-0.7	600	-51	xx	
1910	13.7	5.1	9.4	-0.9	631	-20	xx	
1920	14.0	5.3	9.7	-0.6	700	+49	1588	+61
1930	14.2	5.3	9.8	-0.5	636	-15	1599	+72
1940	14.4	5.5	10.0	-0.3	641	-10	1527	0
1950	14.6	5.7	10.2	-0.1	616	-35	1572	+45
1960	14.1	5.7	9.9	-0.4	678	+27	1500	-27
1970	13.7	5.7	9.7	-0.6	686	+35	1487	-40
1980	14.0	5.8	9.9	-0.4	655	+4	1538	+11
1990	14.4	6.1	10.3	0.0	639	-12	1554	+27
2000	14.9	6.6	10.8	+0.5	660	+9	1569	+42

Anom = difference from current 1971 to 2000 climatological average.
 Temperatures in degrees C, Rainfall in mm, Sunshine in hours.

Extreme values from the Wokingham climatological series.

Highest annual mean maximum	16.1	in 2003
Lowest annual mean maximum	12.4	in 1888
Highest annual mean minimum	7.6	in 2006
Lowest annual mean minimum	3.9	in 1887
Highest annual mean temperature	11.7	in 2006
Lowest annual mean temperature	8.4	in 1887
Highest recorded temperature	36.9	on 10th August 2003
Lowest recorded temperature	-15.3	on 14th January 1982
Wettest year	952 mm	in 1903
Driest year	337 mm	in 1921
Highest daily rainfall	71.6 mm	on 20th September 1980
Sunniest year	1906 hours	in 2003
Dullest year	1274 hours	in 1958
Most days with snow falling	40	in 1917
Most days with snow lying	53	in 1963

Top ten since 1882

Warmest		Coldest		Wettest		Driest		Sunniest		Dullest		
Year	Deg C	Year	Deg C	Year	mm	Year	mm	Year	Mean	Year	Mean	
1	2006	11.7	1887	8.4	1903	952	1921	337	2003	5.2	1958	3.5
2	2002	11.4	1888	8.5	1951	887	1990	459	1990	5.1	1932	3.7
3	1999	11.3	1892	8.5	2000	872	1902	477	1989	5.1	1968	3.7
4	1990	11.3	1891	8.7	1960	857	1887	487	1911	5.1	1981	3.7
5	1989	11.3	1963	8.7	2002	853	1947	491	1949	5.0	1912	3.8
6	2007	11.2	1885	8.8	1916	842	2005	492	1929	5.0	1931	3.8
7	2004	11.2	1919	8.8	1974	837	1996	508	1921	5.0	1936	3.8
8	2003	11.2	1886	8.9	1915	815	1933	509	1959	4.9	1960	3.8
9	1997	11.2	1917	8.9	1927	814	1898	510	1933	4.9	1966	3.8
10	1995	11.2	1962	8.9	1968	793	1938	511	1995	4.8	1993	3.8