

WOKINGHAM METEOROLOGICAL DATA

Emmbrook, Wokingham, Berkshire. Annual Summary 2008

Temperature

	°C	°F	Anom	Rank in 127 years
Mean maximum	15.1	59.2	(+0.7)	18th highest
Mean minimum	6.5	43.7	(+0.3)	15th highest
Daily mean	10.8	51.4	(+0.5)	16th highest
Highest maximum	28.7	83.7		on 28th July
Lowest maximum	0.6	33.1		on 31st December
Highest minimum	16.6	61.9		on 15th July
Lowest minimum	-7.0	19.4		on 17th February
Mean grass minimum	3.5	38.3	(+0.1)	
Lowest grass minimum	-12.0	10.4		on 17th February
Mean 30cm earth temp.	11.9	53.4	(+0.4)	
Highest 30cm	19.9	67.8		on 29th July
Lowest 30cm	3.2	37.8		on 19th February
Mean 100cm earth temp	12.2	54.0		
Highest 100cm	17.7	63.9		on 12th August
Lowest 100cm	6.5	43.7		on 22nd February
Warmest month	July and August,		daily mean 17.2°C, 63.0°F	
Coollest month	December,		daily mean 4.1°C, 39.4°F	

Table 1. Temperature category for each month. (See note 2, page 4)

Category	Month
1. Very cool	-----
2. Cool	-----
3. Normal	Feb, Mar, Apr, Jun, Jul, Sep, Oct, Dec
4. Warm	Aug, Nov
5. Very warm	Jan, May

Table 2. Number of days with max/min air temperature in given range.

Range, deg C	Number of days		Range, deg C	Number of days	
	Max	Min		Max	Min
-10.0 to - 5.1	0	4	15.0 to 19.9	91	14
-5.0 to -0.1	0	42	20.0 to 24.9	69	0
0.0 to 4.9	9	104	25.0 to 29.9	18	0
5.0 to 9.9	64	105	30.0 to 34.9	0	0
10.0 to 14.9	115	97	35.0 to 39.9	0	0

Table 3. Monthly totals of Air Frost and Ground Frost.

	Jan	Feb	Mar	Apr	May	Jun	
Air frost	1 (-9)	13 (+3)	5 (-2)	7 (+3)	0 (-1)	0 (0)	
Ground frost	11 (-8)	22 (+4)	14 (-3)	14 (0)	5 (-2)	0 (-2)	
	Jul	Aug	Sep	Oct	Nov	Dec	Annual
Air frost	0 (0)	0 (0)	0 (0)	4 (+3)	4 (-2)	12 (+3)	46 (-2)
Ground frost	0 (0)	0 (0)	1 (-2)	14 (+6)	11 (-4)	22 (+6)	114 (-6)

Date of: last spring air frost, 15th April ground frost, 21st May
 first autumn air frost, 25th October ground frost, 28th September
 Frost free period, air 192 days, ground 129 days.
 Annual total of air frost duration: 304.4 hours
 Frostiest month December, 115.3 hours

[Difference from 1971-2000 average in brackets]

Temperature anomaly in deg C

Rainfall.

Total 716.8 mm 28.22 inches 110 % of average 32nd highest in 127 years

Number of : Rain days 170 (+10) Wet days 120 (+8) Days => 5mm 49 (+4)

A rain day has at least 0.2 mm A wet day has at least 1.0 mm

Highest daily fall to 9am: 30.1 mm on 2nd June

Wettest month, January 84.8 mm 139 % of average

Driest month, February 22.0 mm 53 % of average

Duration of measurable rainfall; 519.3 hours Longest in a day; 14.2 hours on 15th March

Highest monthly duration; 63.6 hours in November Lowest ; 17.2 hours in February

Number of dry spells, (5 or more consecutive dry days): 13

Longest dry spell; 17 days, 7th to 23rd February

Total number of : Dry days, 196 (-10) Days in dry spells, 97

Table 4. Rainfall category for each month.

Category	Month
1. Very wet	-
2. Wet	Jan, Mar, Apr, May, Aug
3. Normal	Jun, Jul, Sep, Oct, Nov
4. Dry	Feb, Dec
5. Very dry	-

(See note 2, page 4)

Table 4a Rain rate, maximum daily, between given limits

Rate mm/hr	Days	Rate mm/hr	Days
<10	109	50 to 100	11
10 to 25	30	100 to 250	3
25 to 50	14	>250	0
Highest rate	177 mm/hr on 7th July		

Table 5. Distribution of rainfall duration.

Hours	Days	Hours	Days	Hours	Days
0	166	6.1 to 9.0	13	18.1 to 21.0	0
0.1 to 1.0	83	9.1 to 12.0	6	21.1 to 24.0	0
1.1 to 3.0	53	12.1 to 15.0	3	Missing *	2
3.1 to 6.0	40	15.1 to 18.0	0	*Snow/ice/instrument failure	

Table 6. Number of days with rainfall between given limits.

Fall, mm	Days	Fall, mm	Days
0.0 to 0.1	196	10.0 to 19.9	17
0.2 to 0.9	50	20.0 to 29.9	1
1.0 to 4.9	71	30.0 to 39.9	1
5.0 to 9.9	30	> 39.9	0

Sunshine.

(Recorded on an electronic sunshine detector)

Total 1581.9 hours Daily mean 4.32 hours (111%)

Sunniest day 14.4 hours on 13th May

Number of days: Nil sun 51 =>12 hrs 16

Weather.

Number of days with:

Snow or sleet falling; 12 (-2)
 Snow lying at 0900 GMT; 2 (-4)
 Thunder heard; 22 (+6)
 Hail; 23 (+11) =>5mm; 5 <5mm, 18
 Fog at 0900 GMT; 7 (-8)

Air Pressure,

corrected to MSL.

Mean at 0900 GMT 1014.8 mabr (-1.2)

Absolute highest 1043.5 mbar on 16th February

Absolute lowest 961.2 mbar on 10th March

[Difference from 1971-2000 average in brackets]

Wind**Table 7. Summary of monthly wind speed at 10 metres**

Month	Mean speed mph	Windiest day		Highest gust		0.5 mph or less hours
		mph	Date	mph	Date/time	
January	9.6	15.3	31st	47	31/1024	1.8
February	6.8	13.6	5th	43	29/2315	26.0
March	9.2	17.5	12th	50	12/0823	1.5
April	7.0	12.2	18th	37	17/1141	5.9
May	5.4	10.6	26th	37	26/0656	19.8
June	6.2	13.1	22nd	37	19/0000	14.2
July	6.6	11.2	5th	35	5/1838	6.5
August	7.1	12.0	13th	39	13/1421	4.8
September	5.5	11.4	3rd	35	3/1411	44.4
October	6.6	11.7	1st	39	1/1328	10.9
November	7.3	13.7	9th	44	9/1636	5.1
December	6.2	10.8	21st	39	13/0038	13.9
Year	7.0	17.5	12th March	50	12th March	154.8

Table 8. Summary of hourly mean wind direction. Number of hours with wind from given directions, in degrees from true north, summed over 30 degree segments.

	Direction											
	360 N	030 NNE	060 ENE	090 E	120 ESE	150 SSE	180 S	210 SSW	240 WSW	270 W	300 WNW	330 NNW
January	6	0	15	44	12	9	58	213	310	46	24	7
February	12	55	144	27	5	16	64	146	138	63	12	14
March	74	53	9	4	8	13	45	102	163	170	55	48
April	37	47	100	22	13	12	39	160	118	84	34	54
May	31	230	233	74	28	22	24	45	19	11	7	20
June	55	57	41	9	13	9	22	103	192	99	55	65
July	3	6	31	26	33	28	60	192	175	97	65	28
August	8	7	2	14	23	22	46	247	284	69	10	12
September	19	106	85	58	19	26	40	162	121	47	19	18
October	32	37	13	11	6	20	54	272	160	80	38	21
November	84	119	11	9	4	13	34	100	157	95	49	45
December	44	58	128	15	3	14	41	114	129	90	58	50
Year	405	775	812	313	167	204	527	1856	1966	951	426	382

Appendix 1.

Monthly statistics from the electronic sunshine detector, 2008.

Note:

Month	Total hours	Highest daily, hrs/date	Number of days with:					
			Nil	0.1 to 2.9	3.0 to 5.9	6.0 to 8.9	9.0 to 11.9	=>12.0 hrs
January	73.7	8.0 on 27th	10	8	10	3	0	0
February	149.5	9.7 on 18th	3	8	1	10	7	0
March	93.4	8.9 on 30th	3	15	7	6	0	0
April	153.6	11.2 on 17th	2	9	5	9	5	0
May	187.4	14.4 on 13th	6	4	9	4	1	7
June	215.2	14.2 on 9th	0	7	6	6	6	5
July	192.4	14.2 on 30th	3	4	6	12	2	4
August	109.5	11.2 on 30th	2	14	10	2	3	0
September	119.7	11.2 on 26th	3	13	4	5	5	0
October	147.2	9.7 on 10th	2	10	3	11	5	0
November	55.6	7.2 on 25th	12	10	4	4	0	0
December	84.7	6.7 on 20th	5	14	6	6	0	0
Year	1581.9	14.4	51	116	71	77	34	16

Appendix 2.

Monthly categories, quick look table, 2008.

Month	Temperature Category	Rainfall Category	Sunshine Category	Index	(see note 1)
January	5 Very mild	2 Wet	5 Very Sunny	12	
February	3 Normal	4 Dry	5 Very Sunny	12	
March	3 Normal	2 Wet	2 Dull	7	
April	3 Normal	2 Wet	3 Normal	8	
May	5 Very warm	2 Wet	3 Normal	10	
June	3 Normal	3 Normal	3 Normal	9	
July	3 Normal	3 Normal	3 Normal	9	
August	4 Warm	2 Wet	1 Very Dull	7	
September	3 Normal	3 Normal	2 Dull	8	
October	3 Normal	3 Normal	5 Very Sunny	11	
November	4 Mild	3 Normal	2 Dull	9	
December	3 Normal	4 Dry	5 Very Sunny	12	

Note 1). Index, on scale 3 to 15 between 'worst' and 'best' months.

Note 2). Definition of categories used in Tables 1 and 4 and in Appendix 2: Category 1; the value lies within the worst 10% of ranked values for all years available. Category 2; between 10% and 30% above the worst value. Category 3; within 20% of the median value. Category 4; between 10% and 30% below the best value. Category 5; within 10% of the best value. In this context, best (worst) refer to above (below) normal temperature and sunshine, but below (above) normal rainfall. For temperature and rainfall, data since 1882 are considered, and for sunshine since 1908.

Summary of notable features in 2008.

- January.** Wet and windy, but very mild and very sunny. The mean temperature is 4th highest in 127 years. Both the lowest and highest minimum are the highest on record. The lowest grass min is highest in the past 29 years. The number of air frosts is least since before 1956. Wettest since 1999.
- February.** Mean temperature well above normal with exceptional daily range, dry and very sunny. The mean daily temperature range is highest since before 1882. The mean max ranks 5th highest in 127 years while the mean min is 40th lowest. The highest max is highest since 1998. The lowest grass min is lowest since 1991. The number of dry days is most since 1998. Sunniest February is the past 100 years with over twice the average.
- March.** Wet, windy and dull but with temperatures near normal. Wettest since 2001 and before that 1981. The number of days with hail is a new record. Daily mean sunshine 2.15 hours less than in February. Windiest since 1995. Air pressure on 10th lowest for March since before 1949.
- April.** Wet with temperature and sunshine near normal. The number of days with air frost not exceeded since 1977. Six cm of snow lying at 09 GMT on the 6th, first April since 1989 to have any.
- May.** Near record temperatures. Wet with sunshine near normal. The mean temperature is equal highest with 1992 since before 1882. Despite the rainfall being 132 % of average it was the driest May since 2005. The mean wind speed is second lowest in the past 21 years.
- June.** Temperature, rainfall and sunshine near normal. The highest max is lowest since 1991. 30.1 mm of rain on the 2nd, most on a June day since 1994, caused local flooding.
- July.** Rainfall above normal, temperature and sunshine near normal. The lowest grass min is lowest since 1993. Only 3 wetter Julys in the past 20 years.
- August.** Warm, wet, very dull and quite windy. The mean max is lowest since 1988 yet the mean min is 3rd highest in 127 years. The daily mean temperature range is lowest since before 1976. The highest max is lowest since 1993. It is wettest since 2001 with 11 fewer dry days than average, equal lowest with 1992 since before 1976. Exceptionally dull, one of the dullest Augusts in the past 100 years. Only January and March this year have had a lower daily mean sunshine. Windiest since 1992.
- September.** Dull with temperature and rainfall near normal. Coolest since 1996. The highest max is lowest since 1965 and 3rd lowest in 105 years. The 5th was the wettest September day since 1995. The month's highest pressure is highest since 1986.
- October.** Temperature and rainfall below normal, very sunny. Lowest max is lowest since 1981. The highest min is lowest since 1994. The lowest grass min is lowest since 1997. Most days with ground frost since 1992. Snow on the 28th for first time in October since 1941, and 1 cm of snow lying at 09 GMT on 29th is first such occurrence since before 1912.
- November** Mild and dull with rainfall above normal. The highest max is lowest since 1987. Dullest since 1994. Only 0.1 hours of sunshine before the 7th.
- December.** Dry and very sunny with temperature well below normal. Most dry days since 1991.

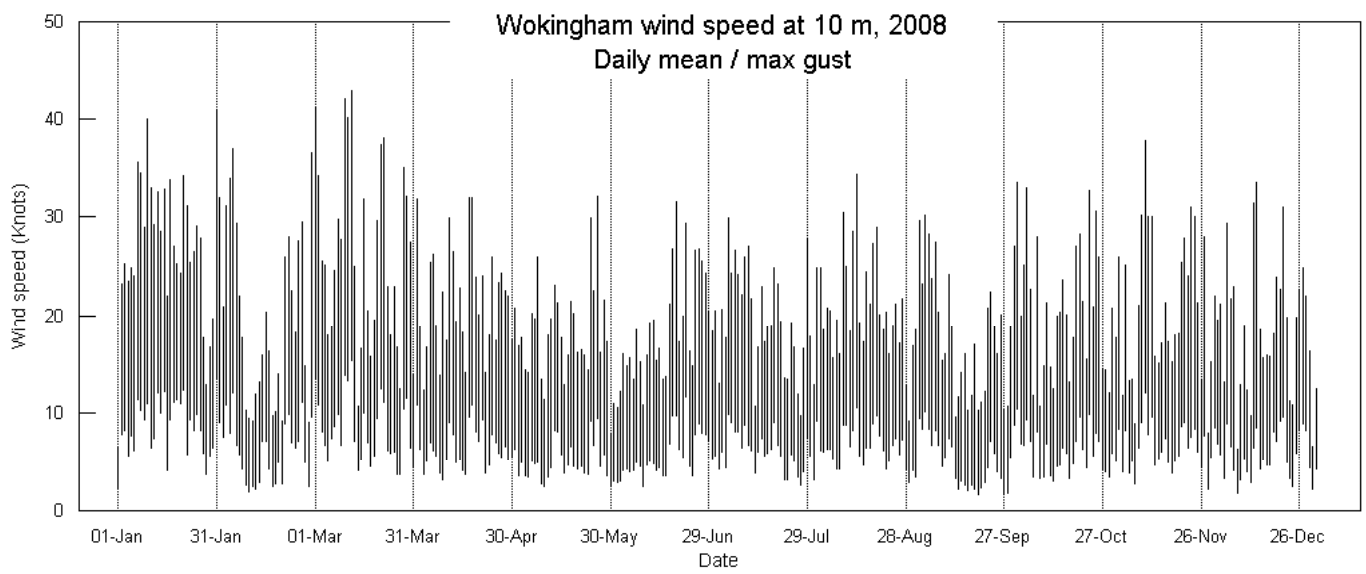
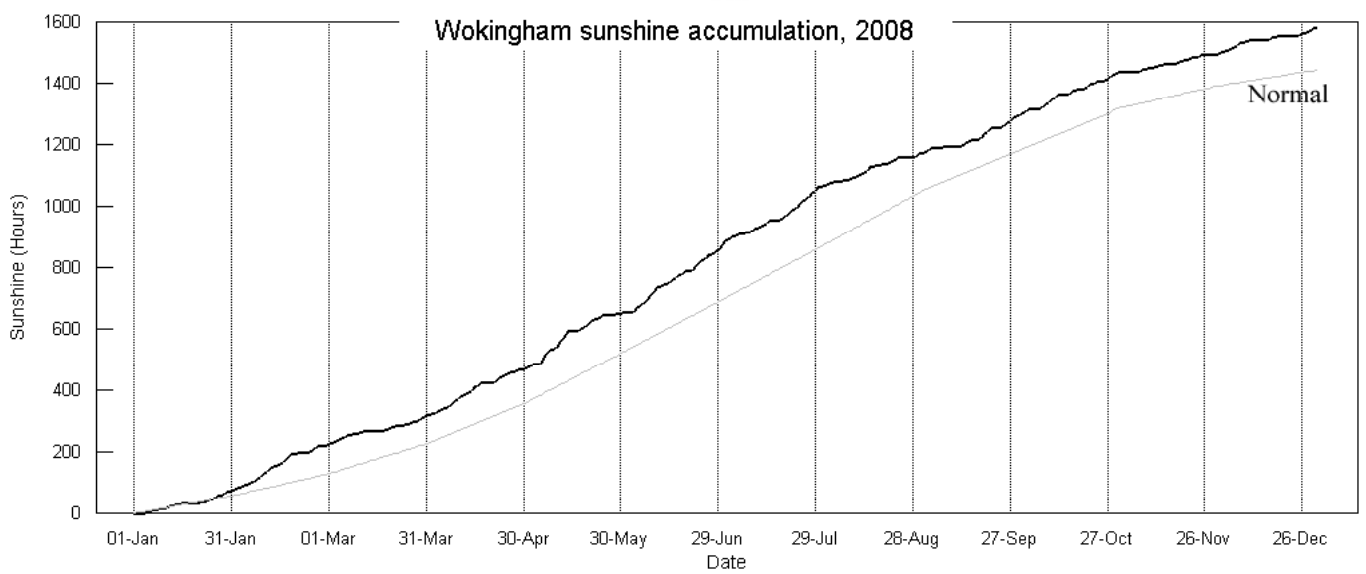
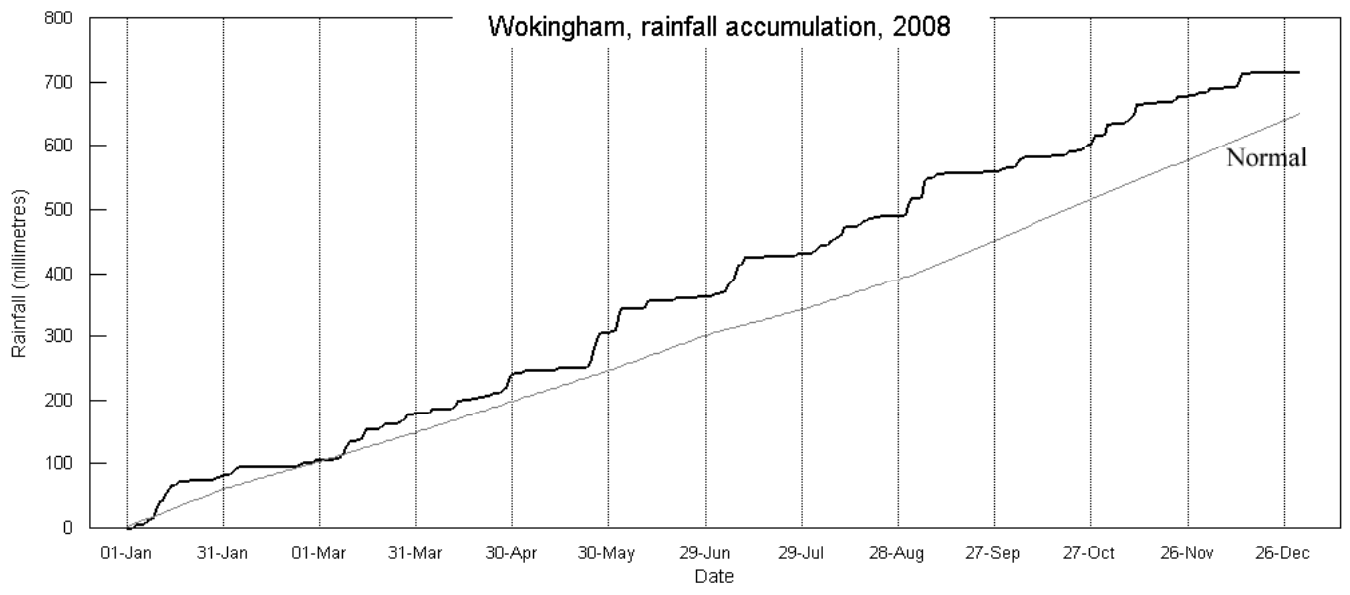
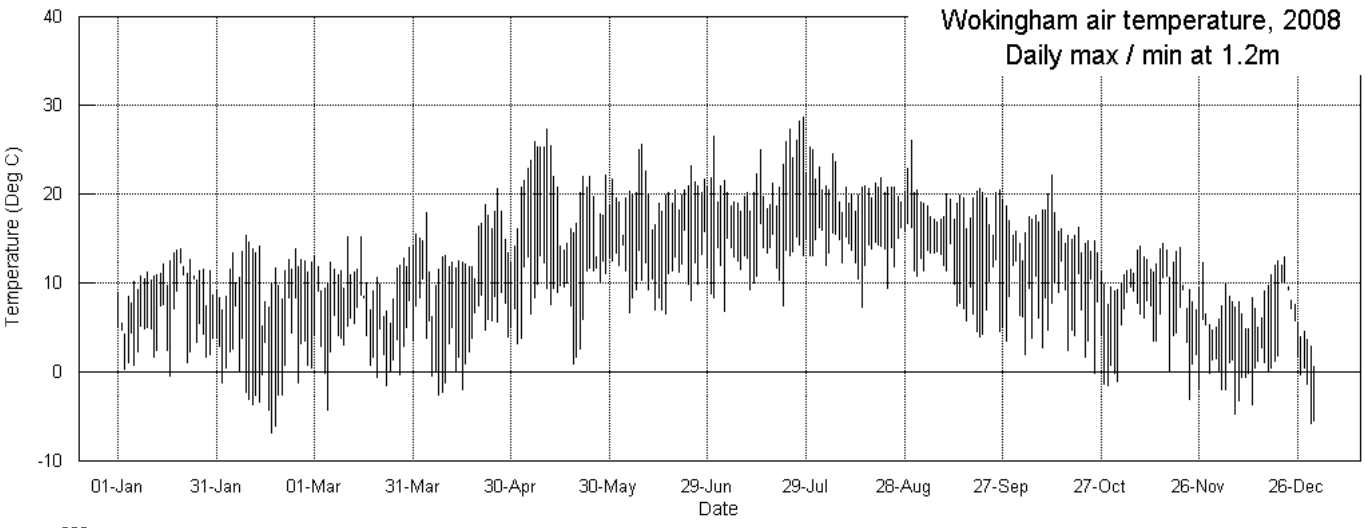
Year

Mild.

Wet.

Above Normal Sunshine.

A slightly cooler year in 2008, with the mean temperature lowest since 2001, and before that 1996. Nevertheless, it is 0.9° above the long-term median. Both the mean max and mean min are similarly placed with respect to their medians. The highest max is 1.6° below the median, and together with 2007 are the only two years in the past 15 to fail to reach 30°. The lowest min is similar to recent years and is 0.8° above the long-term median. The lowest max is also above the median, by 1.1°. As in 2007, this has not been a particularly frosty year, and there were 73 fewer hours with air frost than average. There was slightly less rainfall than in 2007, but the total is still well above the long-term median of 640 mm. January, March, April, May and August were all wet months, and just February and December were dry. Nevertheless the number of dry days is only 10 fewer than average. There were no exceptionally high daily totals, the years highest being 1.6 mm less than the median, and only 2 days had over 20 mm. The duration of measurable rain is very close to average. Thunder was more frequent than average, and most since 1999. A storm of moderate intensity on 7th July had some close cloud to ground lightning, and gave a rainfall rate of 177 mm/hr at 1527 GMT. Hail was also more frequent than average, the combined total of days with hail and other types of solid precipitation being the most in the past 100 years, though for large hail alone, most only since 1999. Snow was slightly less frequent than average, and there were 4 fewer days than normal with snow lying. Lying snow was recorded on the 6th April/6cm, and 29th October/1cm, both outside the more usual winter season. The sunshine total this year is lowest since 2004, yet is 157 hours more than the expected average for the type of instrument currently in use. The year's sunniest day was in May, whereas it more usually occurs in June or July, and the 14.4 hours recorded on that day is lowest since 1992. The number of days with nil sun is 7 fewer than average. The mean wind speed is 0.2 mph above average, and is highest since 1995. However, the year's highest gust of 50 mph is 10 mph below the average, and is lowest since 2003. The frequency of SW, W and NE winds was above average, and N, E, SE, S and NW winds was below average. The greatest departure was for SW winds, 10.3 % more frequent, and S wind, 6.9 % less frequent. The overall mean relative humidity was 77.0 % and the lowest was 25 % on the 11th May. The mean water vapour content per kg of air was 6.4 g at 0900 GMT and 6.1 g at 1500 GMT. The overall pressure span, from maximum to minimum value, was 82.3 mbar, 12.6 mbar above average.



Appendix 4.

Summary of observations at 0900 GMT

Month	Monthly means								Visibility statistics						
	Vis	Cld	TT	Td	RH	WS	WG	pp	TF	FO	VP	PO	MO	GO	EX
January	19.3	75	6.8	4.4	85	8.7	17	1013.1	0	2	3	7	6	11	2
February	15.3	66	4.1	2.0	87	5.5	11	1023.8	1	0	6	10	4	6	2
March	27.1	79	6.5	2.2	75	8.8	17	1007.3	0	0	2	5	7	11	6
April	17.8	71	9.3	4.9	75	7.2	14	1010.7	0	0	2	7	13	8	0
May	15.1	67	15.1	9.6	71	5.1	11	1015.3	0	0	3	12	9	6	1
June	31.6	70	16.3	9.3	62	6.1	13	1017.2	0	0	1	4	3	15	7
July	32.6	66	17.8	11.4	67	6.1	13	1014.0	0	0	2	2	7	9	11
August	28.9	76	17.3	12.7	75	7.0	14	1010.9	0	0	1	4	3	19	4
September	15.9	75	13.9	10.7	81	5.1	10	1017.9	1	0	1	10	11	6	1
October	23.2	60	10.4	7.5	83	6.9	12	1015.2	1	0	5	3	7	11	4
November	22.3	81	7.5	5.0	85	6.2	13	1014.1	0	0	5	8	5	6	6
December	14.2	67	3.1	1.3	88	5.3	11	1019.0	1	1	3	10	7	8	1
Year	22.0	71	10.7	6.8	78	6.5	13	1014.8	4	3	34	82	82	116	45

Summary of observations at 1500 GMT

Month	Monthly means								Visibility statistics						
	Vis	Cld	TT	Td	RH	WS	WG	pp	TF	FO	VP	PO	MO	GO	EX
January	26.3	78	9.1	4.6	74	9.6	20	1011.8	0	0	2	5	5	13	6
February	26.6	59	9.9	1.8	59	7.4	16	1022.5	0	0	1	6	7	8	7
March	36.8	73	9.4	1.5	59	9.8	21	1006.6	0	0	0	0	10	10	11
April	28.9	73	12.4	3.2	55	8.3	19	1009.7	0	0	0	4	5	14	7
May	22.6	75	18.8	8.3	54	6.3	14	1014.4	0	0	1	4	11	12	3
June	38.2	68	19.2	8.5	51	7.1	15	1016.6	0	0	0	2	2	14	12
July	35.2	73	20.6	10.7	55	7.6	17	1013.3	0	0	2	2	4	13	10
August	36.0	82	19.6	12.0	63	8.3	17	1010.5	0	0	1	2	3	14	11
September	26.1	77	16.8	11.0	62	6.6	15	1016.5	0	0	1	2	12	9	6
October	37.5	67	13.4	6.3	63	7.5	16	1014.3	0	0	1	0	5	14	11
November	20.5	83	9.6	5.4	77	7.8	17	1013.2	0	0	3	9	5	10	3
December	20.5	65	5.8	1.9	76	6.3	13	1018.5	0	0	2	4	13	9	3
Year	29.6	73	13.7	6.3	62	7.7	17	1013.9	0	0	14	40	82	140	90

Legend: Vis = visibility in km. Cld = cloud amount %. TT = air temperature, deg C. Td = Dew point, deg C.
 RH = relative humidity %. WS = wind speed at 10 metres, knots. WG = Highest gust in past hour, knots.
 pp = Air pressure at MSL, mbar. TF = thick fog, <210 m. FO = fog, 210 to 900 m. VP = very poor, 1 to 4 km
 PO = poor, 4.1 to 10 km. MO = moderate, 11 to 20 km. GO = good, 21 to 40 km. EX = excellent, >40 km.

Summary of monthly climatic data.

Year 2008

Month	Max	Min	Mean	Anom	Rain	Grass	30cm	100cm	Sun	Frost	pp09	Af	Sf	Th	Ic	Rain							
	C	C	C	C	mm	min	C	C	hrs	hrs	mbar	Gf	Sl	Ha	Fg	ddd	ff	sp	hrs				
January	10.3	4.3	7.3	+2.8	84.8	1.1	6.7	8.3	73.7	3.3	1013.1	1	11	2	0	1	0	3	2	222	6.5	8.3	61.7
February	11.1	0.3	5.7	+1.1	22.0	-3.4	5.4	7.5	149.5	111.0	1023.8	13	22	0	0	1	0	0	1	219	2.7	5.9	17.2
March	10.7	3.3	7.0	+0.2	73.3	0.2	7.1	7.8	93.4	17.1	1007.3	5	14	6	0	1	1	8	0	259	4.6	8.0	58.8
April	13.9	4.0	8.9	+0.3	61.7	0.2	9.4	9.0	153.6	26.5	1010.7	7	14	1	1	7	3	4	0	253	1.3	6.1	39.1
May	20.1	8.8	14.4	+2.4	66.5	6.1	14.6	12.6	187.4	0.0	1015.3	0	5	0	0	1	1	0	0	51	3.2	4.7	51.2
June	20.2	10.6	15.4	+0.4	54.6	8.0	17.6	15.6	215.2	0.0	1017.2	0	0	0	0	1	0	1	0	251	3.2	5.4	33.0
July	22.0	12.4	17.2	-0.2	70.2	9.3	18.4	16.9	192.4	0.0	1014.0	0	0	0	0	5	0	0	0	227	3.8	5.7	35.3
August	20.8	13.6	17.2	+0.1	76.0	11.2	18.6	17.5	109.5	0.0	1010.9	0	0	0	0	2	0	0	0	222	5.2	6.2	39.0
September	18.5	9.2	13.9	-0.4	56.9	6.7	16.5	16.8	119.7	0.0	1017.9	0	1	0	0	3	0	0	1	216	1.7	4.8	33.9
October	15.0	5.5	10.2	-0.6	51.0	2.4	12.7	14.3	147.2	13.2	1015.2	4	14	2	1	0	0	1	1	229	3.9	5.7	48.6
November	10.8	4.8	7.8	+0.7	67.7	1.7	9.3	11.3	55.6	18.0	1014.1	4	11	1	0	0	0	1	0	272	2.6	6.3	63.6
December	7.3	0.8	4.1	-1.3	32.1	-2.0	6.1	8.6	84.7	115.3	1019.0	12	22	0	0	0	0	0	2	268	1.3	5.4	37.9
Year	15.1	6.5	10.8	+0.5	716.8	3.5	11.9	12.2	1581.9	304.4	1014.8	46	114	12	2	22	5	18	7	236	2.6	6.1	519.3

Legend: Max/min/mean = Monthly mean of daily maximum/minimum/mean air temperature at 1.2 metres.
 Anom = Departure of mean temperature from climatic mean. Rain = monthly rainfall total.
 Grass min = Mean grass minimum temperature. 30cm/100cm = Mean earth temperature at 30 and 100 cm depth.
 Sun hrs = Hours of bright sunshine. Frost hrs = hours with air temperature below zero C. pp09 = Air pressure msl at 09 gm. t.
 Days with: Af = air frost. Gf = ground frost. Sf = snow falling. Sl = snow lying. Th = thunder. Ha = hail >5mm. Ic = small hail or ice.
 Fg = Fog at 09 gm. ddd ff = mean wind vector, degrees from true north, speed in knots. sp = mean scalar wind speed knots.
 Rain hrs = duration of measurable rain (excludes snowfall).

Appendix 5.

Wokingham annual climatic data for recent years.

Year	Mean max	Mean min	Mean	Anom	Hi max	Lo min	Rain mm	Grass min	30 cm 100 cm	Sun hrs	Frost hrs	pp09	Af	Sf Gf	Th Sl	Ic Ha	Fg	ddd	ff	sp				
1997	15.6	6.7	11.2	+1.2	30.6	-8.8	523	3.8	12.0	12.1	1702	440	1016.8	54	104	9	2	14	1	9	18	218	3.0	5.3
1998	15.1	7.1	11.1	+1.1	30.1	-4.0	720	4.1	12.0	12.2	1484	212	1015.6	35	96	7	0	19	5	7	9	225	3.0	5.8
1999	15.5	7.0	11.3	+1.3	30.8	-7.5	742	3.9	12.3	12.5	1700	224	1014.7	35	101	9	4	24	8	7	4	244	2.7	5.9
2000	15.0	7.0	11.0	+1.0	30.5	-7.1	872	3.8	12.0	12.2	1348	254	1013.9	33	104	7	4	15	3	10	14	246	3.1	5.9
2001	14.9	6.5	10.7	+0.7	31.8	-6.2	746	3.5	11.8	12.1	1489	468	1015.7	63	109	20	0	21	1	12	11	242	1.6	5.4
2002	15.5	7.2	11.4	+1.1	31.0	-7.8	853	4.5	12.4	12.5	1484	166	1014.6	26	70	2	0	17	0	13	11	222	2.1	5.8
2003	16.1	6.3	11.2	+0.9	36.9	-6.5	534	3.2	12.0	12.3	1906	458	1017.2	58	121	10	4	8	1	4	7	219	1.3	5.2
2004	15.3	7.1	11.2	+0.9	30.7	-6.2	612	4.0	12.1	12.3	1475	280	1016.1	40	92	13	2	3	4	15	4	241	2.3	5.4
2005	15.4	6.7	11.1	+0.8	31.1	-6.9	492	3.5	12.0	12.2	1610	388	1018.0	55	115	23	4	14	2	12	10	246	1.8	5.2
2006	15.9	7.6	11.7	+1.4	35.8	-6.7	665	4.7	12.2	12.3	1648	377	1016.0	45	82	17	1	20	4	12	10	232	2.2	5.8
2007	15.6	6.9	11.2	+0.9	28.4	-7.1	745	3.8	12.3	12.7	1684	295	1017.2	41	100	9	3	13	3	5	3	248	2.3	5.7
2008	15.1	6.5	10.8	+0.5	28.7	-7.0	717	3.5	11.9	12.2	1582	304	1014.8	46	114	12	2	22	5	18	7	236	2.6	6.1

Legend : See appendix 4.

Wokingham area decadal annual means for the last century

Decade Ending	Mean max	Mean min	Mean	Anom	Mean rain	Anom	Mean sun	Anom
1900	14.1	5.0	9.6	-0.7	600	-51	xx	
1910	13.7	5.1	9.4	-0.9	631	-20	xx	
1920	14.0	5.3	9.7	-0.6	700	+49	1588	+61
1930	14.2	5.3	9.8	-0.5	636	-15	1599	+72
1940	14.4	5.5	10.0	-0.3	641	-10	1527	0
1950	14.6	5.7	10.2	-0.1	616	-35	1572	+45
1960	14.1	5.7	9.9	-0.4	678	+27	1500	-27
1970	13.7	5.7	9.7	-0.6	686	+35	1487	-40
1980	14.0	5.8	9.9	-0.4	655	+4	1538	+11
1990	14.4	6.1	10.3	0.0	639	-12	1554	+27
2000	14.9	6.6	10.8	+0.5	660	+9	1569	+42

Anom = difference from current 1971 to 2000 climatological average.
Temperatures in degrees C, Rainfall in mm, Sunshine in hours.**Extreme values from the Wokingham climatological series.**

Highest annual mean maximum	16.1	in 2003
Lowest annual mean maximum	12.4	in 1888
Highest annual mean minimum	7.6	in 2006
Lowest annual mean minimum	3.9	in 1887
Highest annual mean temperature	11.7	in 2006
Lowest annual mean temperature	8.4	in 1887
Highest recorded temperature	36.9	on 10th August 2003
Lowest recorded temperature	-15.3	on 14th January 1982
Wettest year	952 mm	in 1903
Driest year	337 mm	in 1921
Highest daily rainfall	71.6 mm	on 20th September 1980
Sunniest year	2003	with 1906 hours
Dullest year	1958	with 1274 hours
Most days with snow falling	40	in 1917
Most days with snow lying	53	in 1963

Top ten since 1882

Warmest		Coldest		Wettest		Driest		Sunniest		Dullest		
Year	Deg C	Year	Deg C	Year	mm	Year	mm	Year	Mean	Year	Mean	
1	2006	11.7	1887	8.4	1903	952	1921	337	2003	5.2	1958	3.5
2	2002	11.4	1888	8.5	1951	887	1990	459	1990	5.1	1932	3.7
3	1999	11.3	1892	8.5	2000	872	1902	477	1989	5.1	1968	3.7
4	1990	11.3	1891	8.7	1960	857	1887	487	1911	5.1	1981	3.7
5	1989	11.3	1963	8.7	2002	853	1947	491	1949	5.0	1912	3.8
6	2007	11.2	1885	8.8	1916	842	2005	492	1929	5.0	1931	3.8
7	2004	11.2	1919	8.8	1974	837	1996	508	1921	5.0	1936	3.8
8	2003	11.2	1886	8.9	1915	815	1933	509	1959	4.9	1960	3.8
9	1997	11.2	1917	8.9	1927	814	1898	510	1933	4.9	1966	3.8
10	1995	11.2	1962	8.9	1968	793	1938	511	1995	4.8	1993	3.8