

WOKINGHAM METEOROLOGICAL DATA

Emmbrook, Wokingham, Berkshire. Annual Summary 2009

Temperature

	°C	°F	Anom	Rank in 128 years
Mean maximum	15.3	59.5	(+0.9)	15th highest
Mean minimum	6.5	43.7	(+0.3)	15th highest
Daily mean	10.9	51.6	(+0.6)	16th highest
Highest maximum	31.0	87.8		on 1st July
Lowest maximum	0.3	32.5		on 9th January
Highest minimum	17.9	64.2		on 1st July
Lowest minimum	-8.6	16.5		on 7th January
Mean grass minimum	3.3	37.9	(-0.1)	
Lowest grass minimum	-14.6	5.7		on 3rd February
Mean 30cm earth temp.	11.8	53.2	(+0.3)	
Highest 30cm	20.2	68.4		on 3rd July
Lowest 30cm	2.4	36.3		on 11th January
Mean 100cm earth temp	11.9	53.4		
Highest 100cm	17.3	63.1		22nd August
Lowest 100cm	5.3	41.5		on 17th February
Warmest month	August,	daily mean 17.6°C, 63.7°F		
Coollest month	January,	daily mean 3.1°C, 37.6°F		

Table 1. Temperature category for each month. (See note 2, page 4)

Category	Month
1. Very cool	-----
2. Cool	Jan, Dec
3. Normal	Feb, Jul
4. Warm	Mar, May, Jun, Aug, Sep, Oct
5. Very warm	Apr, Nov

Table 2. Number of days with max/min air temperature in given range.

Range, deg C	Number of days		Range, deg C	Number of days	
	Max	Min		Max	Min
-10.0 to -5.1	0	10	15.0 to 19.9	108	14
-5.0 to -0.1	0	44	20.0 to 24.9	73	0
0.0 to 4.9	27	77	25.0 to 29.9	18	0
5.0 to 9.9	52	130	30.0 to 34.9	2	0
10.0 to 14.9	85	90	35.0 to 39.9	0	0

Table 3. Monthly totals of Air Frost and Ground Frost.

	Jan	Feb	Mar	Apr	May	Jun	
Air frost	18 (+8)	11 (+1)	8 (+1)	0 (-4)	0 (-1)	0 (0)	
Ground frost	20 (+2)	14 (-4)	17 (0)	12 (-2)	3 (-4)	1 (-1)	
	Jul	Aug	Sep	Oct	Nov	Dec	Annual
Air frost	0 (0)	0 (0)	0 (0)	1 (0)	1 (-5)	15 (+6)	54 (+4)
Ground frost	0 (0)	0 (0)	0 (-3)	7 (-1)	8 (-7)	19 (+3)	101 (-19)

Date of: last spring air frost, 30th March ground frost, 4th June
 first autumn air frost, 18th October ground frost, 2nd October
 Frost free period, air 201 days, ground 119 days.
 Annual total of air frost duration: 455.0 hours
 Frostiest month January, 184.3 hours

[Difference from 1971-2000 average in brackets]

Temperature anomaly in deg C

Rainfall.

Total 642.6 mm 25.30 inches (99 %) 63rd highest in 128 years

Number of : Rain days 161 (+2) Wet days 121 (+9) Days => 5mm 36 (-9)

A rain day has at least 0.2 mm

A wet day has at least 1.0 mm

Highest daily fall to 9am: 25.0 mm on 9th February

Wettest month, November 138.7 mm 227 % of average
Driest month, September 17.2 mm 27 % of average

Duration of measurable rainfall; 460.7 hours Longest in a day; 21.3 hours on 9th February
Highest monthly duration; 83.8 hours in November Lowest ; 11.2 hours in September

Number of dry spells, (5 or more consecutive dry days): 15
Longest dry spell; 14 days, 16th to 29th September
Total number of : Dry days, 204 (-2) Days in dry spells, 123

Table 4. **Rainfall category for each month.**

Category	Month
1. Very wet	Nov, Dec
2. Wet	Feb
3. Normal	Jan, Mar, Jul, Oct
4. Dry	Apr, May, Jun, Aug, Sep
5. Very dry	-

(See note 2, page 4)

Table 4a **Rain rate, maximum daily, between given limits**

Rate mm/hr	Days	Rate mm/hr	Days
<10	121	50 to 100	10
10 to 25	20	100 to 250	0
25 to 50	17	>250	0
Highest rate	85 mm/hr on 15th and 24th July		

Table 5. **Distribution of rainfall duration.**

Hours	Days	Hours	Days	Hours	Days
0	171	6.1 to 9.0	16	18.1 to 21.0	0
0.1 to 1.0	71	9.1 to 12.0	5	21.1 to 24.0	1
1.1 to 3.0	55	12.1 to 15.0	1	Missing *	18
3.1 to 6.0	27	15.1 to 18.0	0	*Snow/ice/instrument failure	

Table 6. **Number of days with rainfall between given limits.**

Fall, mm	Days	Fall, mm	Days
0.0 to 0.1	204	10.0 to 19.9	21
0.2 to 0.9	40	20.0 to 29.9	1
1.0 to 4.9	85	30.0 to 39.9	0
5.0 to 9.9	14	> 39.9	0

Sunshine.

(Recorded on an electronic sunshine detector)

Total 1677.1 hours Daily mean 4.59 hours (109%)

Sunniest day 15.5 hours on 30th May
Number of days: Nil sun 43 =>12 hrs 18

Weather.

Number of days with:

Snow or sleet falling; 19 (+5)
Snow lying at 0900 GMT; 17 (+11)
Thunder heard; 14 (-2)
Hail; 8 (-4) =>5mm; 0 <5mm, 8
Fog at 0900 GMT; 7 (-8)

Air Pressure,

corrected to MSL.

Mean at 0900 GMT 1014.2 mabr (-1.8)
Absolute highest 1038.5 mbar on 11th September
Absolute lowest 967.6 mbar on 23rd January

[Difference from 1971-2000 average in brackets]

Wind**Table 7. Summary of monthly wind speed at 10 metres**

Month	Mean speed mph	Windiest day		Highest gust		0.5 mph or less hours
		mph	Date	mph	Date/time	
January	6.6	14.5	12th	52	17/2104	14.9
February	5.6	12.0	1st	39	1/1430	6.8
March	7.1	12.8	8th	46	8/1331	13.9
April	5.6	10.1	8th	37	8/0116	17.9
May	7.3	10.9	18th	37	16/1420	11.0
June	5.2	9.0	17th	35	17/1146	15.9
July	7.4	10.5	19th	33	19/1603	2.9
August	6.2	11.1	28th	38	28/1332	4.8
September	6.2	13.2	3rd	38	3/1123	20.0
October	5.3	12.1	3rd	33	3/1448	21.2
November	9.0	15.0	18th	59	14/1142	4.3
December	6.3	11.6	6th	41	17/1456	12.2
Year	6.5	15.0	18th November	59	14th November	150.3

Table 8. Summary of hourly mean wind direction. Number of hours with wind from given directions, in degrees from true north, summed over 30 degree segments.

	Direction											
	360 N	030 NNE	060 ENE	090 E	120 ESE	150 SSE	180 S	210 SSW	240 WSW	270 W	300 WNW	330 NNW
January	13	57	79	45	33	41	137	192	81	28	29	9
February	57	53	38	30	25	13	24	74	85	119	78	76
March	28	24	49	31	7	9	20	140	194	117	75	50
April	47	112	61	28	35	52	98	147	53	29	25	33
May	12	75	83	41	10	10	34	195	139	102	24	19
June	42	104	83	58	30	24	54	90	81	75	53	26
July	0	5	24	12	16	6	73	281	167	113	33	14
August	20	7	4	5	4	14	104	263	156	109	22	36
September	32	193	42	12	2	1	23	143	127	76	39	30
October	49	56	30	46	54	61	88	110	129	56	25	40
November	16	26	17	11	17	50	85	188	254	38	2	16
December	66	118	81	18	15	30	66	153	103	58	20	16
Year	382	830	591	337	248	311	806	1976	1569	920	425	365

Appendix 1.

Monthly statistics from the electronic sunshine detector, 2009.

Note:

Month	Total hours	Highest daily, hrs/date	Number of days with:					
			Nil	0.1 to 2.9	3.0 to 5.9	6.0 to 8.9	9.0 to 11.9	=>12.0 hrs
January	74.0	7.5 on 6th	7	13	8	3	0	0
February	73.8	9.4 on 21st	10	6	7	4	1	0
March	176.1	11.2 on 18th	1	9	6	6	9	0
April	188.6	12.8 on 21st	4	4	6	6	6	4
May	200.8	15.5 on 30th	1	7	7	8	3	5
June	208.1	15.5 on 2nd	1	8	4	6	4	7
July	157.0	11.7 on 2nd	1	10	8	8	4	0
August	176.6	13.4 on 19th	1	7	8	9	4	2
September	159.8	11.3 on 25th	1	9	8	6	6	0
October	102.0	10.3 on 8th	4	14	6	3	4	0
November	85.0	7.3 on 15th	4	15	4	7	0	0
December	75.3	7.3 on 20th	8	9	11	3	0	0
Year	1677.1	15.5	43	111	83	69	41	18

Appendix 2.

Monthly categories, quick look table, 2009.

Month	Temperature Category	Rainfall Category	Sunshine Category	Index	(see note 1)
January	2 Cool	3 Normal	5 Very Sunny	10	
February	3 Normal	2 Wet	3 Normal	8	
March	4 Mild	3 Normal	5 Very Sunny	12	
April	5 Very warm	4 Dry	4 Sunny	13	
May	4 Warm	4 Dry	3 Normal	11	
June	4 Warm	4 Dry	3 Normal	11	
July	3 Normal	3 Normal	2 Dull	8	
August	4 Warm	4 Dry	3 Normal	11	
September	4 Warm	4 Dry	3 Normal	11	
October	4 Warm	3 Normal	3 Normal	10	
November	5 Very mild	1 Very wet	3 Normal	9	
December	2 Cool	1 Very wet	4 Sunny	7	

Note 1). Index, on scale 3 to 15 between 'worst' and 'best' months.

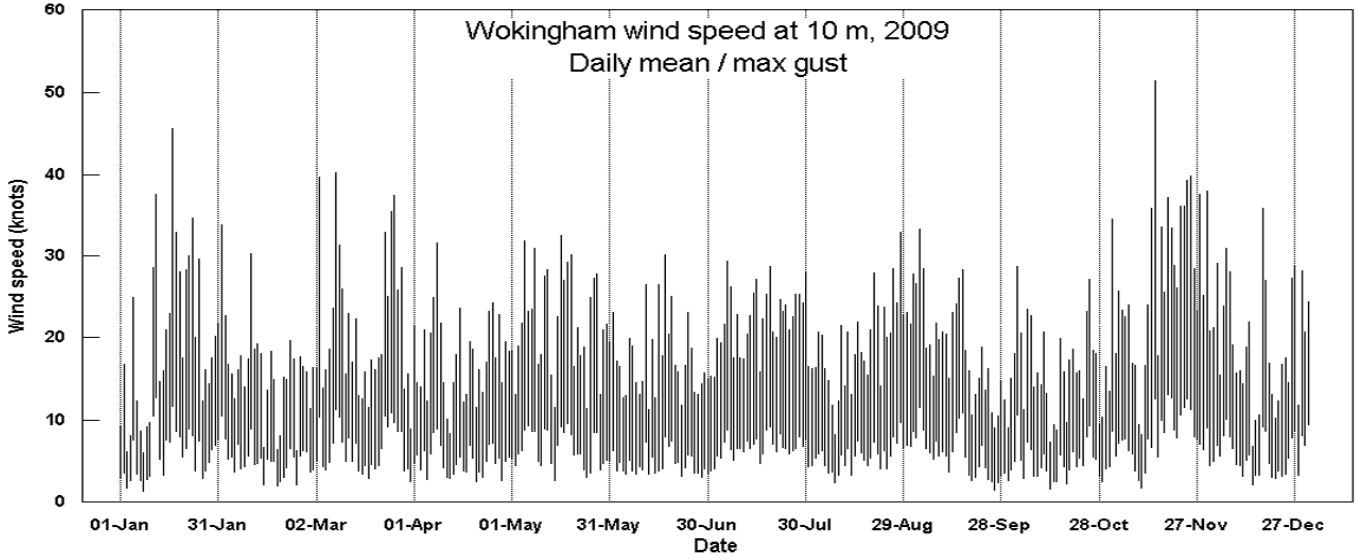
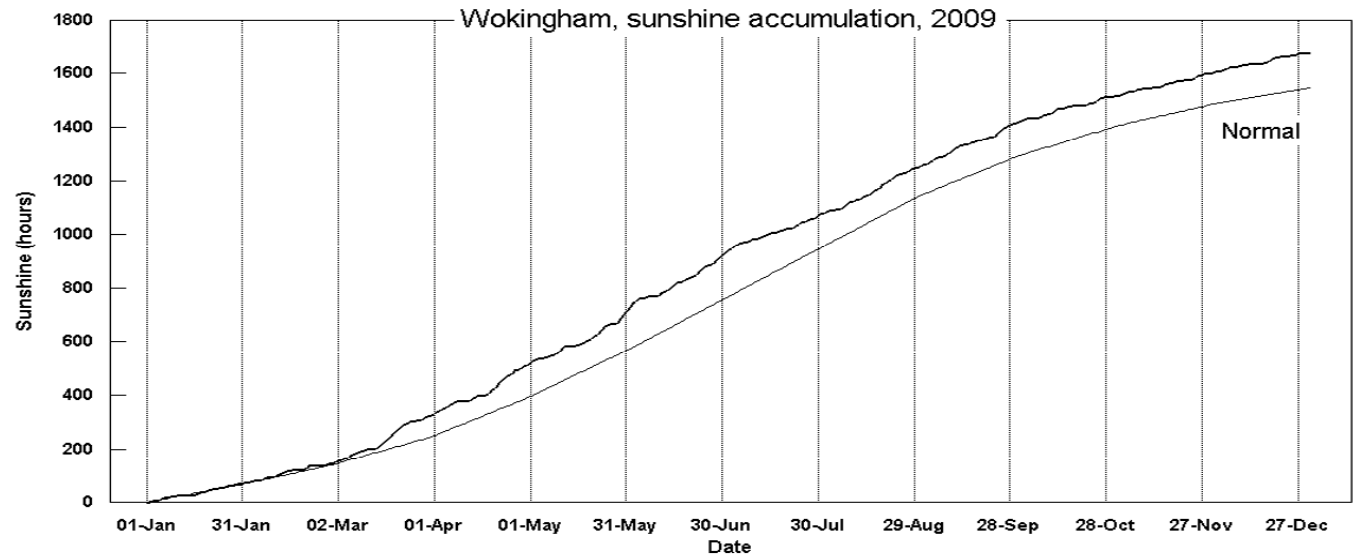
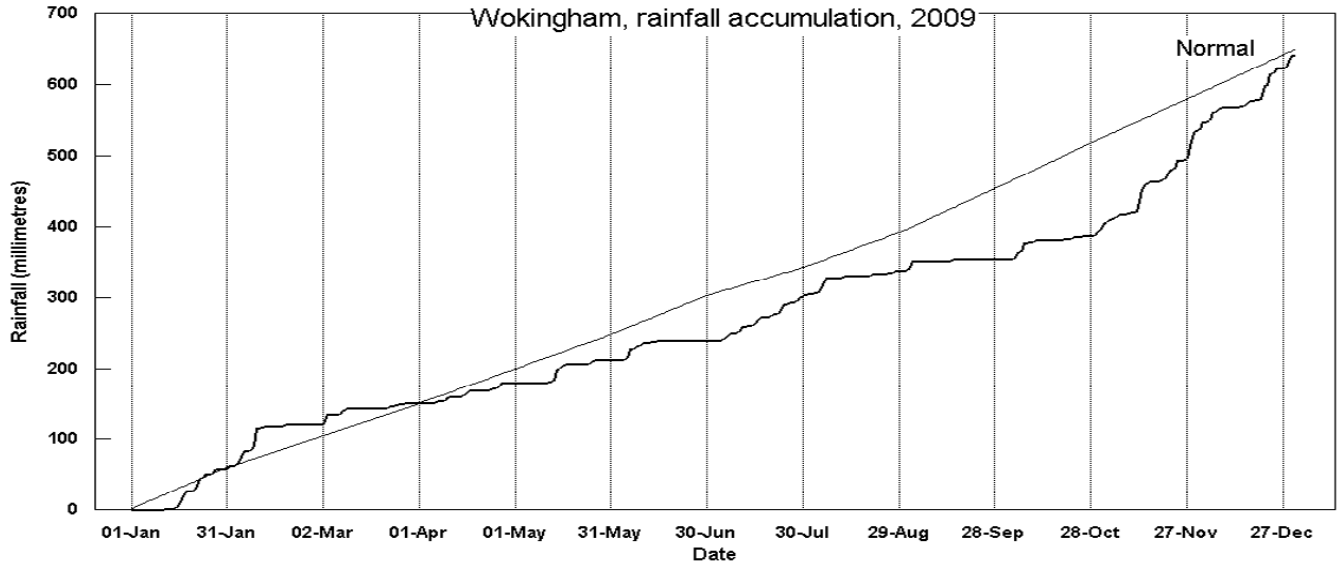
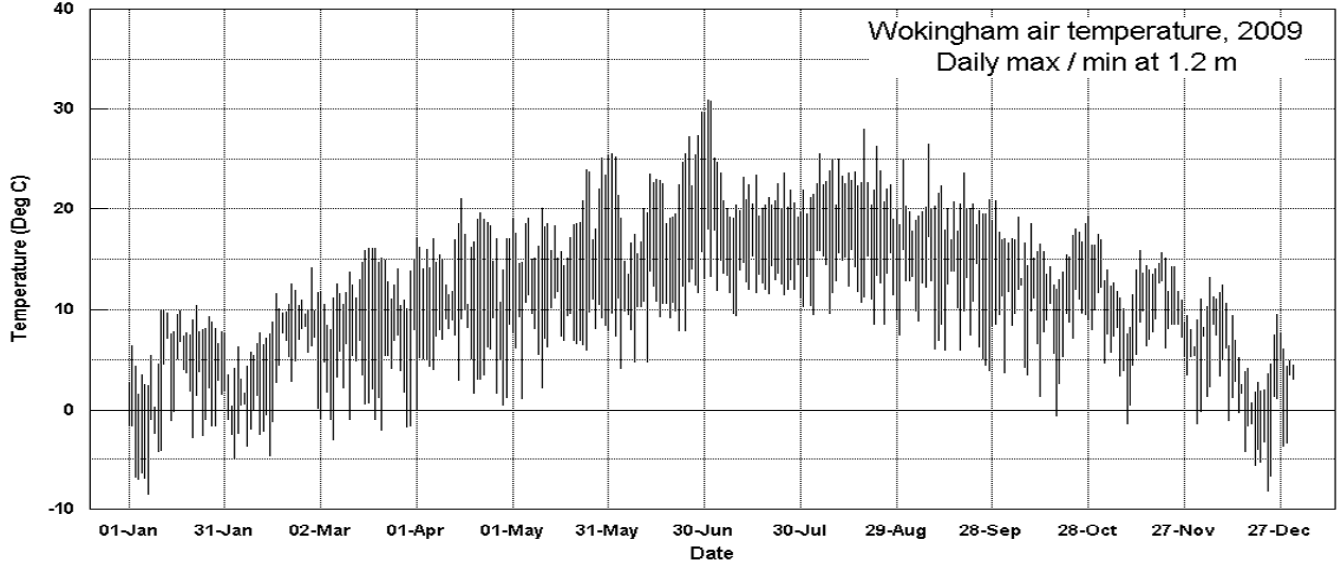
Note 2). Definition of categories used in Tables 1 and 4 and in Appendix 2: Category 1; the value lies within the worst 10% of ranked values for all years available. Category 2; between 10% and 30% above the worst value. Category 3; within 20% of the median value. Category 4; between 10% and 30% below the best value. Category 5; within 10% of the best value. In this context, best (worst) refer to above (below) normal temperature and sunshine, but below (above) normal rainfall. For temperature and rainfall, data since 1882 are considered, and for sunshine since 1908.

Summary of notable features in 2009.

- January.** The coldest January for 12 years. Rainfall near normal and very sunny. The highest max is lowest since 1979 and ranks 8th lowest since 1904. The lowest max is lowest since 1997. Most air frost since 1997, 90.7 hours above average. Lowest pressure lowest for the month since before 1976.
- February.** Wet with temperature and sunshine near normal. Lowest grass min (over snow) lowest since 1991. A daily rainfall of 25.0 mm is highest for the month since 1969. Much of the precipitation during the first week fell as snow, giving a max depth of 9 cm on the 2nd. This led to disruption of transport and closure of schools. The subsequent thaw and high daily fall on the 9th led to local flooding. Lowest mean wind speed for Feb since before 1988.
- March.** Mild and very sunny with rainfall below normal. Mean maximum 12th highest since 1882. Mean daily temperature range 2nd highest after 2003 since 1961. Period 15th to 22nd had a total of 84.4 hours of sunshine, 87% of the maximum possible.
- April.** Dry, sunny and very mild. Mean temperature 5th highest in 128 years. The lowest max is highest since 1960 and the lowest min is 6th highest in 106 years. Only the 7th April since 1904 to have no air frost. A sunny 7 day period gave a total of 74.3 hours.
- May.** Warm and dry with above average sunshine. Highest max is highest since 1999 and before that 1940. Over 200 hours of sunshine and a daily total of 15.5 hours most for May since before 1979. The month's highest pressure is highest for May since 1993.
- June.** Warm and dry with near normal sunshine. The mean daily temperature range is 2nd highest since 1996. Windiest day is equal calmest with 2001 in the past 22 years.
- July.** Dull with above normal rainfall and temperatures close to average. The lowest min is highest since 1994 and 3rd highest in 100 years. 11 fewer dry days than average and least since 1988. Windiest since 1993.
- August.** Warm and dry with below normal sunshine. There was an absence of hot weather. Dry for much of the month with 22 dry days.
- September.** Warm and dry with above average sunshine. The lowest max is 5th highest in 97 years and the highest min is 7th highest in the same period. 7 more dry days than average, and all but 5.1 mm of rain fell on one day. The mean pressure was highest since 1986.
- October.** Mild with rainfall and sunshine below normal. The lowest max is 7th highest in 97 years. The highest daily rainfall is lowest since 1999. Sunshine was poor, especially in the 9 day period to the 22nd which had 7 days with <15 % of the maximum. The month's highest gust is 2nd lowest in 22 years.
- November.** Very mild, very wet, windy, sunshine above normal. 2nd mildest since 1882 and mildest since 1994. 7th wettest in 128 years. Only 5 dry days, equal lowest with 2002 since before 1976. Mean wind speed equal highest with 1992 since before 1988. Wind gust of 59 mph highest for November in 22 years. The mean pressure and the absolute highest are lowest since 2000.
- December.** Cold and very wet with a significant snowy period. Mean maximum lowest since 1996. The lowest min is lowest since 1991. 6 more days with air frost than average. Number of days with at least 10 mm of rain is most since 1989. Most days with snow lying since 1981. Maximum snow depth most since 1986. The mean pressure is lowest since 2000.

Year Mild with Near Normal Rainfall and Above Normal Sunshine. Most Snow since 1986.

The mean temperature in 2009 is 0.1° above the 2008 value, but is 0.1° below the average for the past 20 years. In the longer-term, we have seen the decadal average annual temperature climb from 9.4° in 1910 to 11.1° in 2009, an increase of 1.7°. While some of this can be ascribed to creeping urbanisation in Wokingham, possible as much as half can be attributed to global warming. No temperature records were broken this year, although we did have the second mildest November in 128 years. The highest air temperature recorded, 31.0°, is close to the average, but it is the first time since 2006 that 30° has been exceeded. The lowest air temperature, -8.6°, is only 0.8° below the average, but it is 12 years since we had such a low value. Similarly, the lowest grass min of -14.6° this year is 1.3° below average and lowest since 1991. This has been the frostiest year since 2003, with 455 hours of air frost, 74.3 more than average. However, the number of days with ground frost is less than last year, and is 7 fewer than average. Rainfall was less than the preceding 3 years but is within 1 % of the average. The accumulated surplus of rainfall starting in January 1976 stands at 265 mm at the end of 2009, down from 414 mm in 2003. This can be compared with a deficit of 321 mm early in 1998. Thunder has been less frequent than in 2008, and there were 2 fewer days than average. Large hail was entirely absent for the first time since 2002, but the number of days with small hail was close to average. There were no exceptional rain rates, the highest being 85 mm/hr. The total duration of measurable rain is 56 hours less than average, but there were 18 days when this could not be measured due to snow/ice. Snow has been more frequent than in any year since 1986, and there were 11 more days with snow lying than average. It is worth noting that over the past 10 years we have only had an average of 2.4 days with lying snow. There were two notable snowy episodes, from the 2nd to the 8th of February, max depth 9cm, and from the 18th to the 26th December, max depth 11cm. The estimated soil moisture deficit reached a value of 255 mm in the autumn of 2009, the highest value since 2003 and before that, 1997. The highest 24 hour rainfall is lowest for 2 years, but the number of falls of 10 mm or more, 22, is 6 more than average. After a relatively poor year for sunshine in 2008, this year has seen an improvement, with 95 hours more sunshine. The number of sunless days, 43, is 14 fewer than average. This has not been a particularly windy year, with the mean speed lowest since 2005, and the highest daily mean of 15.0 mph lowest since before 1988. However, the year's highest gust of 59 mph is close to average. The frequency of wind directions between NW and E was 7% lower than average, while SW and W winds combined were 7.7% more frequent. The mean relative humidity was 76.3% and the lowest value was 22%. The mean water vapour content per kg of air was 6.4g at 0900 and 6.0g at 1500 GMT. The overall span of air pressure was 70.9 mbar compared with an average of 69.7 mbar.



Appendix 4.

Summary of observations at 0900 GMT

Month	Monthly means								Visibility statistics						
	Vis	Cl	TT	Td	RH	WS	WG	pp	TF	FO	VP	PO	MO	GO	EX
January	13.5	79	2.2	0.4	88	5.3	11	1011.1	1	3	4	10	6	5	2
February	13.3	84	3.9	1.5	85	4.8	10	1016.2	0	0	7	10	7	3	1
March	21.2	60	7.3	2.9	74	6.1	12	1016.0	0	0	2	8	8	10	3
April	15.9	75	11.2	6.3	73	5.5	11	1013.8	0	1	5	8	8	4	4
May	26.3	67	14.1	7.4	65	7.2	16	1018.5	0	0	2	4	8	11	6
June	28.2	66	17.0	9.2	61	4.6	11	1017.9	0	0	1	5	6	13	5
July	30.2	75	17.9	11.2	66	7.0	15	1012.6	0	0	0	2	5	21	3
August	28.5	77	18.3	12.7	71	6.1	13	1016.3	0	0	0	4	4	19	4
September	29.2	61	15.4	10.6	73	6.4	13	1022.9	0	0	1	2	8	12	7
October	18.0	75	11.9	9.4	85	4.5	10	1017.0	0	0	4	9	11	4	3
November	20.8	65	9.2	7.2	88	8.4	17	1001.5	1	0	4	4	11	6	4
December	20.9	69	2.7	1.5	92	5.2	11	1006.8	1	0	8	5	7	4	6
Year	22.2	71	11.0	6.7	77	5.9	13	1014.2	3	4	38	71	89	112	48

Summary of observations at 1500 GMT

Month	Monthly means								Visibility statistics						
	Vis	Cl	TT	Td	RH	WS	WG	pp	TF	FO	VP	PO	MO	GO	EX
January	20.8	73	5.2	0.6	73	6.4	14	1011.2	0	0	3	11	3	10	4
February	28.4	81	6.9	0.8	66	6.4	13	1015.6	0	0	2	6	5	9	6
March	29.1	76	11.6	1.9	52	8.5	18	1015.0	0	0	0	3	9	12	7
April	28.3	64	14.9	4.8	54	7.1	15	1012.8	0	0	2	5	4	12	7
May	37.1	70	17.1	6.3	51	8.3	18	1017.7	0	0	1	1	2	16	11
June	36.0	73	20.4	8.1	47	6.2	15	1016.7	0	0	0	1	3	15	11
July	33.2	71	20.3	9.7	53	8.6	19	1011.9	0	0	0	1	7	17	6
August	34.6	69	21.3	11.5	55	7.8	17	1015.4	0	0	1	0	5	16	9
September	38.5	77	18.8	9.9	57	7.2	16	1021.5	0	0	0	3	5	7	15
October	30.9	81	15.0	8.3	66	6.3	14	1015.9	0	0	0	3	6	16	6
November	29.1	73	10.9	6.3	74	9.2	20	1001.2	0	0	0	5	9	8	8
December	20.9	72	5.0	2.3	83	6.3	13	1006.2	0	0	6	7	8	5	5
Year	30.6	73	14.0	5.9	61	7.4	16	1013.4	0	0	15	46	66	143	95

Legend: Vis = visibility in km. Cl = cloud amount %. TT = air temperature, deg C. Td = Dew point, deg C.
 RH = relative humidity %. WS = wind speed at 10 metres, knots. WG = Highest gust in past hour, knots.
 pp = Air pressure at MSL, mbar. TF = thick fog, <210 m. FO = fog, 210 to 900 m. VP = very poor, 1 to 4 km
 PO = poor, 4.1 to 10 km. MO = moderate, 11 to 20 km. GO = good, 21 to 40 km. EX = excellent, >40 km.

Summary of monthly climatic data.

Year 2009

Month	Max	Min	Mean	Anom	Rain	Grass	30cm	100cm	Sun	Frost	pp09	Af	Sf	Th	Ic	Rain							
	C	C	C	C	mm	min	C	C	hrs	hrs	mbar	Gf	Sl	Ha	Fg	ddd	ff	sp	hrs				
January	6.8	-0.6	3.1	-1.4	59.6	-2.9	4.1	6.6	74.0	184.3	1011.1	18	20	3	1	0	0	1	4	189	2.9	5.7	58.4
February	7.9	1.7	4.8	+0.2	61.3	-1.3	4.5	5.9	73.8	96.0	1016.2	11	14	8	7	1	0	1	0	301	1.6	4.9	39.0
March	12.7	2.5	7.6	+0.8	30.1	-0.8	7.3	7.4	176.1	38.0	1016.0	8	17	0	0	0	0	4	0	256	3.8	6.2	20.7
April	16.0	5.3	10.7	+2.1	28.8	1.7	10.9	9.5	188.6	0.0	1013.8	0	12	0	0	2	0	1	1	177	1.2	4.8	35.9
May	18.5	7.9	13.2	+1.2	33.2	4.7	13.6	12.0	200.8	0.0	1018.5	0	3	0	0	0	0	0	0	231	2.6	6.3	26.9
June	21.7	10.1	15.9	+0.9	27.2	6.5	16.8	14.6	208.1	0.0	1017.9	0	1	0	0	3	0	0	0	282	0.5	4.5	27.5
July	21.9	12.9	17.4	-0.0	63.3	10.0	18.4	16.6	157.0	0.0	1012.6	0	0	0	0	5	0	0	0	224	5.1	6.4	40.1
August	22.7	12.6	17.6	+0.5	35.0	9.4	18.4	17.0	176.6	0.0	1016.3	0	0	0	0	1	0	0	0	223	4.3	5.4	21.2
September	20.0	9.8	14.9	+0.6	17.2	6.6	16.1	16.2	159.8	0.0	1022.9	0	0	0	0	0	0	0	0	295	1.4	5.4	11.2
October	16.1	8.0	12.1	+1.3	41.7	4.5	13.4	14.5	102.0	1.2	1017.0	1	7	0	0	0	0	0	0	216	1.6	4.6	32.6
November	12.3	6.6	9.5	+2.4	138.7	3.0	10.7	12.5	85.0	5.8	1001.5	1	8	1	0	1	0	0	1	217	5.9	7.8	83.8
December	6.7	0.2	3.5	-1.9	106.5	-2.1	6.5	9.4	75.3	129.7	1006.8	15	19	8	9	1	0	1	1	233	0.9	5.5	63.4
Year	15.3	6.5	10.9	+0.6	642.6	3.3	11.8	11.9	1677.1	455.0	1014.2	54	101	19	17	14	0	8	7	241	0.5	5.6	460.7

Legend: Max/min/mean = Monthly mean of daily maximum/minimum/mean air temperature at 1.2 metres.
 Anom = Departure of mean temperature from climatic mean. Rain = monthly rainfall total.
 Grass min = Mean grass minimum temperature. 30cm/100cm = Mean earth temperature at 30 and 100 cm depth.
 Sun hrs = Hours of bright sunshine. Frost hrs = hours with air temperature below zero C. pp09 = Air pressure msl at 09 gm.
 Days with: Af = air frost. Gf = ground frost. Sf = snow falling. Sl = snow lying. Th = thunder. Ha = hail >5mm. Ic = small hail or ice.
 Fg = Fog at 09 gm. ddd ff = mean wind vector, degrees from true north, speed in knots. sp = mean scalar wind speed knots.
 Rain hrs = duration of measurable rain (excludes snowfall).

Appendix 5.

Wokingham annual climatic data for recent years.

Year	Mean max	Mean min	Mean	Anom	Hi max	Lo min	Rain mm	Grass min	30 cm	100 cm	Sun hrs	Frost hrs	pp09	Af	Sf Gf	Th Sl	Ic Ha	Fg	ddd	ff	sp			
1998	15.1	7.1	11.1	+1.1	30.1	-4.0	720	4.1	12.0	12.2	1484	212	1015.6	35	96	7	0	19	5	7	9	225	3.0	5.8
1999	15.5	7.0	11.3	+1.3	30.8	-7.5	742	3.9	12.3	12.5	1700	224	1014.7	35	101	9	4	24	8	7	4	244	2.7	5.9
2000	15.0	7.0	11.0	+1.0	30.5	-7.1	872	3.8	12.0	12.2	1348	254	1013.9	33	104	7	4	15	3	10	14	246	3.1	5.9
2001	14.9	6.5	10.7	+0.7	31.8	-6.2	746	3.5	11.8	12.1	1489	468	1015.7	63	109	20	0	21	1	12	11	242	1.6	5.4
2002	15.5	7.2	11.4	+1.1	31.0	-7.8	853	4.5	12.4	12.5	1484	166	1014.6	26	70	2	0	17	0	13	11	222	2.1	5.8
2003	16.1	6.3	11.2	+0.9	36.9	-6.5	534	3.2	12.0	12.3	1906	458	1017.2	58	121	10	4	8	1	4	7	219	1.3	5.2
2004	15.3	7.1	11.2	+0.9	30.7	-6.2	612	4.0	12.1	12.3	1475	280	1016.1	40	92	13	2	3	4	15	4	241	2.3	5.4
2005	15.4	6.7	11.1	+0.8	31.1	-6.9	492	3.5	12.0	12.2	1610	388	1018.0	55	115	23	4	14	2	12	10	246	1.8	5.2
2006	15.9	7.6	11.7	+1.4	35.8	-6.7	665	4.7	12.2	12.3	1648	377	1016.0	45	82	17	1	20	4	12	10	232	2.2	5.8
2007	15.6	6.9	11.2	+0.9	28.4	-7.1	745	3.8	12.3	12.7	1684	295	1017.2	41	100	9	3	13	3	5	3	248	2.3	5.7
2008	15.1	6.5	10.8	+0.5	28.7	-7.0	717	3.5	11.9	12.2	1582	304	1014.8	46	114	12	2	22	5	18	7	236	2.6	6.1
2009	15.3	6.5	10.9	+0.6	31.0	-8.6	643	3.3	11.8	11.9	1677	455	1014.2	54	101	19	17	14	0	8	7	241	0.5	5.6

Legend : See appendix 4.

Wokingham area decadal annual means for the last century

Decade Ending	Mean max	Mean min	Mean	Anom	Mean rain	Anom	Mean sun	Anom
1900	14.1	5.0	9.6	-0.7	600	-51	xx	
1910	13.7	5.1	9.4	-0.9	631	-20	xx	
1920	14.0	5.3	9.7	-0.6	700	+49	1588	+61
1930	14.2	5.3	9.8	-0.5	636	-15	1599	+72
1940	14.4	5.5	10.0	-0.3	641	-10	1527	0
1950	14.6	5.7	10.2	-0.1	616	-35	1572	+45
1960	14.1	5.7	9.9	-0.4	678	+27	1500	-27
1970	13.7	5.7	9.7	-0.6	686	+35	1487	-40
1980	14.0	5.8	9.9	-0.4	655	+4	1538	+11
1990	14.4	6.1	10.3	0.0	639	-12	1554	+27
2000	14.9	6.6	10.8	+0.5	660	+9	1569	+42

Anom = difference from current 1971 to 2000 climatological average.
 Temperatures in degrees C, Rainfall in mm, Sunshine in hours.

Extreme values from the Wokingham climatological series.

Highest annual mean maximum	16.1	in 2003
Lowest annual mean maximum	12.4	in 1888
Highest annual mean minimum	7.6	in 2006
Lowest annual mean minimum	3.9	in 1887
Highest annual mean temperature	11.7	in 2006
Lowest annual mean temperature	8.4	in 1887
Highest recorded temperature	36.9	on 10th August 2003
Lowest recorded temperature	-15.3	on 14th January 1982
Wettest year	952 mm	in 1903
Driest year	337 mm	in 1921
Highest daily rainfall	71.6 mm	on 20th September 1980
Sunniest year	2003 with 1906 hours	
Dullest year	1958 with 1274 hours	
Most days with snow falling	40	in 1917
Most days with snow lying	53	in 1963

Top ten since 1882

Warmest		Coldest		Wettest		Driest		Sunniest		Dullest		
Year	Deg C	Year	Deg C	Year	mm	Year	mm	Year	Mean	Year	Mean	
1	2006	11.7	1887	8.4	1903	952	1921	337	2003	5.2	1958	3.5
2	2002	11.4	1888	8.5	1951	887	1990	459	1990	5.1	1932	3.7
3	1999	11.3	1892	8.5	2000	872	1902	477	1989	5.1	1968	3.7
4	1990	11.3	1891	8.7	1960	857	1887	487	1911	5.1	1981	3.7
5	1989	11.3	1963	8.7	2002	853	1947	491	1949	5.0	1912	3.8
6	2007	11.2	1885	8.8	1916	842	2005	492	1929	5.0	1931	3.8
7	2004	11.2	1919	8.8	1974	837	1996	508	1921	5.0	1936	3.8
8	2003	11.2	1886	8.9	1915	815	1933	509	1959	4.9	1960	3.8
9	1997	11.2	1917	8.9	1927	814	1898	510	1933	4.9	1966	3.8
10	1995	11.2	1962	8.9	1968	793	1938	511	1995	4.8	1993	3.8