

WOKINGHAM METEOROLOGICAL DATA

Lat 51.425 N, Long 0.853 W, NGR (SU) 798701

Altitude 45 m ASL. Emmbrook, Wokingham, Berkshire.

Annual Summary 2014

Temperature

	°C	°F	Anom	Rank in 133 years
Mean maximum	16.0	60.8	(+1.1)	2nd highest
Mean minimum	7.1	44.8	(+0.6)	3rd highest
Daily mean	11.6	52.9	(+0.9)	2nd highest
Highest maximum	29.2	84.6		on 24th July
Lowest maximum	3.9	39.0		on 30th December
Highest minimum	17.9	64.2		on 19th July
Lowest minimum	-6.5	20.3		on 31st December
Mean grass minimum	4.0	39.2	(+0.6)	
Lowest grass minimum	-10.4	13.3		on 29th December
Mean 30cm earth temp.	12.9	55.2	(+1.1)	
Highest 30cm	21.7	71.1		on 27th July
Lowest 30cm	4.1	39.4		on 31st December
Mean 100cm earth temp	12.8	55.0		
Highest 100cm	19.0	66.2		on 3rd August
Lowest 100cm	7.0	44.6		on 20th February
Warmest month	July,		daily mean 18.9°C,	66.0°F
Coollest month	December,		daily mean 5.3°C,	41.5°F

Table 1. Temperature category for each month. (See note 2, page 4)

Category	Month
1. Very cool	-
2. Cool	-
3. Normal	Aug, Dec
4. Warm	Jan, Mar, May, Jun
5. Very warm	Feb, Apr, Jul, Sep, Oct, Nov

Table 2. Number of days with max/min air temperature in given range.

Range, deg C	Number of days		Range, deg C	Number of days	
	Max	Min		Max	Min
-15.0 to -10.1	0	0	10.0 to 14.9	97	110
-10.0 to - 5.1	0	2	15.0 to 19.9	97	14
-5.0 to -0.1	0	31	20.0 to 24.9	84	0
0.0 to 4.9	4	93	25.0 to 29.9	21	0
5.0 to 9.9	62	115	30.0 to 34.9	0	0

Table 3. Monthly totals of Air Frost and Ground Frost.

	Jan	Feb	Mar	Apr	May	Jun	
Air frost	8 (-2)	0 (-10)	7 (0)	2 (-2)	1 (0)	0 (0)	
Ground frost	10 (-8)	14 (-3)	19 (+3)	14 (0)	3 (-2)	0 (-1)	
	Jul	Aug	Sep	Oct	Nov	Dec	Annual
Air frost	0 (0)	0 (0)	0 (0)	0 (-2)	3 (-3)	12 (+1)	33 (-17)
Ground frost	0 (0)	3 (+3)	3 (+1)	1 (-6)	12 (-1)	20 (+4)	99 (-9)

Date of: last spring air frost, 3rd May ground frost, 5th May
 first autumn air frost, 6th November ground frost, 20th August
 Frost free period, air 186 days, (-3) ground 106 days, (-16).
 Annual total of air frost duration: 195.2 hours (-199.7)
 Frostiest month December, 111.6 hours

[Difference from 1981-2010 average in brackets]

Temperature anomaly in deg C

Rainfall.

Total **883.4** mm 34.78 inches (136 %) 3rd highest in 133 years

Number of : Rain days 176 (+16) Wet days 149 (+36) Days => 5mm 61 (+16)

A rain day has at least 0.2 mm

A wet day has at least 1.0 mm

Highest daily fall to 9am: 38.2 mm on 13th June

Wettest month, January 153.9 mm 248 % of average
Driest month, September 10.1 mm 19 % of average

Duration of measurable rainfall; 598.5hours Longest in a day; 17.9 hours on 6th February
Highest monthly duration; 117.3 hours in January Lowest ; 7.8 hours in September

Number of dry spells, (5 or more consecutive dry days): 10
Longest dry spell; 16 days, 2nd to 17th September
Total number of : Dry days, 189 (-16) Days in dry spells, 89

Table 4. **Rainfall category for each month.**

Category	Month
1. Very wet	Jan, Feb
2. Wet	Apr, May, Jun, Aug, Oct, Nov
3. Normal	Mar
4. Dry	Jul, Dec
5. Very dry	Sep

(See note 2, page 4)

Table 4a **Rain rate, maximum daily, between given limits**

Rate mm/hr	Days	Rate mm/hr	Days
<10	111	50 to 100	12
10 to 25	31	100 to 250	3
25 to 50	25	>250	1
		Missing *	6
Highest rate	252 mm/hr on the 13th June		

Table 5. **Distribution of measurable rainfall duration.**

Hours	Days	Hours	Days	Hours	Days
0	164	6.1 to 9.0	15	18.1 to 21.0	0
0.1 to 1.0	66	9.1 to 12.0	7	21.1 to 24.0	0
1.1 to 3.0	66	12.1 to 15.0	3	Missing *	0
3.1 to 6.0	42	15.1 to 18.0	2	*Not available due to snow/ice	

Table 6. **Number of days with rainfall between given limits.**

Fall, mm	Days	Fall, mm	Days
0.0 to 0.1	189	10.0 to 19.9	20
0.2 to 0.9	27	20.0 to 29.9	3
1.0 to 4.9	88	30.0 to 39.9	1
5.0 to 9.9	37	> 39.9	0

Sunshine.

(Recorded on an electronic sunshine detector)

Total **1666.3** hours Daily mean **4.57** hours (107 %)

Sunniest day 15.2 hours on the 3rd July
Number of days: Nil sun 41 (-16) =>12 hrs 22

Weather.

Number of days with:

Snow or sleet falling; 0 (-15)
Snow lying at 0900 GMT; 0 (-6)
Thunder heard; 23 (+7)
Hail; 18 (+6) =>5mm; 3 (0) <5mm, 15 (+6)
Fog at 0900 GMT; 6 (-5)

Air Pressure,

corrected to MSL.

Mean at 0900 GMT **1012.8** mabr (-3.2)
Absolute highest 1043.0 mbar on 29th December
Absolute lowest 973.2 mbar on 14th February

[Difference from 1981-2010 average in brackets]

Wind**Table 7. Summary of monthly wind speed at 10 metres**

Month	Mean speed mph	Windiest day		Highest gust		Calm 0.5 mph or less hours
		mph	Date	mph	Date/time (GMT)	
January	8.2	15.6	6th	51	25/1623	6.9
February	10.7	17.5	15th	63	15/0322	0.1
March	6.7	13.0	20th	38	20/1403	10.9
April	5.9	11.5	6th	33	26/1541	9.0
May	6.3	13.6	10th	46	10/1622	19.6
June	5.2	8.6	17th	28	10/1539	15.1
July	5.6	9.2	9th	30	25/1335	12.8
August	6.6	10.7	10th	38	10/1718	4.1
September	3.8	6.7	21st	25	24/1406	37.1
October	6.7	13.6	21st	48	21/1341	6.6
November	5.2	10.4	7th	37	10/2217	12.1
December	8.2	15.0	22nd	43	27/0127	3.2
Year	6.6	17.5	15th February	63	15th February	137.5

Table 8. Summary of hourly mean wind direction. Number of hours with wind from given directions, in degrees from true north, summed over 30 degree segments.

	Direction											
	360 N	030 NNE	060 ENE	090 E	120 ESE	150 SSE	180 S	210 SSW	240 WSW	270 W	300 WNW	330 NNW
January	3	21	20	21	9	68	126	271	141	49	10	5
February	6	4	5	4	14	44	127	231	199	29	5	4
March	20	51	78	28	38	51	56	146	146	77	34	19
April	46	83	96	53	16	23	57	135	63	82	26	40
May	53	76	59	26	26	38	82	116	125	66	32	45
June	72	141	69	39	29	9	43	113	103	52	14	36
July	70	67	55	36	8	9	18	121	119	55	68	118
August	9	10	21	10	23	25	49	168	223	126	65	15
September	45	150	163	65	13	14	31	88	73	27	15	36
October	8	34	11	16	12	50	125	255	132	57	33	11
November	40	62	117	56	39	55	86	143	41	12	28	41
December	65	49	9	0	0	5	26	171	273	83	34	29
Year	437	748	703	354	227	391	826	1958	1638	715	364	399

Appendix 1.

Monthly statistics from the electronic sunshine detector, 2014.

Note:

Month	Total hours	Highest daily, hrs/date	Number of days with:					
			Nil	0.1 to 2.9	3.0 to 5.9	6.0 to 8.9	9.0 to 11.9	=>12.0 hrs
January	89.3	7.8 on 19th	7	8	13	3	0	0
February	99.7	9.1 on 22nd	2	12	7	6	1	0
March	154.0	11.5 on 16th	0	11	6	11	3	0
April	141.0	13.5 on 15th	2	12	5	6	1	4
May	173.2	14.4 on 18th	5	9	3	5	3	6
June	224.9	14.7 on 10th	0	4	7	7	7	5
July	250.3	15.2 on 3rd	0	1	10	7	8	5
August	163.3	12.3 on 3rd	2	6	11	8	2	2
September	120.9	11.0 on 9th	2	9	12	4	3	0
October	101.5	9.0 on 28th	7	10	7	6	1	0
November	58.6	6.1 on 24th	7	12	10	1	0	0
December	89.6	7.3 on 6th	7	12	6	6	0	0
Year	1666.3	15.2	41	106	97	70	29	22

Appendix 2.

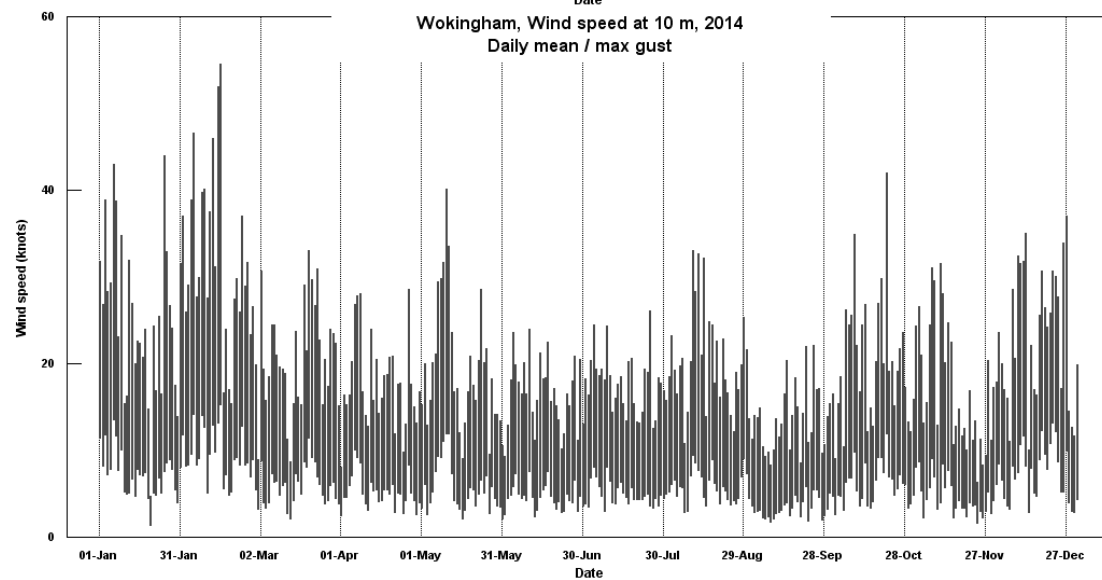
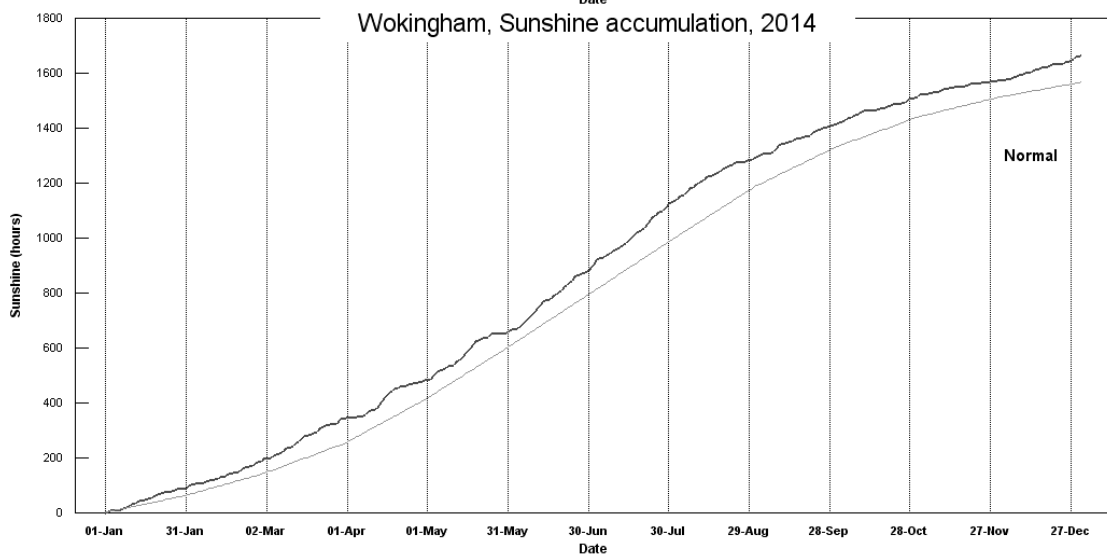
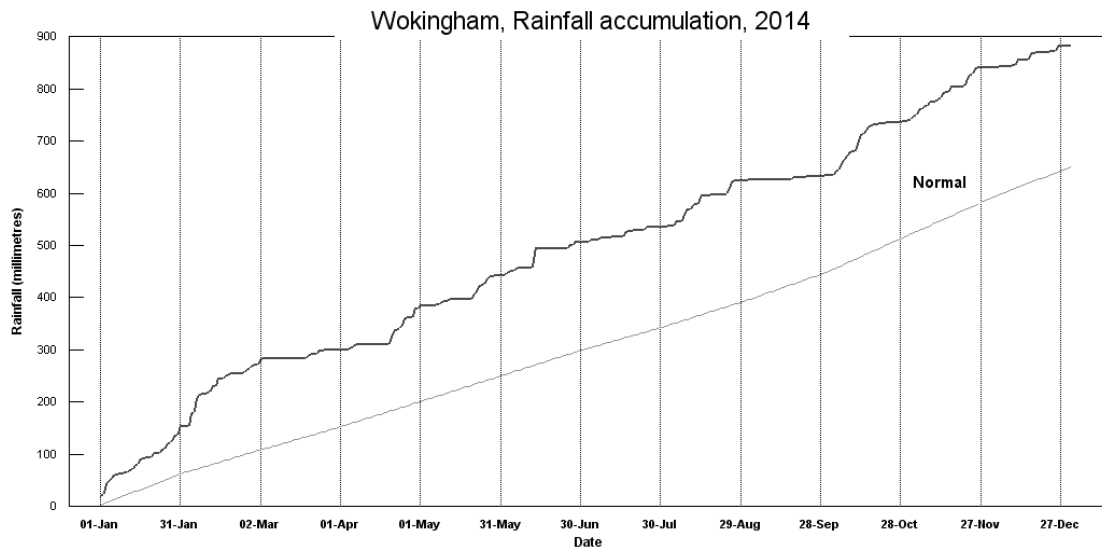
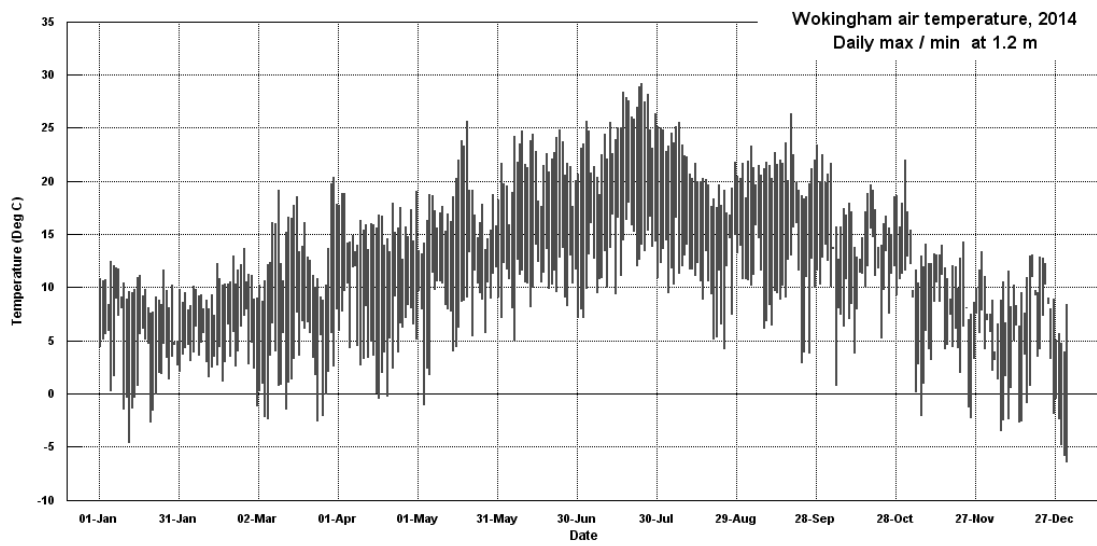
Monthly categories, quick look table, 2014.

Month	Temperature Category	Rainfall Category	Sunshine Category	Index	(see note 1)
January	4 Mild	1 Very wet	5 Very sunny	10	
February	5 Very mild	1 Very wet	5 Very sunny	11	
March	4 Mild	3 Normal	4 Sunny	11	
April	5 Very mild	2 Wet	3 Normal	10	
May	4 Mild	2 Wet	2 Dull	8	
June	4 Mild	2 Wet	3 Normal	9	
July	5 Very mild	4 Dry	4 Sunny	13	
August	3 Normal	2 Wet	2 Dull	7	
September	5 Very mild	5 Very dry	2 Dull	12	
October	5 Very mild	2 Wet	3 Normal	10	
November	5 Very mild	2 Wet	3 Normal	10	
December	3 Normal	4 Dry	5 Very sunny	12	

Note 1). Index, on scale 3 to 15 between 'worst' and 'best' months.

Note 2). Definition of categories used in Tables 1 and 4 and in Appendix 2: Category 1; the value lies within the worst 10% of ranked values for all years available. Category 2; between 10% and 30% above the worst value. Category 3; within 20% of the median value. Category 4; between 10% and 30% below the best value. Category 5; within 10% of the best value. In this context, best (worst) refer to above (below) normal temperature and sunshine, but below (above) normal rainfall. For temperature and rainfall, data since 1882 are considered, and for sunshine since 1908.

Annual Summary 2014	
Appendix 3	Page 5
	Summary of notable features in 2014
January	Extremely wet, but also mild and sunny. A new record rainfall since before 1882, 153.9 mm, 15.7 mm more than the previous highest in 1995. Rainfall duration is twice the average. Mean maximum temperature 10 th highest in 133 years. The mean air pressure is lowest since before 1976.
February	Very wet, very mild, quite sunny and very windy at times. The mean temperature is 8 th highest in the past 133 years. Only the 2nd February without an air frost since before 1976. The lowest maximum is 4 th highest in 102 years and the highest minimum is equal highest with 1961 in the past 111 years. 2 nd wettest February after 1951 in the past 133 years. Flooding was a problem in some places locally. Windiest since 2002, and gusts of 63 mph are the highest since 1990. Mean pressure is lowest for any month since before 1976.
March	Mild, especially by day, sunny and drier than normal. The mean maximum is 7 th highest in 133 years. Warm days and cool nights resulted in the 3 rd highest diurnal mean temperature range in 39 years. The lowest maximum is 8 th highest in 102 years. After a very wet winter there was a welcome 14 day dry spell after the 3 rd . 1 st March since 1995 to have no nil sun days.
April	Wet and very mild with sunshine below average. The mean temperature is 9 th highest in 133 years. Lowest maximum is 2 nd highest in the past 102 years, and the highest minimum is 7 th highest in the same period. 2 nd wettest in the past 10 years.
May	Mild and wet with below average sunshine. The mean earth temperature at 30cm depth is 2 nd highest in 35 years. 46 mph wind gust on the 10 th is 2 nd highest in May in 27 years.
June	Warm with above average sunshine and rainfall despite long dry episodes. The highest maximum is lowest since 1991 and the highest minimum lowest since 1995. The mean earth temperature at 30cm depth is highest since before 1980. Torrential downpour and thunderstorm on the 13 th /14 th gave 38.2 mm in under 6 hours, including 15.7 mm in one hour, and a maximum rainfall rate of 252 mm/hr. There was local flooding and lightning damage to property.
July	Dry, sunny and very warm. Mean temperature 10 th highest in 133 years. Rainfall 2 nd lowest since 1998. Thunder more frequent than average with a spectacular lightning display overnight on the 18 th .
August	Wet and rather dull with temperatures well below average. The mean temperature lowest since 1993. The lowest minimum is lowest since 1979. Ground frost occurred on the 20 th , 21 st and 24 th , the former 37 days earlier than average, and in the past 35 years only one other August has had a ground frost. Rainfall 4 th highest in the past 39 years. The number of days with 5 mm or more is equal highest in the past 39 years.
September	Very warm, very dry, very calm, but dull. Mean temperature 9 th highest in 133 years. Lowest maximum is 2 nd highest in 102 years. Rainfall total 6 th lowest in 133 years and 2 nd lowest since 1959. Most dry days since 1986. Sunshine lowest since 2008, and only 6 days had more than 50% of the maximum. The mean wind speed and highest gust are lowest for the month since before 1988, and the mean speed is also lowest for any month in that period.
October	Wet and very mild with below normal sunshine. The mean temperature is 5 th highest in 133 years. A maximum of 22.0° on the 31 st is probably the latest ever recorded for such a high value. The lowest maximum is 6 th highest, and the highest minimum 8 th highest, in the past 102 years. Mean earth temperature at 30cm depth 2 nd highest in the past 35 years.
November	Wet and very mild with below normal sunshine. The mean temperature 11 th highest in the past 133 years. Dull with only 4 days having over 50% of the maximum sunshine. The mean relative humidity is highest for any month since before 1998.
December	Dry with near normal temperature and very sunny. 81% of the month's rainfall fell on just 3 days and there were 5 more dry days than average. Sunniest since 2001, 37.5 hours above average and 31 hours more than in November this year.
Year	<p style="text-align: center;">Near Record High Temperature and Rainfall, and Quite Sunny.</p> <p>2014 has been an exceptional year for both temperature and rainfall. Temperature: The mean maximum is the 2nd highest in 133 years, and only 0.1° below the record set in 2003. Similarly the mean temperature is 2nd highest, and 01.° below the record set in 2006. Of the 16 warmest years in the record, all have occurred in the past 26 years. No year before 1989 has had a mean temperature above 11.0°, but the record now stands at 11.7°. The long-term median is 9.9°, but only one year this millennium has had a mean below this. This year's highest temperature of 29.2° is 1.1° below the median but is only lowest since 2011. The lowest maximum of 3.9° is 4.2° above the median and is a new record, exceeding the previous highest in 2007 by 0.3°. The highest min is 0.8° above the median, and the year's lowest temperature, -6.5°, is 1.3° above the median. The mean daily temperature range of 8.9° is 0.5°, or 1 standard deviation, above average. The mean grass minimum is highest since 2006 and the lowest grass min is 2.9° above average, and equal highest with 2011 since 1998. The mean earth temperature at 30 cm depth is highest in the past 35 years, and is 2 standard deviations above average. The duration of air frost is lowest since 2011 and before that 2002, while the number of days with air frost is lowest since 2002. Rainfall: A very wet year, with a total only exceeded twice in the past 133 years, in 1951 and 1903. 8 months of this year were in the wet or very wet category. The year got off to a soggy start with January having 248 % of the average rainfall, and February 279 %, leading to local flooding. There was some respite in March before three more wet months. In fact, July, September and December are the only months in the dry or very dry categories this year. The number of dry days is equal lowest with 2012 since 2002, but the number of wet days (days with 1.0 mm or more), is most in the past 102 years. Rainfall duration is 115 % of normal, but is less than in 2012 and 2002. Complete calendar years without snow or sleet are very rare, this being the first example in the past 107 years. Hail was more frequent than average, but 5 days less than the record. Similarly thunder was very frequent, 4th highest in 106 years, but 3 days less than the record in 1983. January was the wettest month with 153.9 mm and September the driest with 10.1 mm. Estimated soil moisture deficit reached a maximum of 138 mm early in October this year, compared with a median value for the past 39 years of 187 mm. A seasonal index of stress for unirrigated shallow rooted plants was 0 in Spring this year and 369 in Summer, compared with a 30 year average of 61 and 652 respectively. Sunshine: This has been a sunny year overall, but the total is slightly less than in 2007 and 2009, and well short of the record sunny year, 2003. July was the sunniest month with 250.3 hours and November the dullest with 58.6 hours. The total number of days with nil sun is lowest since 2007. There were several runs of 4 or more consecutive sunny days the best being the 15th to 19th May, when 6 days saw the sun for 71.4 hours, a mean of 11.9 hours per day. Wind: This has not been a particularly windy year, with the mean speed 0.2 mph below average. The total run of wind for the year is 92536 km, a mean of 253.52 km/day. Compared with the 27 year average, SW winds were 5.2 % more frequent, at the expense of NW, down 2.4 %, W down 1.2 % and E down 1.6 %, all other directions being within 1 % of average. Humidity: The overall mean relative humidity for 2014 is 79.7 %, and the lowest value recorded is 23 % on the 29th March. The mean water vapour content per kg of air was 7.0 g at 0900 GMT and 6.7 g at 1500 GMT. Pressure: The annual mean air pressure this year is 3.2 mbar below average and is lowest since before 1976. The total span of pressure was 69.8 mbar, 5.9 mbar above average.</p> <p>© Bernard Burton. 6th January 2015</p>



Appendix 4.

Summary of observations at 0900 GMT

Month	Monthly means								Visibility statistics						
	Vis	Cld	TT	Td	RH	WS	WG	pp	TF	FO	VP	PO	MO	GO	EX
January	19.6	66	5.1	3.6	90	6.5	13	1002.0	1	0	3	7	9	5	6
February	18.0	71	6.6	3.8	83	9.1	18	998.3	0	0	0	5	12	9	2
March	16.8	74	7.9	4.9	82	5.7	11	1016.5	2	0	1	10	7	7	4
April	17.0	72	11.2	7.0	77	6.3	13	1015.1	0	1	3	8	5	11	2
May	26.1	72	14.0	8.4	70	6.4	14	1015.1	0	0	1	3	11	7	9
June	34.9	73	17.2	13.8	67	5.1	11	1019.3	0	0	0	2	5	10	13
July	31.4	63	19.4	13.2	68	5.6	11	1015.7	0	0	0	3	6	11	11
August	31.4	71	16.8	11.7	73	6.7	14	1011.6	0	0	1	0	2	18	10
September	10.5	80	15.5	13.6	88	3.7	8	1020.1	0	0	5	16	3	5	1
October	19.7	66	13.4	11.1	86	6.4	13	1012.4	0	0	3	8	9	6	5
November	12.8	81	8.2	7.4	95	4.6	10	1006.7	0	2	9	6	7	2	4
December	26.5	61	4.2	2.3	88	6.5	13	1019.8	0	0	2	6	3	11	9
Year	22.1	71	11.7	8.4	81	6.0	12	1012.8	3	3	28	74	79	102	76

Summary of observations at 1500 GMT

Month	Monthly means								Visibility statistics						
	Vis	Cld	TT	Td	RH	WS	WG	pp	TF	FO	VP	PO	MO	GO	EX
January	22.5	72	7.9	4.4	79	8.2	18	1000.5	0	0	2	5	7	11	6
February	27.5	64	9.0	2.9	67	10.7	23	997.9	0	0	0	3	8	9	8
March	27.4	73	12.8	3.1	54	8.5	18	1015.0	0	0	0	5	8	8	10
April	25.2	77	14.6	6.3	60	6.9	15	1013.8	0	0	2	3	8	9	8
May	31.4	75	16.1	7.7	60	7.5	16	1014.5	0	0	2	2	3	12	12
June	41.7	71	20.3	9.7	52	7.9	14	1018.4	0	0	0	0	1	8	21
July	37.3	67	23.4	12.0	50	6.3	13	1014.5	0	0	0	0	1	14	16
August	35.5	75	19.5	10.0	56	7.6	17	1011.0	0	0	0	0	4	13	14
September	20.1	72	20.2	11.7	59	4.8	11	1018.7	0	0	0	8	8	10	4
October	26.6	76	15.7	10.5	72	6.9	16	1011.7	0	0	3	4	5	9	10
November	19.6	70	10.4	7.9	85	5.1	12	1006.2	0	1	0	10	4	12	3
December	28.6	71	7.2	3.1	75	7.4	17	1019.5	0	0	1	2	4	15	9
Year	28.6	72	14.8	7.5	64	7.3	16	1011.9	0	1	10	42	61	130	121

Legend: Vis = visibility in km. Cld = cloud amount %. TT = air temperature, deg C. Td = Dew point, deg C.
 RH = relative humidity %. WS = wind speed at 10 metres, knots. WG = Highest gust in past hour, knots.
 pp = Air pressure at MSL, mbar. TF = thick fog, <210 m. FO = fog, 210 to 900 m. VP = very poor, 1 to 4 km
 PO = poor, 4.1 to 10 km. MO = moderate, 11 to 20 km. GO = good, 21 to 40 km. EX = excellent, >40 km.

Summary of monthly climatic data.

Year 2014

Month	Max	Min	Mean	Anom	Rain	Grass	30cm	100cm	Sun	Frost	pp09	Af	Sf	Th	Ic	Rain							
	C	C	C	C	mm	min	C	C	hrs	hrs	mbar	Gf	Sl	Ha	Ic	Fg	ddd	ff	sp	hrs			
January	9.6	2.6	6.1	+1.3	153.9	0.1	6.3	7.9	89.3	27.1	1002.1	8	10	0	0	1	0	4	1	204	5.6	7.1	117.3
February	10.0	4.1	7.1	+2.2	119.8	0.7	6.1	7.2	99.7	0.0	998.3	0	14	0	0	0	2	5	0	209	7.8	9.3	81.7
March	13.6	2.6	8.1	+0.9	28.8	-1.1	7.7	8.0	154.0	31.2	1016.5	7	19	0	0	2	0	3	2	213	2.4	5.8	25.5
April	15.7	5.5	10.6	+1.4	78.5	2.0	11.4	10.3	141.0	0.3	1015.1	2	14	0	0	5	0	0	1	227	1.1	5.1	45.2
May	17.6	8.2	12.9	+0.4	64.0	6.0	14.7	13.0	173.2	2.0	1015.1	1	3	0	0	1	0	1	0	232	2.3	5.5	54.2
June	21.5	10.6	16.0	+0.5	63.9	7.4	18.4	16.1	224.9	0.0	1019.3	0	0	0	0	4	0	0	0	295	0.6	4.5	20.5
July	24.9	13.0	18.9	+1.2	28.3	9.8	20.3	17.9	250.3	0.0	1015.7	0	0	0	0	4	0	1	0	279	1.6	4.9	15.6
August	20.9	11.1	16.0	-1.5	89.1	8.0	18.8	18.1	163.3	0.0	1011.6	0	3	0	0	4	1	1	0	235	4.2	5.7	37.8
September	21.2	10.2	15.7	+1.0	10.1	6.5	17.5	16.9	120.9	0.0	1020.1	0	3	0	0	1	0	0	0	35	0.8	3.3	7.8
October	16.8	10.0	13.4	+2.2	104.6	6.7	14.7	15.3	101.5	0.0	1012.4	0	1	0	0	1	0	0	0	213	4.0	5.8	65.9
November	11.7	5.3	8.5	+1.0	102.0	2.7	11.0	12.9	58.6	23.0	1006.7	3	12	0	0	0	0	0	2	160	1.6	4.5	88.1
December	8.7	1.8	5.3	+0.3	40.4	-1.5	7.3	9.8	89.6	111.6	1019.8	12	20	0	0	0	0	0	0	243	4.8	7.1	38.9
Year	16.0	7.1	11.6	+0.9	883.4	4.0	12.9	12.8	1666.3	195.2	1012.8	33	99	0	0	23	3	15	6	221	2.7	5.7	598.5

Legend: Max/min/mean = Monthly mean of daily maximum/minimum/mean air temperature at 1.2 metres.
 Anom = Departure of mean temperature from climatic mean. Rain = monthly rainfall total.
 Grass min = Mean grass minimum temperature. 30cm/100cm = Mean earth temperature at 30 and 100 cm depth.
 Sun hrs = Hours of bright sunshine. Frost hrs = hours with air temperature below zero C. pp09 = Air pressure msl at 09 gmt.
 Days with: Af = air frost. Gf = ground frost. Sf = snow falling. Sl = snow lying. Th = thunder. Ha = hail >5mm. Ic = small hail or ice.
 Fg = Fog at 09 gmt. ddd ff = mean wind vector, degrees from true north, speed in knots. sp = mean scalar wind speed knots.
 Rain hrs = duration of measurable rain (excludes snowfall).

Appendix 5.

Wokingham annual climatic data for recent years.

Year	Mean max	Mean min	Mean Anom	Hi max	Lo min	Rain mm	Grass min	30 cm 100 cm	Sun hrs	Frost hrs	pp09	Af	Sf Gf	Th Sl	Ic Ha	Fg	ddd	ff	sp					
2003	16.1	6.3	11.2	+0.9	36.9	-6.5	534	3.2	12.0	12.3	1906	458	1017.2	58	121	10	4	8	1	4	7	219	1.3	5.2
2004	15.3	7.1	11.2	+0.9	30.7	-6.2	612	4.0	12.1	12.3	1475	280	1016.1	40	92	13	2	3	4	15	4	241	2.3	5.4
2005	15.4	6.7	11.1	+0.8	31.1	-6.9	492	3.5	12.0	12.2	1610	388	1018.0	55	115	23	4	14	2	12	10	246	1.8	5.2
2006	15.9	7.6	11.7	+1.4	35.8	-6.7	665	4.7	12.2	12.3	1648	377	1016.0	45	82	17	1	20	4	12	10	232	2.2	5.8
2007	15.6	6.9	11.2	+0.9	28.4	-7.1	745	3.8	12.3	12.7	1684	295	1017.2	41	100	9	3	13	3	5	3	248	2.3	5.7
2008	15.1	6.5	10.8	+0.5	28.7	-7.0	717	3.5	11.9	12.2	1582	304	1014.8	46	114	12	2	22	5	18	7	236	2.6	6.1
2009	15.3	6.5	10.9	+0.6	31.0	-8.6	643	3.3	11.8	11.9	1677	455	1014.2	54	101	19	17	14	0	8	7	241	0.5	5.6
2010	14.2	5.3	9.7	-0.6	30.0	-11.5	536	2.2	11.1	11.6	1557	821	1014.5	81	142	37	25	8	1	11	12	267	1.0	5.3
2011	15.9	7.0	11.5	+0.8	28.6	-5.6	589	3.9	12.3	12.6	1639	194	1016.6	36	96	5	0	10	0	3	8	229	2.7	5.8
2012	14.8	6.1	10.5	-0.2	29.6	-11.4	807	3.0	11.7	12.0	1564	475	1015.3	57	125	12	6	9	3	6	12	235	2.5	5.8
2013	14.6	6.0	10.3	-0.4	32.9	-6.8	604	2.8	11.6	11.7	1523	445	1015.6	66	133	33	11	9	0	14	7	244	1.4	6.0
2014	16.0	7.1	11.6	+0.9	29.2	-6.5	883	4.0	12.9	12.8	1666	195	1012.8	33	99	0	0	23	3	15	6	221	2.7	5.7

Legend : See appendix 4.

Wokingham area decadal annual means for the last century

Decade Ending	Mean max	Mean min	Mean Anom	Mean rain	Mean sun	Anom	Anom	Anom
1900	14.1	5.0	9.6	-1.1	600	-51	xx	
1910	13.7	5.1	9.4	-1.3	631	-20	xx	
1920	14.0	5.3	9.7	-1.0	700	+49	1588	+21
1930	14.2	5.3	9.8	-0.9	636	-15	1599	+32
1940	14.4	5.5	10.0	-0.7	641	-10	1527	-40
1950	14.6	5.7	10.2	-0.5	616	-35	1572	+5
1960	14.1	5.7	9.9	-0.8	678	+27	1500	-67
1970	13.7	5.7	9.7	-1.0	686	+35	1487	-80
1980	14.0	5.8	9.9	-0.8	655	+4	1538	-29
1990	14.4	6.1	10.3	-0.4	639	-12	1554	-13
2000	14.9	6.6	10.8	+0.1	660	+9	1569	+2
2010	15.3	6.7	11.0	+0.3	654	+3	1611	+44

Anom = difference from current 1981 to 2010 climatological average.

Temperatures in degrees C, Rainfall in mm, Sunshine in hours.

Extreme values from the Wokingham climatological series.

Highest annual mean maximum	16.1	in 2003
Lowest annual mean maximum	12.4	in 1888
Highest annual mean minimum	7.6	in 2006
Lowest annual mean minimum	3.9	in 1887
Highest annual mean temperature	11.7	in 2006
Lowest annual mean temperature	8.4	in 1887
Highest recorded temperature	36.9	on 10th August 2003
Lowest recorded temperature	-15.3	on 14th January 1982
Wettest year	952 mm	in 1903
Driest year	337 mm	in 1921
Highest daily rainfall	71.6 mm	on 20th September 1980
Sunniest year	2003	with 1906 hours
Dullest year	1958	with 1274 hours
Most days with snow falling	40	in 1917
Most days with snow lying	53	in 1963

Top ten since 1882

Warmest		Coldest		Wettest		Driest		Sunniest		Dullest		
Year	Deg C	Year	Deg C	Year	mm	Year	mm	Year	Mean	Year	Mean	
1	2006	11.7	1887	8.4	1903	952	1921	337	2003	5.2	1958	3.5
2	2014	11.6	1888	8.5	1951	887	1990	459	1990	5.1	1932	3.7
3	2011	11.5	1892	8.5	2014	883	1902	477	1989	5.1	1968	3.7
4	2002	11.4	1891	8.7	2000	872	1887	487	1911	5.1	1981	3.7
5	1999	11.3	1963	8.7	1960	857	1947	491	1949	5.0	1912	3.8
6	1990	11.3	1885	8.8	2002	853	2005	492	1929	5.0	1931	3.8
7	1989	11.3	1919	8.8	1916	842	1996	508	1921	5.0	1936	3.8
8	2007	11.2	1886	8.9	1974	837	1933	509	1959	4.9	1960	3.8
9	2004	11.2	1917	8.9	1915	815	1898	510	1933	4.9	1966	3.8
10	2003	11.2	1962	8.9	1927	814	1938	511	1995	4.8	1993	3.8

© Bernard Burton

January 2015