

WOKINGHAM METEOROLOGICAL DATA

Lat 51.425 N, Long 0.853 W, NGR (SU) 798701

Altitude 45 m ASL.

Emmbrook,

Wokingham,

Berkshire.

Annual

Summary

2020

Temperature

	°C	°F	Anom	Rank in 139 years
Mean maximum	16.4	61.5	(+1.5)	* Highest *
Mean minimum	7.1	44.8	(+0.6)	Equal 3rd highest
Daily mean	11.8	53.2	(+1.1)	* Highest *
Highest maximum	36.9	98.4		on 31st July
Lowest maximum	1.0	33.8		on 31st December
Highest minimum	19.7	67.5		on 13th August
Lowest minimum	-3.7	25.3		on 19th January
Mean grass minimum	4.3	39.7	(+0.9)	
Lowest grass minimum	-7.5	18.5		on 19th January
Mean 30cm earth temp.	12.6	54.7	(+0.8)	
Highest 30cm	22.0	71.6		on 13th August
Lowest 30cm	4.6	40.3		on 22nd January
Mean 100cm earth temp	12.5	54.5		
Highest 100cm	19.2	66.6		on 15th August
Lowest 100cm	7.2	45.0		on 26th January
Warmest month	August,		daily mean 19.5°C,	67.1°F
Coollest month	December,		daily mean 5.5°C,	41.9°F

Table 1. Temperature category for each month. (See note 2, page 4)

Category	Month
1. Very cool	-
2. Cool	-
3. Normal	Jul, Dec
4. Warm	Mar, Sep, Oct
5. Very warm	Jan, Feb, Apr, May, Jun, Aug, Nov

Table 2. Number of days with max/min air temperature in given range.

Range, deg C	Number of days		Range, deg C	Number of days	
	Max	Min		Max	Min
-15.0 to -10.1	0	0	10.0 to 14.9	116	78
-10.0 to -5.1	0	0	15.0 to 19.9	73	26
-5.0 to -0.1	0	37	20.0 to 24.9	87	0
0.0 to 4.9	7	84	25.0 to 29.9	23	0
5.0 to 9.9	51	141	30.0 to 34.9	5	0
			35.0 to 39.9	4	0

Table 3. Monthly totals of Air Frost and Ground Frost.

	Jan	Feb	Mar	Apr	May	Jun	
Air frost	5 (-5)	4 (-6)	9 (+3)	2 (-2)	2 (+1)	0 (0)	
Ground frost	14 (-3)	13 (-4)	18 (+2)	14 (0)	7 (+2)	0 (-1)	
	Jul	Aug	Sep	Oct	Nov	Dec	Annual
Air frost	0 (0)	0 (0)	0 (0)	0 (-2)	5 (-1)	10 (-1)	37 (-12)
Ground frost	0 (0)	0 (0)	0 (-2)	3 (-4)	8 (-5)	18 (+2)	95 (-13)

Date of: last spring air frost, 14th May ground frost, 16th May
 first autumn air frost, 4th November ground frost, 9th October
 Frost free period, air 173 days, (-17) ground 145 days, (+23).
 Annual total of air frost duration: 192.4 hours (-197)
 Frostiest month December. 55.6 hours

[Difference from 1981-2010 average in brackets]

Temperature anomaly in deg C

Rainfall.

Total **723.3** mm 28.48 inches (111 %) 33rd highest in 139 years

Number of : Rain days 168 (+7) Wet days 119 (+6) Days => 5mm 48 (+3)

A rain day has at least 0.2 mm

A wet day has at least 1.0 mm

Highest daily fall to 9am: 45.4 mm on 2nd October

Wettest month, October 171.2 mm 238 % of average
Driest month, May 3.4 mm 7 % of average

Duration of measurable rainfall; 563.2 hours (+45 hr) Longest in a day; 21.6 hours on 2nd October
Highest monthly duration; 102.2 hours in October Lowest ; 1.5 hours in May

Number of dry spells, (5 or more consecutive dry days): 11
Longest dry spell; 30 days, 4th May to 2nd June
Total number of : Dry days, 198 (-7) Days in dry spells, 122

Table 4. **Rainfall category for each month.**

Category	Month
1. Very wet	Feb, Oct
2. Wet	Aug, Dec
3. Normal	Jan, Mar, Apr, Jun, Nov
4. Dry	Jul, Sep
5. Very dry	May

(See note 2, page 4)

Table 4a **Rain rate, maximum daily, between given limits**

Rate mm/hr	Days	Rate mm/hr	Days
<10	114	50 to 100	8
10 to 25	32	100 to 250	3
25 to 50	17	>250	0
		Missing *	0
Highest rate	182 mm/hr on 9th February		

Table 5. **Distribution of measurable rainfall duration.**

Hours	Days	Hours	Days	Hours	Days
0	171	6.1 to 9.0	17	18.1 to 21.0	0
0.1 to 1.0	74	9.1 to 12.0	7	21.1 to 24.0	1
1.1 to 3.0	58	12.1 to 15.0	2	Missing *	0
3.1 to 6.0	34	15.1 to 18.0	2	*Not available due to snow/ice	

Table 6. **Number of days with rainfall between given limits.**

Fall, mm	Days	Fall, mm	Days
0.0 to 0.1	198	10.0 to 19.9	15
0.2 to 0.9	49	20.0 to 29.9	1
1.0 to 4.9	71	30.0 to 39.9	1
5.0 to 9.9	30	> 39.9	1

Sunshine.

(Recorded on an electronic sunshine detector)

Total **1940.3** hours Daily mean **5.3** hours (120 %)

Sunniest day 15.5 hours on the 24th June
Number of days: Nil sun 48 (-9) =>12 hrs 47 (+26)

Weather.

Number of days with:

Snow or sleet falling; 4 (-10)
Snow lying at 0900 GMT; 0 (-6)
Thunder heard; 9 (-7)
Hail; 9 (-3) =>5mm; 1 (-2) <5mm, 8 (-1)
Fog at 0900 GMT; 11 (0)

Air Pressure,

corrected to MSL.

Mean at 0900 GMT **1015.0** mbar (-1.0)
Absolute highest 1050.0 mbar on 19th January
Absolute lowest 970.7 mbar on 28th December
Span 79.3 mbar (+9.9)

[Difference from 1981-2010 average in brackets]

Wind**Table 7. Summary of monthly wind speed at 10 metres**

Month	Mean speed mph	Windiest day		Highest gust		Calm 0.5 mph or less hours
		Mean mph	Date	mph	Date/time (GMT)	
January	7.7	14.5	14th	46	13/1949	9.4
February	11.7	21.3	9th	54	9/1530	4.5
March	8.9	15.1	29th	44	29/1440	4.1
April	5.4	11.4	13th	36	20/1434	16.7
May	6.1	13.4	23rd	40	10/1606	16.3
June	6.7	13.4	29th	38	29/1336	8.1
July	7.0	15.8	5th	41	5/1150	9.7
August	6.8	15.6	21st	45	21/1248	13.5
September	6.0	11.6	25th	38	25/1342	14.2
October	7.3	11.5	30th	40	24/1423	6.7
November	6.6	14.3	2nd	43	2/0838	17.3
December	6.8	13.0	18th	50	27/0334	4.1
Year	7.3	21.3	9th February	54	9th February	124.6

Table 8. Summary of hourly mean wind direction. Number of hours with wind from given directions, in degrees from true north, summed over 30 degree segments.

	Direction											
	360 N	030 NNE	060 ENE	090 E	120 ESE	150 SSE	180 S	210 SSW	240 WSW	270 W	300 WNW	330 NNW
January	11	4	12	7	3	29	89	324	175	25	29	36
February	5	8	13	6	6	16	53	168	293	97	21	10
March	18	147	137	15	8	25	19	124	167	45	18	21
April	20	152	226	48	17	28	43	84	30	38	17	17
May	33	127	135	47	10	12	37	68	126	87	34	28
June	35	81	73	50	30	26	106	145	116	27	16	15
July	47	18	13	9	3	11	34	152	228	114	63	52
August	53	106	41	21	19	23	70	186	117	59	15	34
September	40	108	51	8	7	12	47	148	143	59	58	39
October	39	79	25	6	9	21	83	202	177	65	18	20
November	10	31	81	20	14	31	126	171	146	46	23	21
December	35	27	17	22	16	52	123	182	108	49	40	73
Year	346	888	824	259	142	286	830	1954	1826	711	352	366

Appendix 1.

Monthly statistics from the electronic sunshine detector, 2020.

Note:

Month	Total hours	Highest daily, hrs/date	Number of days with:			Hours		
			Nil	0.1 to 2.9	3.0 to 5.9	6.0 to 8.9	9.0 to 11.9	=>12.0 hrs
January	70.3	8.0 on 19th	10	9	8	4	0	0
February	86.4	7.7 on 11th	4	10	11	4	0	0
March	177.2	12.1 on 25th	2	8	8	3	7	3
April	265.5	14.0 on 26th	1	2	8	3	4	12
May	343.2	15.5 on 31st	0	1	3	5	6	16
June	199.1	15.5 on 24th	2	9	3	8	1	7
July	198.1	15.3 on 20th	1	8	8	4	4	6
August	180.7	13.1 on 20th	3	6	7	4	9	2
September	195.7	12.1 on 13th	0	5	8	7	9	1
October	82.6	6.8 on 26th	8	8	12	3	0	0
November	73.9	8.5 on 4th	6	13	6	5	0	0
December	67.6	7.6 on 1st	11	8	8	4	0	0
Year	1940.3	15.5	48	87	90	54	40	47

Appendix 2.

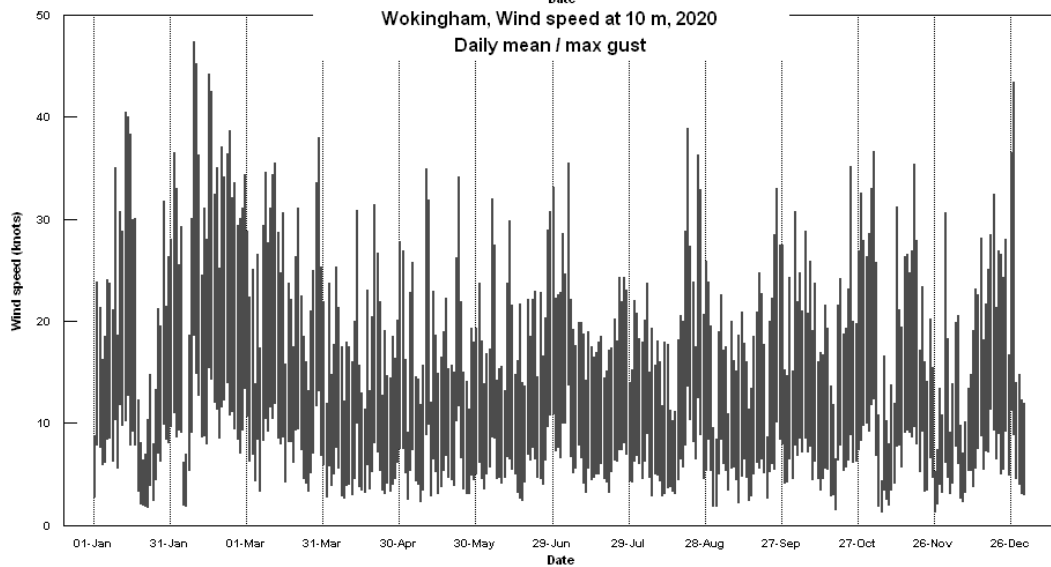
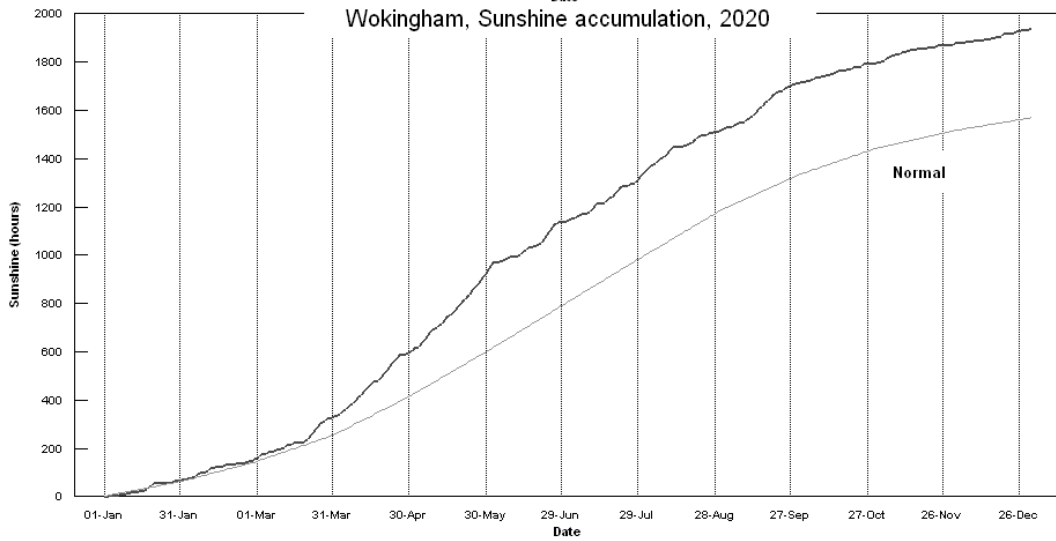
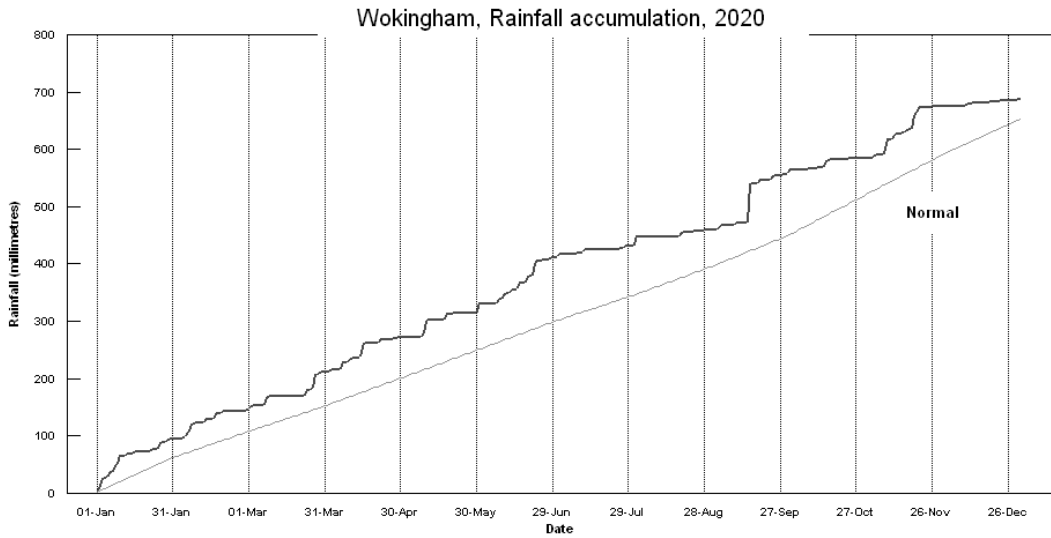
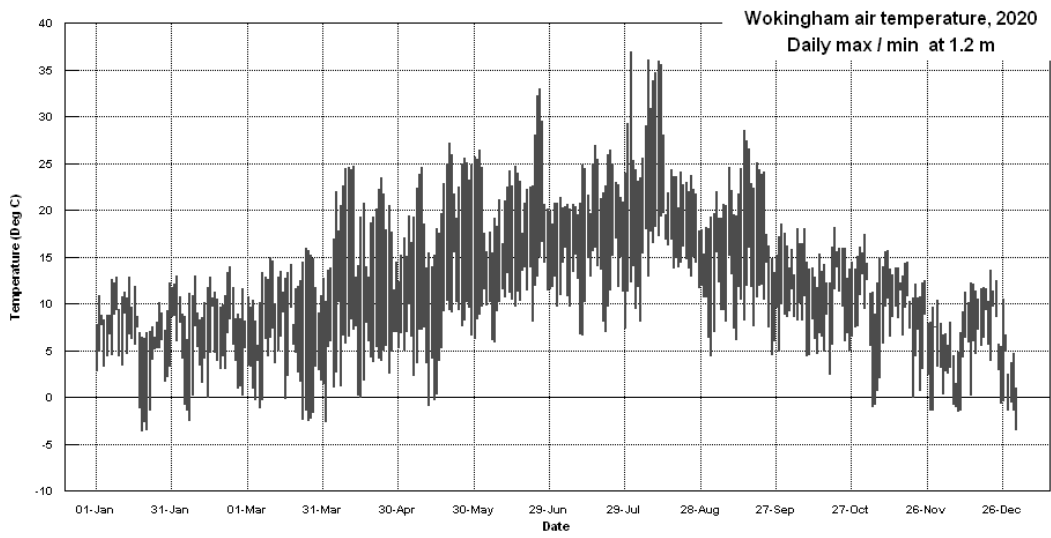
Monthly categories, quick look table, 2020.

Month	Temperature Category	Rainfall Category	Sunshine Category	Index	(see note 1)
January	5 Very mild	3 Normal	4 Sunny	12	
February	5 Very mild	1 Very wet	4 Sunny	10	
March	4 Mild	3 Normal	5 Very sunny	12	
April	5 Very mild	3 Normal	5 Very sunny	13	
May	5 Very mild	5 Very dry	5 Very sunny	15	
June	5 Very mild	3 Normal	3 Normal	11	
July	3 Normal	3 Normal	3 Normal	9	
August	5 Very mild	2 Wet	3 Normal	10	
September	4 Mild	4 Dry	5 Very sunny	13	
October	4 Mild	1 Very wet	2 Dull	7	
November	5 Very mild	3 Normal	3 Normal	11	
December	3 Normal	2 Wet	4 Sunny	9	

Note 1). Index, on scale 3 to 15 between 'worst' and 'best' months.

Note 2). Definition of categories used in Tables 1 and 4 and in Appendix 2: Category 1; the value lies within the worst 10% of ranked values for all years available. Category 2; between 10% and 30% above the worst value. Category 3; within 20% of the median value. Category 4; between 10% and 30% below the best value. Category 5; within 10% of the best value. In this context, best (worst) refer to above (below) normal temperature and sunshine, but below (above) normal rainfall. For temperature and rainfall, data since 1882 are considered, and for sunshine since 1908.

Appendix 3	Annual Summary 2020	page5
	Summary of notable features during 2020.	
January	Very mild with near average rainfall and sunshine. Mildest since 2008 and 9 th mildest in 139 years. Lowest max highest since 1916. MSL air pressure reached 1040.0 mbar on 19 th , a new all time record since before 1976.	
February	Very mild, very wet, very windy, sunshine near average. Equal mildest with 2014 since 2002 and 8 th mildest sin 139 years. Lowest max is 7 th highest in 108 years. Lowest min 9 th highest in 117 years. Mean grass min highest since 1990. Rainfall 6 th highest in 139 years. Rainfall duration most since 1995. Windiest since 1990.	
March	Mean temperature and rainfall near average, very sunny, windy at times. 12 day dry spell unbroken on 31 st . Sunniest since 2012 and before that, 2003.	
April	Very mild by day with record sun shine and plenty of dry weather.. Mean temperature 3 rd highest in 139 years with the mean maximum 4 th highest but mean minimum only 35 th highest. Mean daily temperature range highest for April in over 45 years and 2 nd highest for any month in that period. Duration of air frost about half the average. All the month's 23 dry days were in dry spells. Sunniest April in over 100 years, 102 hours above the average for the past 45 years, and the daily mean of 8.85 hours has only been exceeded 23 times for any month in the past 112 years. Mean wind speed equal lowest for April with 2007 and 1997 since before 1988.	
May	A record breaking May , highest mean maximum, highest sunshine and lowest rainfall. The mean maximum of 20.8° is highest in 139 years, but the mean minimum ranks only 59 th highest. The resulting daily mean temperature range is 0.8° higher than for any other May in the past 45 years. Highest min is 3 rd highest in 108 years. Driest May in 139 years with only 3.4 mm of rain, just 7% of average. The 29 dry days is a new record. Sunniest May since before 1908, and 2 nd sunniest month of any name after July 1911. Mean RH 2 nd lowest for any month in past 23 years.	
June	Very warm with rainfall above and sunshine near average. Highest max 4 th highest in 117 years. Rainfall returned to near normal after a 30 day dry spell ended on the 2 nd . Daily mean sunshine 4.43 hours less than in May, and 2.21 hours less than in April.	
July	Dry with temperature and sunshine near average but with extreme heat on 31 st . Highest max 36.9° on 31 st , but also equals the all time highest for Wokingham. Only the 12 th July since 1908 to not have any thunder. Mean wind speed on 5 th highest for a July day since before 1988.	
August	Very warm with a notable heatwave. Rainfall above and sunshine below average. Temperature exceeded 30° on 6 consecutive days to the 12 th , and exceeded 35° on 3 of them. Mean min 2 nd highest after 1997 in 139 years. Highest max 36.1° 2 nd highest for August since before 1904, and 3 rd highest temperature for any day in that period. The highest min, 19.7° is a new record for the month. Mean grass min highest since 1997. Due to several days with thunderstorms that just missed Wokingham, our rainfall total was low compared with surrounding stations. 45 mph gust on 21 st highest for August since 1992.	
September	Dry with mean temperature and sunshine well above average. Rainfall about half the average with a 17 day dry spell ending on the 21 st . A sunny September but only 3 rd sunniest this millennium.	
October	Dull and very wet with near average temperature. 4 th wettest October in 139 years, and wettest since 1960. 2 day rainfall total of 85.2 mm on 2 nd /3 rd is highest for any time since before 1976, 8 fewer dry days than average. Dullest October since 1991.	
November	Very mild with below average rainfall and sunshine. Mean temperature 8 th highest in 139 years. The lowest max is 7 th highest in 108 years. MSL pressure reached 1041.0 mbar on 5 th , the highest for November since 2001.	
December	Wet with above average temperature and average sunshine. Mean max lowest since 2010. Number of wet days 6 above average and equal 2 nd highest since 1999. Lowest pressure equal lowest for December since 1989.	
Year	<p>Another record breaking year, with both mean temperature and sunshine topping the long-term lists. Temperature: Both the mean maximum and daily mean (11.8°)are new records for this station. It is notable that the top 8 mean temperatures have all occurred since 1999. Note too that the 139 year median annual temperature is just 10.1°. While some of this increase can be ascribed to the changing global climate, local urban encroachment will undoubtedly be having an impact on our local climate. This year's highest maximum of 36.9° equals the local record set in 2003. The lowest maximum is 1.3° above the median while the highest minimum is 2.5° above its median and is equal highest with 1949 in 108 years, also the lowest min is 4.1° above the 117 year median and 0.3° higher then in any previous year. The mean grass min is highest since 2002 but the lowest grass min is a new record, 5.4° above the 41 year average, and 2.2° higher than the previous highest in 1998. Mean earth temperatures at both 30 cm and 1 m depth are above average, but neither have broken records. The number of days with air frost is lowest since 2014, and the duration of air frost is 52% of average, a deficit of 117 hours. The number of days with ground frost is lowest since 2006. Rainfall: This year's total puts it into the wet category, ranking 33rd highest in 139 years, and is 81 mm above the median. The total was boosted by 2 very wet months, February with 231% of average, and October with 238%, and a wet August with 146%. Conversely, the year's total could have been much higher had there been even an average fall in May, which had rain on only 2 days, one of which had only 0.2 mm, and a total just 7% of average. In fact, it was notably dry between mid March and the start of June, with 68 dry days in the 77 day period. Also of note was the record two day total on 2nd/3rd October when 85.2 mm fell. Estimated soil moisture deficit peaked at 303 mm in late September, 45 year median 190 mm, but was lower than in 2018 and 2003, and had not returned to field capacity by 31st December. Shallow rooted unirrigated plants suffered severe stress between 20th May and 23rd August. The frequency of thunder is below average, August having the most with 5 days. Large hail is also below average but small hail is about average. Snow was well below average, seen on just 4 days, and there were no days with lying snow. Rainfall rate exceeded the violent category (50 mm/hr) on 11 days, the maximum rate was 182 mm/hr on the 9th February. Sunshine: This has been the sunniest year on record with a daily mean of 5.30 hours. Although sunshine data back to 1908 is available for this area, a change to an electric sunshine recorder in 1999 probably accounts for some increase in recent sunshine figures. Nevertheless, 2020 is the sunniest year in this millennium, with 2018 and 2003 making up the top 3. March, April and May were outstandingly sunny, with 145%, 161% and 184 % of average respectively, April and May were both sunnier than any other month this year, and May's daily mean of 11.07 hrs is a record for the month. December was the least sunny month, daily mean 2.18 hours. The 48 days with nil sun is 8 fewer than average, but is higher than last year's 41. Wind: The mean speed this year is 0.5 mph above average and equal highest with 2015 since 1994. The mean on the windiest day, 21.3 mph, is highest since 1990. The duration of calm is 13.0 hours below average. SW winds were 8.1% more frequent, at the expense of E, down 3.7%, and W&NW combined, down 5.7%. Pressure: A new record was set on January 19th when the MSL pressure reached 1050.0 mbar, the highest value since before 1976. Humidity: The mean relative humidity was 77.9%, anomaly -1.0 %.</p> <p style="text-align: center;">B.J.Burton. F.R.Met.S. 5th January 2021</p>	



Appendix 4.

Summary of observations at 0900 GMT

Month	Monthly means								Visibility statistics						
	Vis	Cld	TT	Td	RH	WS	WG	pp	TF	FO	VP	PO	MO	GO	EX
January	18.6	77	6.0	4.5	90	6.0	12	1020.4	0	1	4	8	9	6	3
February	20.4	75	6.7	4.2	85	9.9	19	1010.4	2	1	3	4	7	9	3
March	20.2	58	7.5	3.2	75	8.7	17	1017.3	0	0	2	7	9	12	1
April	19.4	55	11.7	6.0	69	5.3	12	1018.1	0	0	1	8	10	9	2
May	40.0	52	15.6	7.3	58	6.2	13	1022.2	0	0	0	2	2	16	11
June	36.5	70	17.5	10.6	65	6.5	14	1012.8	0	0	0	3	3	15	9
July	44.8	65	18.3	11.0	64	7.1	14	1017.1	0	0	1	1	1	11	17
August	31.8	66	19.3	13.8	72	6.6	14	1012.8	0	0	2	9	2	6	12
September	31.5	62	15.3	11.2	77	5.7	12	1017.8	0	0	0	4	7	14	5
October	20.8	75	11.4	9.4	88	6.8	14	1008.1	0	0	4	6	8	12	1
November	13.7	77	8.4	7.2	92	6.1	13	1019.6	2	2	7	7	7	3	2
December	16.6	78	5.0	3.7	91	5.6	12	1003.4	2	1	4	10	4	8	2
Year	26.2	67	11.9	7.7	77	6.7	14	1015.0	6	5	28	69	69	121	68

Summary of observations at 1500 GMT

Month	Monthly means								Visibility statistics						
	Vis	Cld	TT	Td	RH	WS	WG	pp	TF	FO	VP	PO	MO	GO	EX
January	23.4	77	8.4	5.2	81	7.4	16	1019.1	0	0	5	8	5	8	5
February	26.4	77	9.1	4.2	72	11.6	25	1009.9	0	0	1	6	6	11	5
March	32.8	66	10.9	2.1	57	9.8	21	1016.5	0	0	2	2	7	10	10
April	27.7	51	17.2	4.9	47	6.3	15	1015.9	0	0	0	6	6	12	6
May	48.7	51	19.7	5.1	40	7.5	17	1021.1	0	0	0	1	1	7	22
June	33.9	70	20.2	10.4	56	8.1	17	1011.9	0	0	1	2	6	15	6
July	44.1	70	21.4	10.5	53	8.3	18	1016.2	0	0	0	2	5	7	17
August	37.4	73	23.1	12.7	55	7.6	16	1011.8	0	0	0	4	7	7	13
September	41.9	58	19.9	10.6	57	7.4	17	1016.2	0	0	1	1	4	9	15
October	27.4	80	13.1	9.0	77	7.5	18	1007.6	0	0	3	4	8	9	7
November	26.1	71	10.9	7.5	81	6.6	14	1019.1	0	0	4	6	3	11	6
December	23.3	77	7.0	4.4	84	6.4	14	1002.7	0	1	1	9	9	6	5
Year	32.8	69	15.1	7.2	63	7.9	17	1014.0	0	1	18	51	67	112	117

Legend: Vis = visibility in km. Cld = cloud amount %. TT = air temperature, deg C. Td = Dew point, deg C.
 RH = relative humidity %. WS = wind speed at 10 metres, knots. WG = Highest gust in past hour, knots.
 pp = Air pressure at MSL, mbar. TF = thick fog, <210 m. FO = fog, 210 to 900 m. VP = very poor, 1 to 4 km
 PO = poor, 4.1 to 10 km. MO = moderate, 11 to 20 km. GO = good, 21 to 40 km. EX = excellent, >40 km.

Summary of monthly climatic data.

Year 2020

Month	Max	Min	Mean	Anom	Rain	Grass	30cm	100cm	Sun	Frost	pp09	Af	Sf	Th	Ic	Rain							
	C	C	C	C	mm	min	C	C	hrs	hrs	mbar	Gf	Sl	Ha	Ic	Fg	ddd	ff	sp	hrs			
January	9.4	4.1	6.8	+2.0	61.6	1.1	6.9	8.0	70.3	49.2	1020.4	5	14	0	0	0	0	1	214	5.5	6.7	55.6	
February	10.4	3.8	7.1	+2.2	99.3	1.3	6.9	7.6	86.4	24.6	1010.4	4	13	1	0	0	0	4	3	229	8.8	10.2	83.4
March	12.1	2.7	7.1	+0.2	41.8	-0.4	7.7	8.0	177.2	36.5	1017.3	9	18	2	0	0	0	2	0	256	1.1	7.7	57.4
April	18.3	4.6	11.5	+2.3	39.6	0.8	11.1	10.1	265.5	7.4	1018.1	2	14	0	0	0	1	0	62	1.6	4.7	31.7	
May	20.8	6.7	13.7	+1.2	3.4	2.9	14.4	13.0	343.2	3.3	1022.2	2	7	0	0	1	1	0	0	325	0.7	5.3	1.5
June	22.1	11.2	16.6	+1.1	55.7	8.7	17.4	15.7	199.1	0.0	1012.8	0	0	0	0	3	0	0	0	210	2.0	5.8	34.3
July	23.1	12.0	17.5	-0.2	26.5	9.6	18.3	17.1	198.1	0.0	1017.1	0	0	0	0	0	0	0	0	243	4.4	6.1	33.8
August	24.7	14.3	19.5	+2.0	73.7	12.1	19.7	18.4	180.7	0.0	1012.8	0	0	0	0	5	0	0	0	229	2.6	5.9	38.7
September	20.9	9.8	15.4	+0.7	26.1	7.0	16.9	17.0	195.7	0.0	1017.8	0	0	0	0	0	0	0	0	262	1.9	5.2	15.9
October	14.9	8.0	11.4	+0.2	171.2	5.4	13.1	14.3	82.6	0.0	1008.1	0	3	0	0	0	0	1	0	223	3.5	6.3	102.2
November	12.2	5.6	8.9	+1.4	47.1	3.2	10.6	11.8	73.9	15.8	1019.6	5	8	0	0	0	0	0	4	211	3.9	5.7	37.9
December	8.2	2.9	5.5	+0.5	77.3	0.1	7.8	9.3	67.6	55.6	1003.4	10	18	1	0	0	0	3	211	3.2	5.9	70.1	
Year	16.4	7.1	11.8	+1.1	723.3	4.3	12.6	12.5	1940.3	192.4	1015.0	37	95	4	0	9	1	8	11	226	2.8	6.3	563.2

Legend: Max/min/mean = Monthly mean of daily maximum/minimum/mean air temperature at 1.2 metres.
 Anom = Departure of mean temperature from climatic mean. Rain = monthly rainfall total.
 Grass min = Mean grass minimum temperature. 30cm/100cm = Mean earth temperature at 30 and 100 cm depth.
 Sun hrs = Hours of bright sunshine. Frost hrs = hours with air temperature below zero C. pp09 = Air pressure msl at 09 gmt.
 Days with: Af = air frost. Gf = ground frost. Sf = snow falling. Sl = snow lying. Th = thunder. Ha = hail >5mm. Ic = small hail or ice.
 Fg = Fog at 09 gmt. ddd ff = mean wind vector, degrees from true north, speed in knots. sp = mean scalar wind speed knots.
 Rain hrs = duration of measurable rain (excludes snowfall).

Appendix 5.

Wokingham annual climatic data for recent years.

Year	Mean max	Mean min	Mean	Anom	Hi max	Lo min	Rain mm	Grass min	30 cm	100 cm	Sun hrs	Frost hrs	pp09	Af	Sf Gf	Th Sl	Ic Ha	Fg	ddd	ff	sp			
2009	15.3	6.5	10.9	+0.6	31.0	-8.6	643	3.3	11.8	11.9	1677	455	1014.2	54	101	17	14	0	8	7	241	0.5	5.6	
2010	14.2	5.3	9.7	-0.6	30.0	-11.5	536	2.2	11.1	11.6	1557	821	1014.5	81	142	37	25	8	1	11	12	267	1.0	5.3
2011	15.9	7.0	11.5	+0.8	28.6	-5.6	589	3.9	12.3	12.6	1639	194	1016.6	36	96	5	0	10	0	3	8	229	2.7	5.8
2012	14.8	6.1	10.5	-0.2	29.6	-11.4	807	3.0	11.7	12.0	1564	475	1015.3	57	125	12	6	9	3	6	12	235	2.5	5.8
2013	14.6	6.0	10.3	-0.4	32.9	-6.8	604	2.8	11.6	11.7	1523	445	1015.6	66	133	33	11	9	0	14	7	244	1.4	6.0
2014	16.0	7.1	11.6	+0.9	29.2	-6.5	883	4.0	12.9	12.8	1666	195	1012.8	33	99	0	0	23	3	15	6	221	2.7	5.7
2015	15.5	6.7	11.1	+0.4	33.9	-7.2	547	3.5	12.3	12.2	1598	202	1017.4	38	107	12	2	6	3	8	4	230	3.2	6.3
2016	15.4	6.6	11.0	+0.3	33.0	-6.4	688	3.2	12.4	12.6	1552	351	1016.2	52	127	4	0	14	5	12	13	231	2.2	5.6
2017	15.6	7.1	11.4	+0.7	33.4	-6.7	642	3.9	12.5	12.5	1587	331	1016.9	45	108	13	1	9	1	6	6	232	3.1	5.8
2018	16.3	6.9	11.6	+0.9	34.1	-8.3	606	3.5	12.5	12.5	1916	322	1015.4	40	106	15	6	9	0	10	2	225	1.6	5.8
2019	15.9	6.6	11.2	+0.5	36.8	-6.5	783	3.3	12.2	12.3	1792	248	1014.6	43	128	6	4	10	2	11	7	226	2.6	5.6
2020	16.4	7.1	11.8	+1.1	36.9	-3.7	723	4.3	12.6	12.5	1940	192	1015.0	37	95	4	0	9	1	8	11	226	2.8	6.3

Legend : See appendix 4.

Note: Anom is difference from the current 30 year average, up to 2010, this is 1971 to 2000, after 2010, 1981 to 2010

Wokingham area decadal annual means for the last century See note1 below

Decade Ending	Mean max	Mean min	Mean	Anom	Mean rain	Anom	Mean sun	Anom
1900	14.0	5.3	9.7	-1.0	600	-51	xx	
1910	13.7	5.4	9.5	-1.2	631	-20	xx	
1920	14.0	5.6	9.8	-0.9	700	+49	1588	-23
1930	14.2	5.4	9.8	-0.9	636	-15	1599	-12
1940	14.4	5.7	10.0	-0.7	641	-10	1527	-84
1950	14.6	5.8	10.2	-0.5	616	-35	1572	-39
1960	14.1	5.8	10.0	-0.7	678	+27	1500	-111
1970	13.8	5.8	9.8	-0.9	686	+35	1487	-124
1980	14.1	5.8	9.9	-0.8	655	+4	1538	-73
1990	14.4	6.1	10.3	-0.4	639	-12	1554	-57
2000	14.9	6.6	10.8	+0.1	660	+9	1569	-42
2010	15.3	6.7	11.0	+0.3	654	+3	1611	0
2020	15.6	6.7	11.2	+0.5	682	+31	1678	+67

Extreme values from the Wokingham climatological series.

Highest annual mean maximum	16.4	in 2020
Lowest annual mean maximum	12.4	in 1888
Highest annual mean minimum	7.6	in 2006
Lowest annual mean minimum	3.9	in 1887
Highest annual mean temperature	11.8	in 2020
Lowest annual mean temperature	8.4	in 1887
Highest recorded temperature	36.9	on 10th Aug 2003 & 31st Jul 2020
Lowest recorded temperature	-15.3	on 14th January 1982
Wettest year	952 mm	in 1903
Driest year	337 mm	in 1921
Highest daily rainfall	71.6 mm	on 20th September 1980
Sunniest year	2020	with 1940 hours
Dullest year	1958	with 1274 hours
Most days with snow falling	40	in 1917
Most days with snow lying	53	in 1963

Anom = difference from current 1981 to 2010 climatological average.

Temperatures in degrees C, Rainfall in mm, Sunshine in hours.

Sunshine recorder changed in 1999

Top ten since 1882

Warmest		Coldest		Wettest		Driest		Sunniest		Dullest		
Year	Deg C	Year	Deg C	Year	mm	Year	mm	Year	Mean	Year	Mean	
1	2020	11.8	1892	8.5	1903	952	1921	337	2020	5.3	1958	3.5
2	2006	11.7	1888	8.7	1951	887	1990	459	2018	5.2	1932	3.7
3	2018	11.6	1887	8.7	2014	883	1902	477	2003	5.2	1968	3.7
4	2014	11.6	1891	8.7	2000	872	1887	487	1990	5.1	1981	3.7
5	2011	11.5	1963	8.8	1960	857	1947	491	1989	5.1	1912	3.8
6	2017	11.4	1919	8.9	2002	853	2005	492	1911	5.1	1931	3.8
7	2002	11.4	1962	8.9	1916	842	1996	508	1949	5.0	1936	3.8
8	1999	11.3	1917	9.0	1974	837	1933	509	1929	5.0	1960	3.8
9	1990	11.3	1890	9.0	1915	815	1898	510	1921	5.0	1966	3.8
10	1989	11.3	1922	9.1	1927	814	1938	511	1959	4.9	1993	3.8

Note1. Decadal means for the past century. The original data prior to 1970 have been updated, resulting in some slight changes in the decadal temperature means from data published in Annual Summaries up to and including 2014.

© Bernard Burton

January 2021